



# **Trial Version Installation Guide**

Copyright © 2016 4C Systems LLC. All Rights Reserved

Updated: 17<sup>th</sup> Mar 2016

---

# Contents

- 1. INSTALLATION FILES ..... 3
- 2. SERVER INSTALLATION ..... 3
- 3. 4CSQL TRIAL CLIENT APPLICATION INSTALLATION..... 3

## 1. Installation Files

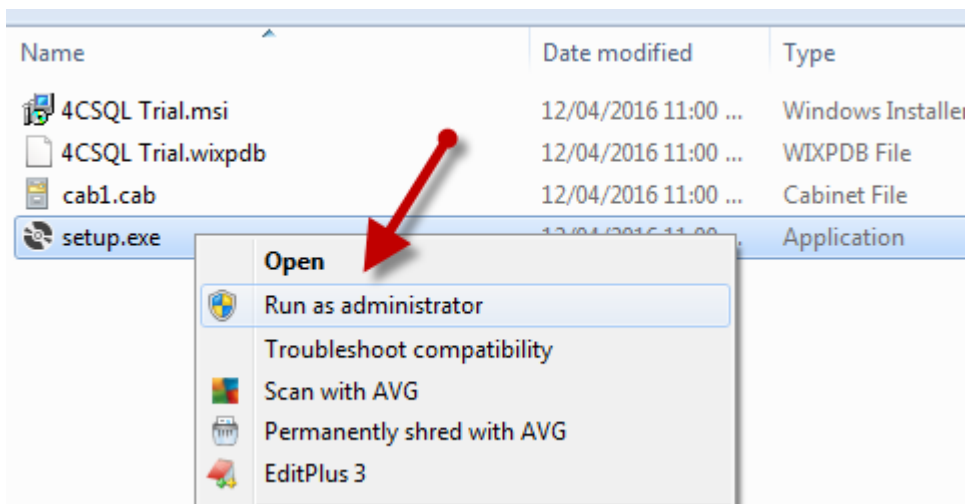
1. The following folders are included in the package;
  - a. 4CSQLTrial– this folder contains the 4CSQL Trial CMMS application installation files which will be used to install the application on client machines.
  - b. 4CSQL-ServerDB – this folder contains the a blank back-up copy of the 4CSQL SQL Server trial database which will need to be restored on your instance of SQL Server.

## 2. Server Installation

1. 4CSQL-ServerDB folder;
  - a. This folder contains the backup copy of the 4CSQL database (SQL Server 2005 format) which you can restore manually using SQL Server Management Studio on the server.
  - b. Please follow link below for guidance to restore the database (if required);  
<https://msdn.microsoft.com/en-us/library/ms177429.aspx>

## 3. 4CSQL Trial Client Application Installation

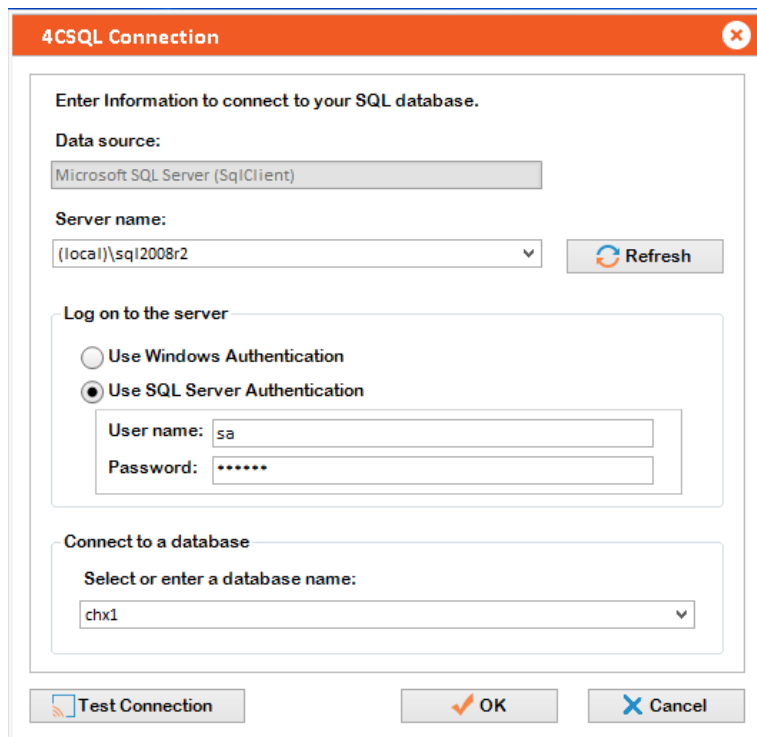
1. Open the 4CSQLTrial folder.
2. Run setup.exe file using the “Run as administrator” option as in the screenshot below to install the 4CSQL client application.



3. To launch the application, double click on the 4CSQL Trial Shortcut icon on the desktop.



4. When the application is launched for the first time, you will be requested to enter connection details to the SQL Server database in the screen below;



**4C SQL Connection**

Enter Information to connect to your SQL database.

**Data source:**  
Microsoft SQL Server (SqlClient)

**Server name:**  
(local)\sql2008r2 Refresh

**Log on to the server**

☐ Use Windows Authentication  
☒ Use SQL Server Authentication

User name: sa  
Password: \*\*\*\*\*

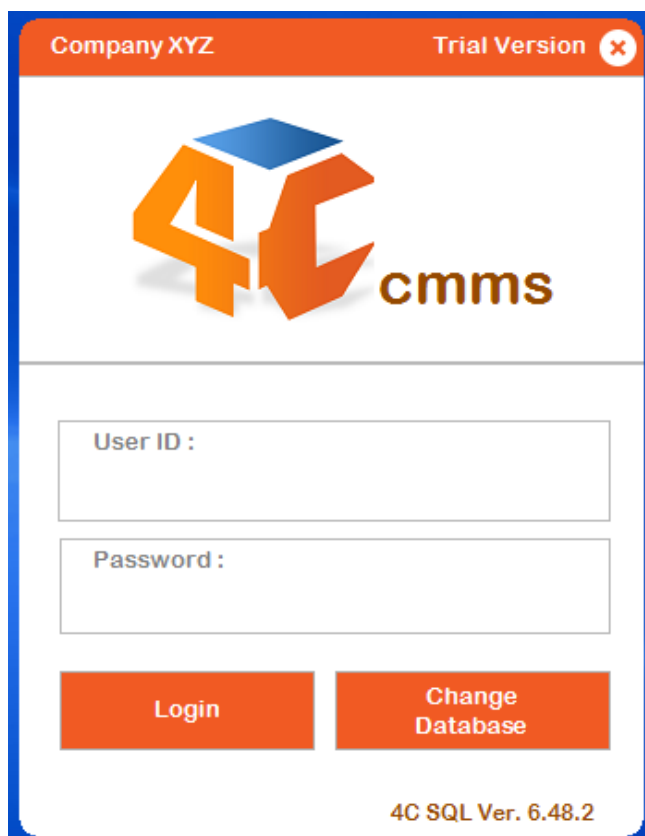
**Connect to a database**  
Select or enter a database name:  
chx1

Test Connection OK Cancel

5. Enter the Server name, connection method and database name. Click Ok to save the connection.
6. The login screen will now open as below. From the login screen the connection to the database can be changed by clicking the “Change Database” button. The default login userid and password is as below;

UserID = admin

Password = admin



**Company XYZ** Trial Version

**4C cmms**

User ID :

Password :

Login Change Database

4C SQL Ver. 6.48.2

7. The number of logins remaining is visible in Transactions ribbon – right hand corner next to the Exit button.

