

# CE Clock™ Help

**Parameter**

**Installation**

**Preface**

**Date & Time**

**Timer**

**Alarm**

**Invisible Mode**

**Shortcut Key**

**Security**

**Quality**

**FAQ**

**Terms of Use**

**Contact Us**

**Epilogue**

## Word Explanation

**CE:** Casual Engine

**Microsoft .NET Framework:** It is the platform for new kind of software to run on. It is the heart of Windows operating system.

# Parameter

**Fee:** 0.00 US dollar. This software is totally free for enterprises and individuals. Besides, it is free for governments, charities, hospitals, universities and other organizations. Vitally, you can also directly copy and include it in your commercial products and services for free. You just need to provide a link to this Website. The URL is:

**<http://www.casualengine.com/>**

**Version:** 2.0

**Operating System:** It does not support Linux. It supports:

Windows 7/Vista/XP/2000/98. Vitally, it supports Windows Server 2008/2003/2000 and their R2 editions. Besides, it supports virtualization environment.

**CPU:** 400MHz. You can definitely run this software if your computer can start.

**RAM:** 10MB.

**Hard Disk:** 24KB. It is as small as a .txt file. You do not have to worry about the hard disk.

## About Second Version

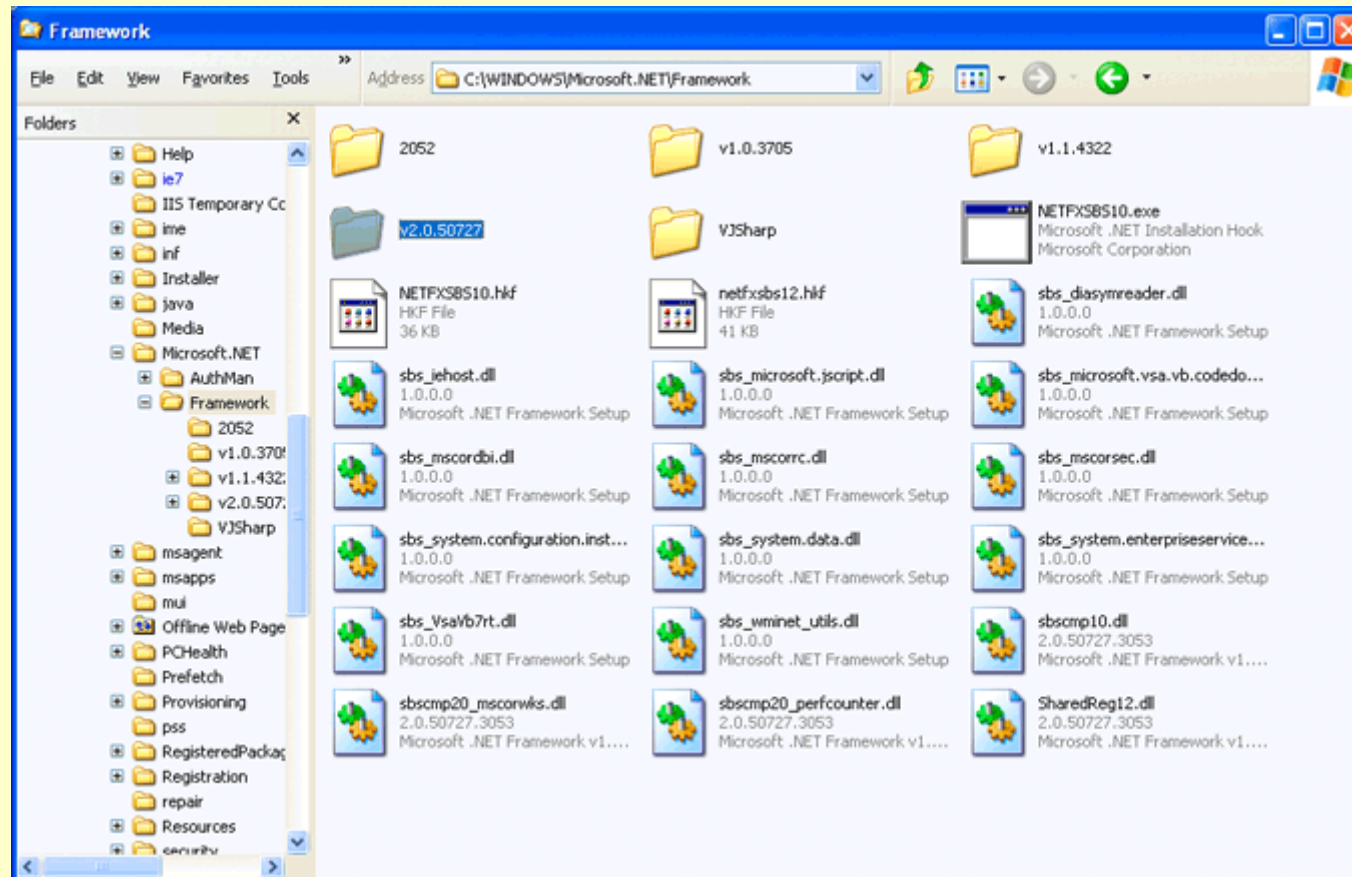
The second version improves the timer, clocks and alarms. The title bar can display the start time and stop time of the timer. Meanwhile, it can remain the last record. Vitally, to promote convenience, the clocks and alarms no longer use ":". Instead, they use ".".

Besides, the interface is improved. Its size is smaller, so that you can open more windows at the same time on the screen.

Finally, it adds shortcut keys. You can press **<Ctrl+~>** key to control the timer, and press **<Ctrl+M>** key to minimize the window.

# Installation

Notice that this software requires *Microsoft .NET Framework 2.0* and SP2. You have to install them first.



To see whether your computer has already installed this platform. You can check your computer.

**C:\WINDOWS\Microsoft.NET\Framework**

You can see the folder: **v2.0.50727**. If you cannot find it, you have to go to Microsoft Download Center to download and install them.

Click Here to Install Silverlight United States Change All Microsoft Sites

Microsoft Submit

Download Center

Download Center Home Search All Downloads Go Advanced Search

**Product Families**

- Windows
- Office
- Servers
- Business Solutions
- Developer Tools
- Windows Live
- MSN
- Games & Xbox
- Windows Mobile
- All Downloads

**Download Categories**

- Games
- DirectX
- Internet
- Windows Security & Updates
- Windows Media
- Drivers
- Home & Office
- Mobile Devices
- Mac & Other Platforms
- System Tools
- Development Resources

**Download Resources**

- Microsoft Update Services
- Download Center FAQ
- Related Sites

**Download Notifications**

- Notifications Signup

**Worldwide Downloads**

- Countries & Regions

## Microsoft .NET Framework Version 2.0 Redistributable Package (x86)

**Brief Description**

The Microsoft .NET Framework version 2.0 (x86) redistributable package installs the .NET Framework runtime and associated files required to run applications developed to target the .NET Framework v2.0.

**On This Page**

- [Quick Details](#)
- [System Requirements](#)
- [Additional Information](#)
- [What Others Are Downloading](#)
- [Overview](#)
- [Instructions](#)
- [Related Resources](#)
- [Related Downloads](#)

**Download**

**Quick Details**

File Name:	dotnetfx.exe
Version:	2.0
Date Published:	1/22/2006
Language:	English
Download Size:	22.4 MB
Estimated Download Time:	Download (56K) 55 min
Change Language:	English Change

**Overview**

The Microsoft .NET Framework version 2.0 redistributable package installs the .NET Framework runtime and associated files required to run applications developed to target the .NET Framework v2.0.

The .NET Framework version 2.0 improves scalability and performance of applications with improved caching, application deployment and updating with ClickOnce, support for the broadest array of browsers and devices with ASP.NET 2.0 controls and services. For more information on the .NET Framework 2.0, click [here](#).

[↑ Top of page](#)

Please download *Microsoft .NET Framework Version 2.0 Redistributable Package*. This image shows its 32 bit edition. You should download its 64 bit edition if your computer is 64 bit. This is the platform for new kind of software to run on. The URL is:

**<http://www.microsoft.com/downloads/details.aspx?FamilyID=0856each-4362-4b0d-8edd-aab15c5e04f5&DisplayLang=en>**

Click Here to Install Silverlight United States Change All Microsoft Sites

Microsoft Submit

Download Center

Download Center Home Search All Downloads Go Advanced Search

**Product Families**

- Windows
- Office
- Servers
- Business Solutions
- Developer Tools
- Windows Live
- MSN
- Games & Xbox
- Windows Mobile
- All Downloads

**Download Categories**

- Games
- DirectX
- Internet
- Windows Security & Updates
- Windows Media
- Drivers
- Home & Office
- Mobile Devices
- Mac & Other Platforms
- System Tools
- Development Resources

**Download Resources**

- Microsoft Update Services
- Download Center FAQ
- Related Sites

**Download Notifications**

- Notifications Signup

**Worldwide Downloads**

- Countries & Regions

## Microsoft .NET Framework 2.0 Service Pack 2

**Brief Description**  
Service Pack 2 for .NET Framework 2.0

**On This Page**

- [Quick Details](#)
- [System Requirements](#)
- [Related Resources](#)
- [Overview](#)
- [Instructions](#)
- [What Others Are Downloading](#)

Download files below

**Quick Details**

Version:	SP2
Date Published:	1/16/2009
Language:	English
Download Size:	23.8 MB - 122.3 MB*

\*Download size depends on selected download components.

**Change Language:** English Change

**Overview**

The .NET Framework 2.0 Service Pack 2 provides cumulative roll-up updates for customer reported issues found after the release of the .NET Framework 2.0. In addition, this release provides performance improvements, and prerequisite feature support for the .NET Framework 3.5 Service Pack 1.

Please review the supported operating systems for this deployment package in the System Requirements section. The corresponding updates for Windows Vista and Microsoft Windows 2008 are deployed via the full .NET Framework 3.5 service pack 1.

[Top of page](#)

**System Requirements**

- Supported Operating Systems:** Windows Server 2003; Windows XP
- Processor:** 400 MHz Pentium processor or equivalent (Minimum); 1GHz Pentium processor or equivalent (Recommended)
- RAM:** 96 MB (Minimum); 256 MB (Recommended)

Then, you have to download its SP2: *Microsoft .NET Framework 2.0 Service Pack 2*. The URL is:  
**<http://www.microsoft.com/downloads/details.aspx?FamilyID=5b2c0358-915b-4eb5-9b1d-10e506da9d0f&DisplayLang=en>**

**Tip:** Microsoft .NET Framework 2.0 and SP2 are extremely important for new kind of software. CE



strongly recommends you to save them on your flash drive and portable hard disk, so that you do not have to access the Internet and download them every time, if you use other computers. Many computers have not yet installed them by default.



After installation of the *Microsoft .NET Framework 2.0 SP2* platform, you can unpack the .zip file and open the folder. It has two editions: *USB* and *Installation*.

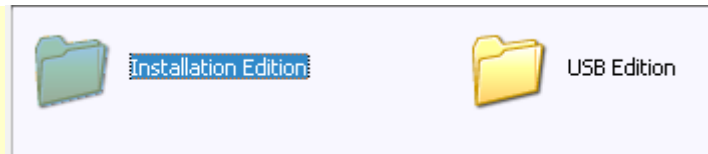
The USB edition does not require installation at all. You can simply double-click **CE Clock.exe** to run this software. It does not write data into *Windows Registry* or hard disk at all. It just runs on the memory temporarily. Besides, after closing the software, it will be totally removed from your computer.



It supports 32 and 64 bit systems at the same time.

It does not contain icons. Therefore, it uses the default icon of Windows operating system. Indeed, it looks ugly. You should complain about Microsoft Corporation. Note that it is not virus. You should not mistake it later. You should save it your flash drive or portable hard disk.

The USB edition is quite useful if you use other people's computers. It is impolite to install software in computers of your friends. Similar, you may not be allowed to install any software in office or other public situations, because these computers have been locked. You can still use this software if you use the USB edition. Definitely, to use this software, you have to persuade the owners to install the .NET Framework 2.0 SP2 platform first.



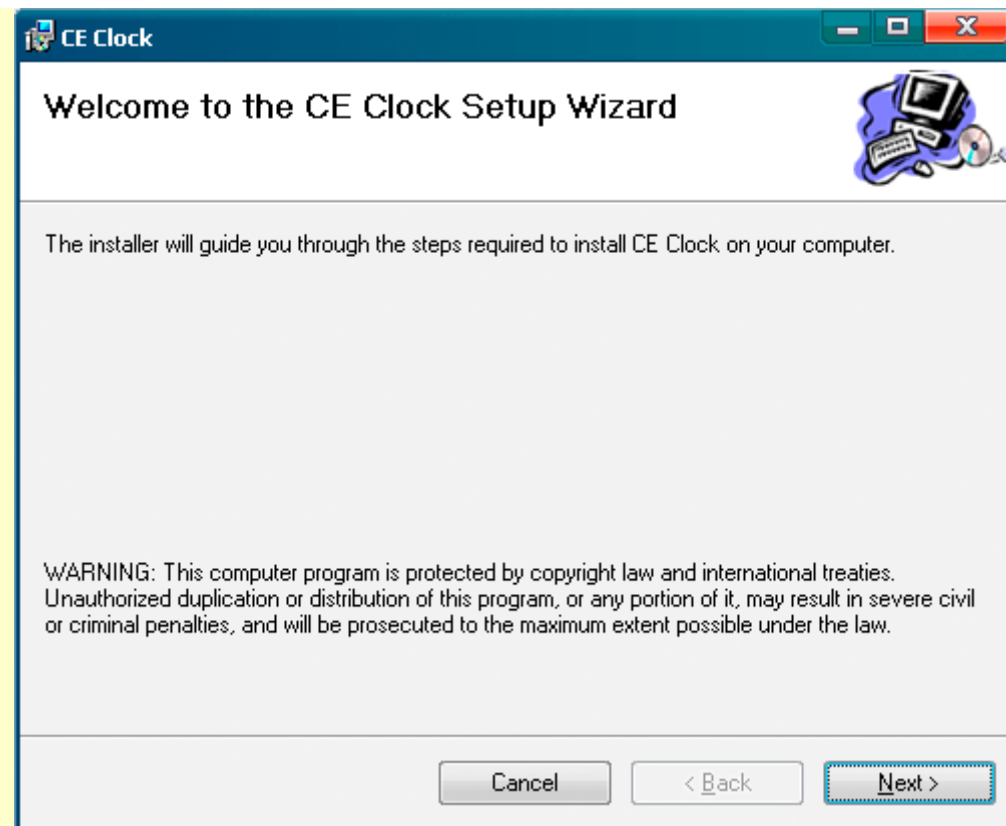
Definitely, you can install the software directly if you are using your own computer.



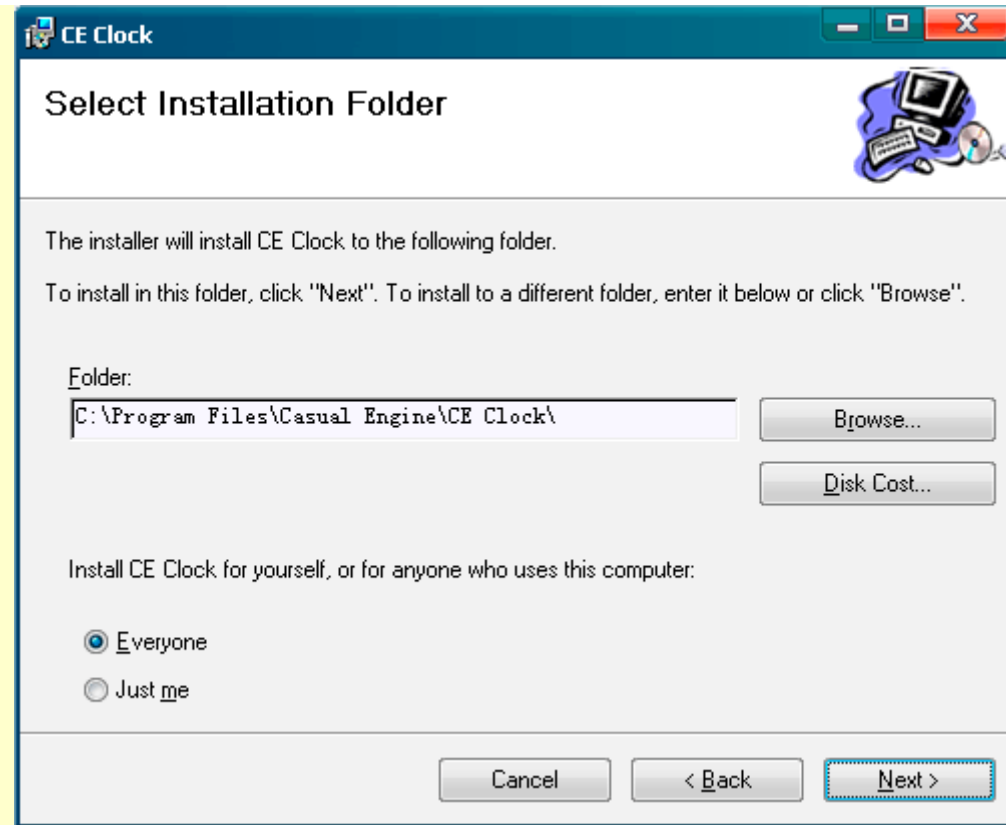
Then, you have to choose the system first. x86 means 32 bit while x64 means 64 bit.



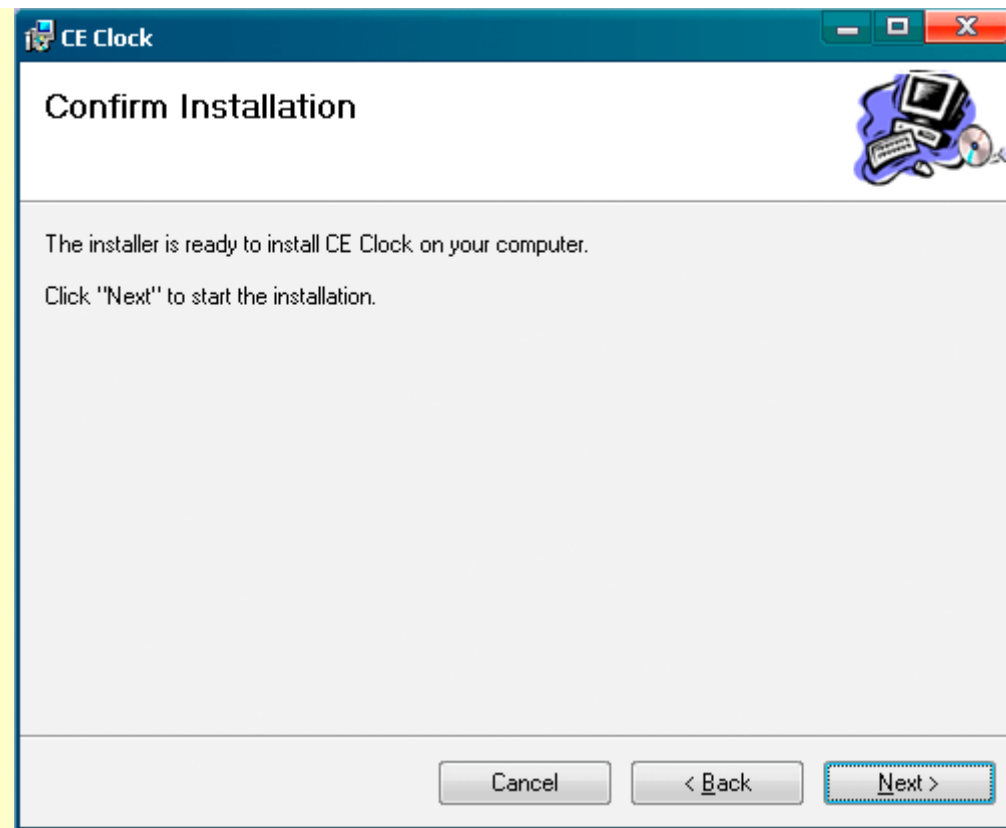
For example, you can double-click **Setup86.msi** to install it if your computer is 32 bit.



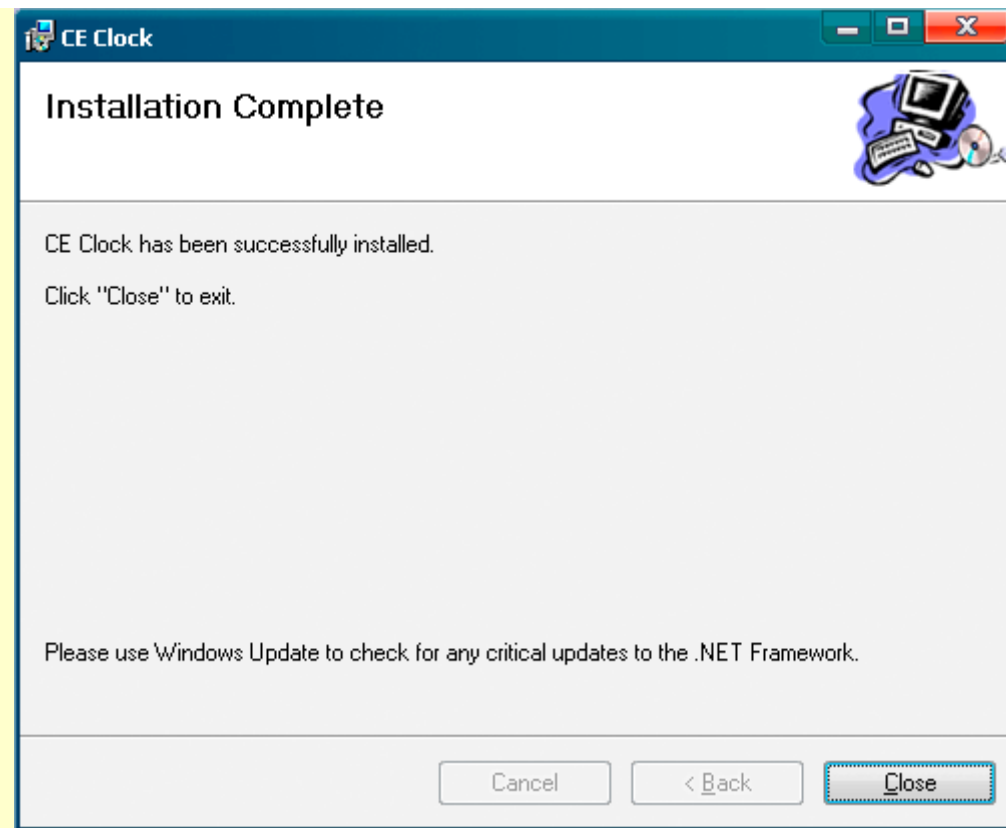
This is the wizard of installation. Click "Next" button.



Usually, you do not have to change the folder. Besides, everyone can use it by default. Click "Next" button again.



Finally, you can click "Next" button to start installation.



After installation, you can close this wizard. It has been installed in your computer successfully. You can start the software on [Start] menu.



# Preface

In the morning, many employees access the Internet after entering the offices. They will check mailboxes, read news, chat online and then forget the time. One hour has passed, another hour will pass soon.

The Internet is inefficient for everyone. Enterprises have to pay for employees for their inefficiency. To solve this problem is easy. Enterprises need clocks to remind employees when they are working.

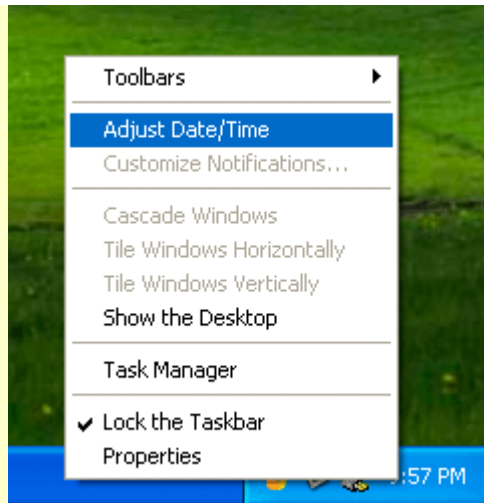


In fact, the *Windows Clock* is on the desktop. However, it is quite small and employees can turn a blind eye to it.

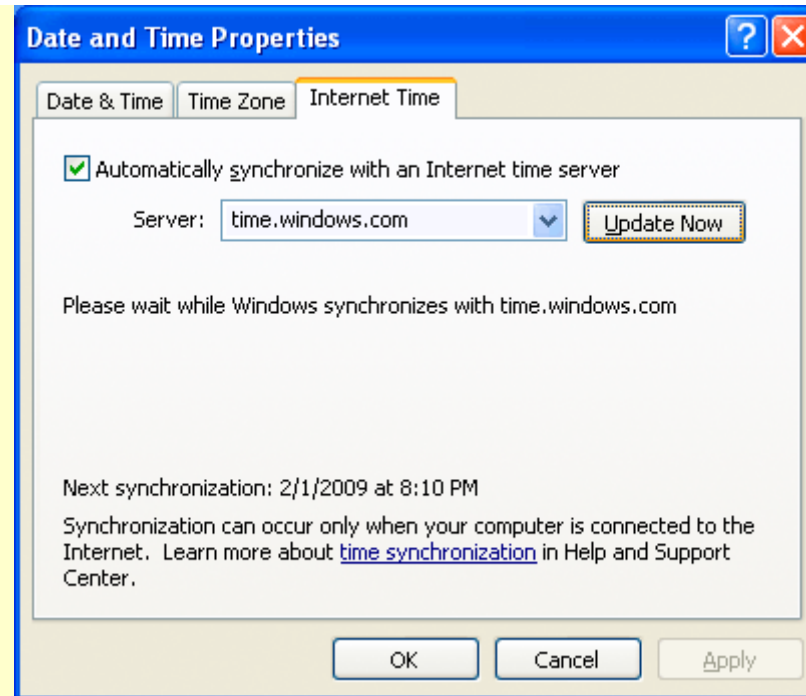


Little employees see *Windows Clock* when they are enjoying their lives on the Internet.

As a result, CE intentionally creates this clock to remind them. CE Clock™ displays the time clearly on the desktop.

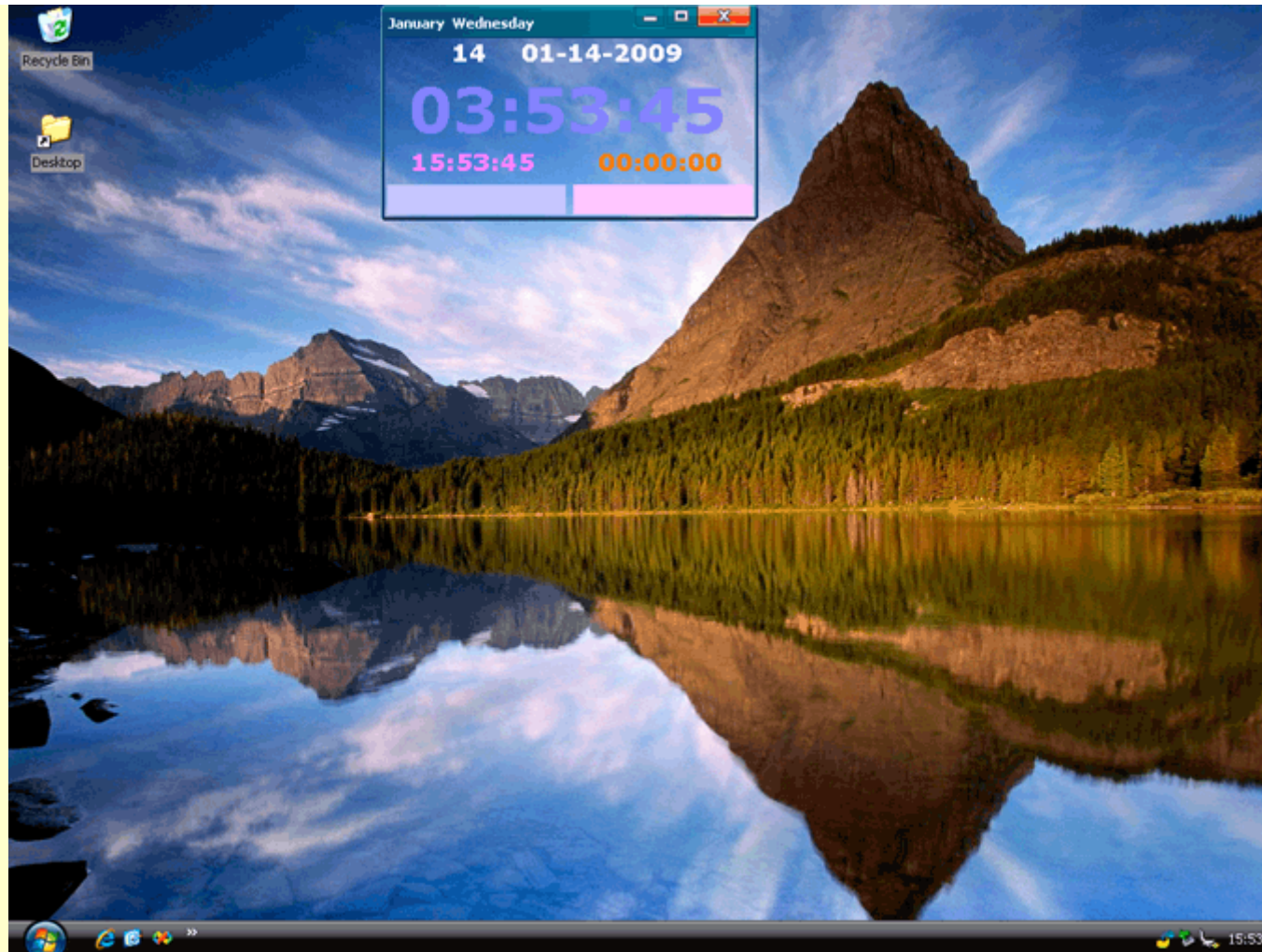


**Note:** *Windows Clock* just displays the system time. Right-click *Windows Clock* and then you can adjust the system time by choosing [Adjust Date/Time]. Anyway, CE does not recommend you to adjust system time by hand, because it cannot be accurate. You have to synchronize with the Internet.



System time is quite important. You cannot log in some Websites or systems if it is not correct. For example, you may not log in *Windows Live Passport* successfully if the system time is incorrect. Similarly, you may not be allowed to log in the Intranet because of wrong system time.

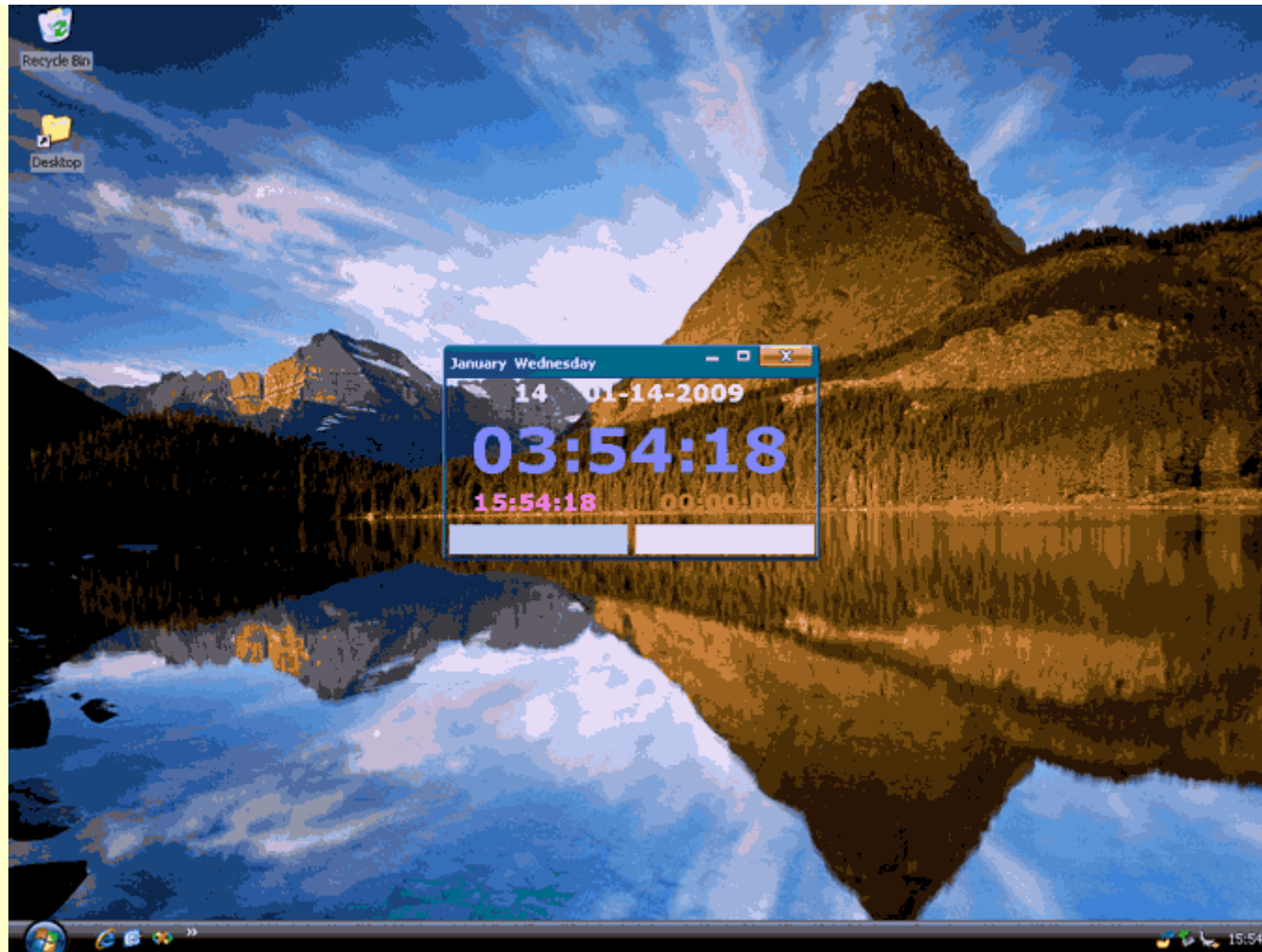
Therefore, CE Clock™ does not allow users to change the system time directly. This is different from other clock software.



After starting this clock, it will appear on the top on the desktop.

An employee may access the Internet for a long time. When they minimize the windows of browsers, they can see this clock clearly. Alternatively, it can be seen once computer users minimize other windows. Besides, it works on the background and does not influence other software or files.





The background of this clock is crystal. The font color may has the same color with the desktop. Then, you can drag it to the suitable position to see it clearly. Alternatively, you can change another wall paper. Note that it does not show in Taskbar. It is different from conventional software.



You can also minimize the window of this clock. Still, it does not show in Taskbar. Instead, it is above Taskbar.





You can start many clocks on [Start] menu. This software supports multiple windows. Definitely, you do not need to see time or date repeatedly. The multiple windows can generate multiple timers and alarms. Please read the chapters of **Timer** and **Alarm**.

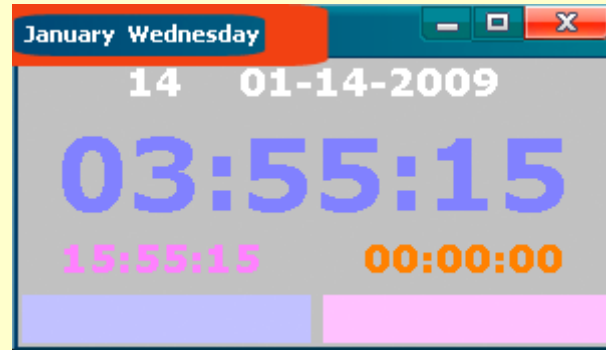


Multiple windows are over the Taskbar after minimization. Besides, they will be arranged orderly . Finally, the minimized windows will not be extruded like a caterpillar in the Taskbar.

Vitally, this software is quite stable. It will not collapse even you open many windows or start and close it frequently.

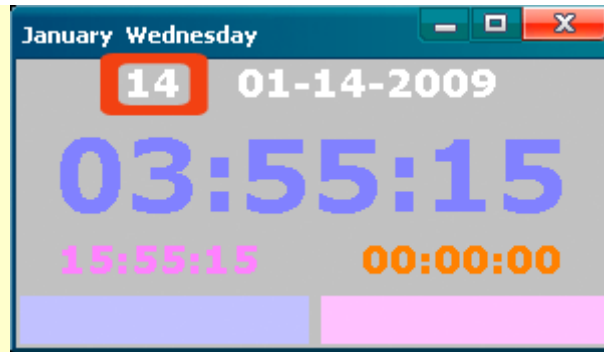


# Date & Time



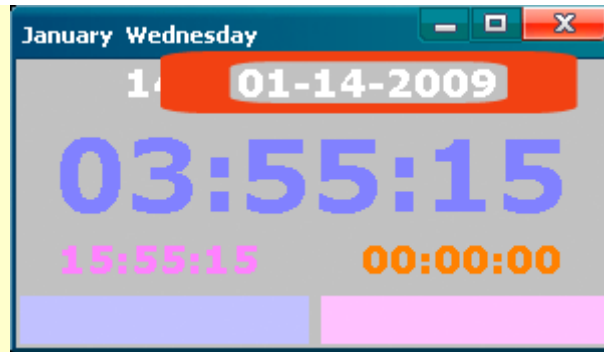
The texts of month and day appear in the title bar of the window.

You have to see them carefully. Unlike other clock software, it shows the full texts instead of abbreviations. You will not mistake them even you browse fast. For example, *Tue* looks like *Thu*. *Mar* looks like *May*. This function is indeed simple, but useful for you after you access the Internet and browse hundreds of Web pages.

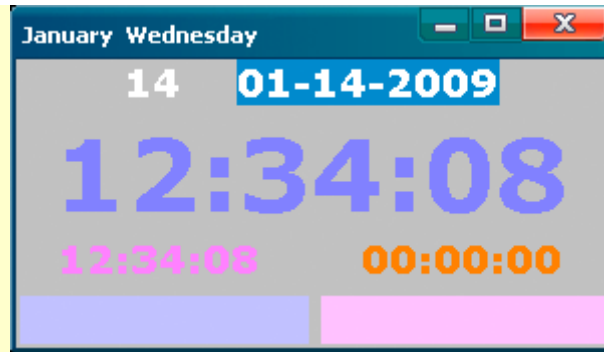


This is the *Day of Year*. You may seldom hear about it. For example, January 4, is the fourth day of the year. February 14, is the fortieth-five day of the year.

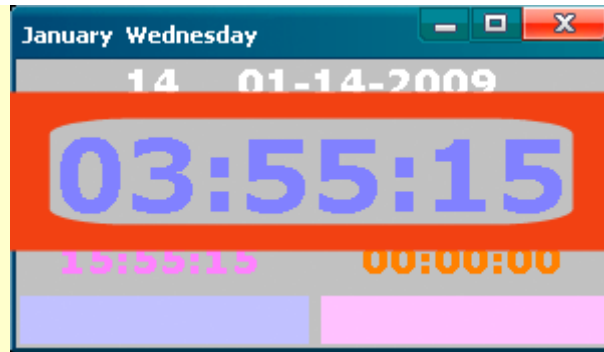
It is quite useful for you to calculate the rest of the year, if you use 365 or 366 (Leap Year) to subtract this number. For example, there are only 20 days left if the *Day of Year* is 345.



You can also see the digital date. The format is: Month-Day-Year.

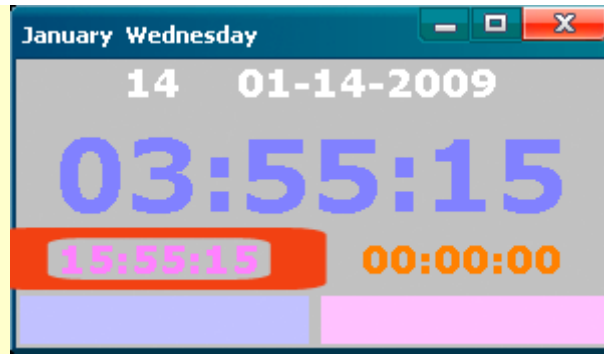


Note that digital date can be copied directly. Select the date first and then press **<Ctrl+C>** key to copy it. Then, you can paste it to your email or files. You can also copy the *Day of Year*.



Unlike *Windows Clock*, CE Clock™ displays second except for hour and minute.





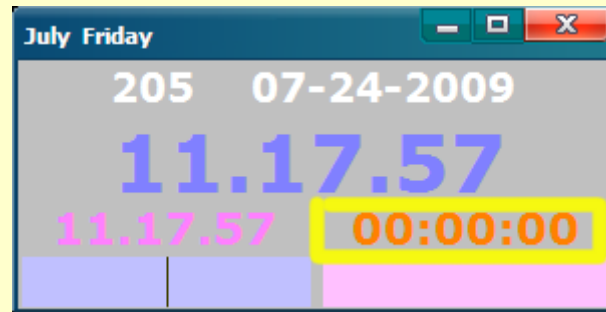
Besides, it displays 24 hours and 12 hours at the same time. You do not have to convert them at all. Note that the time cannot be copied.

The words of time are quite large, so that you can see it clearly. It reminds you of precious time when working.

As mentioned, CE Clock™ does not allow users to change time directly. This clock just displays system time. It is not safe or accurate to change it by hand.



# Timer



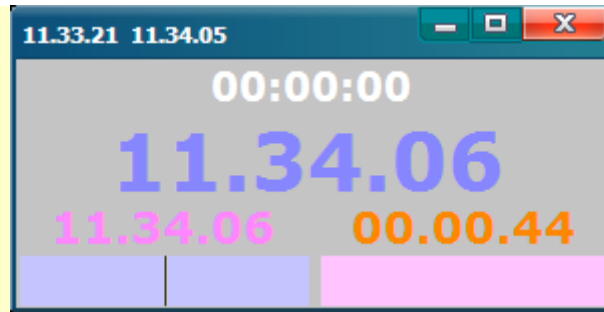
The color of the timer is orange. It does not contain any button. However, you can click it directly. Alternatively, you can press **<Ctrl+~>** key to start or stop the timer.



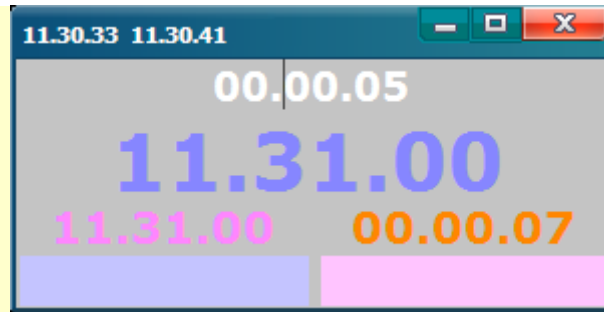
Your mouse will become a small hand after putting it on the timer.



The timer will start after you click it or press **<Ctrl+~>** key. Meanwhile, the title bar will show the start time. The disadvantage is that you can no longer see the date. You have to open another window on [Start] menu, if you need to see the date again.

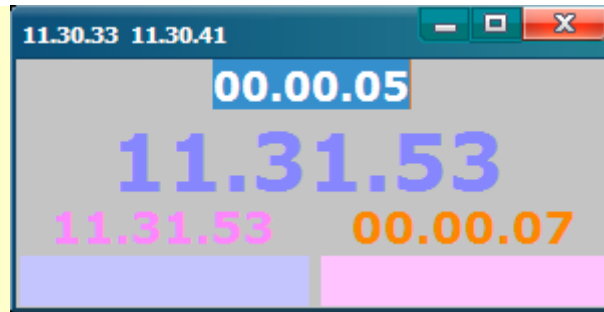


Then, you can stop it by clicking it or pressing **<Ctrl+~>** key again. Meanwhile, the title bar will show the start time and stop time at the same time.



To restart the timer, you can click it or press **<Ctrl+~>** key again. It can remain the last record of the timer. This is a significant improvement of the new version. As a result, you do not have to open another window. You can compare the two records, if you need to test different process time. Alternatively, you can add the two records together to calculate the total time, if the product or service pauses in the midway.

**Notice:** Sometimes, stop time has one second more. This is quite normal. The timer means to jump to next second. At this moment, you stop the timer, while the stop time has jumped to next second. You do not have to worry at all. The timer, start time and stop time are accurate enough. You just need to reduce one second of the stop time.



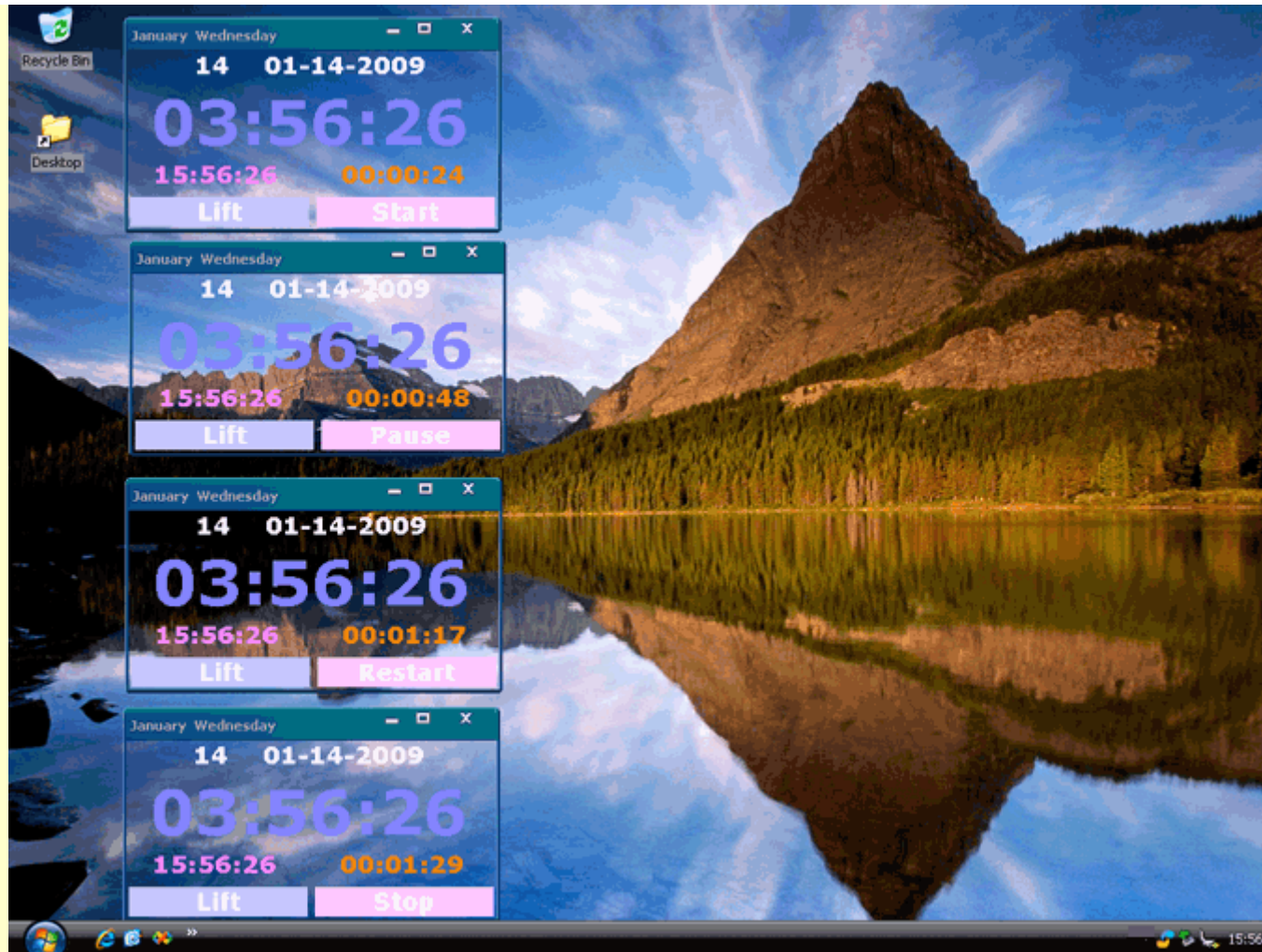
As mentioned, you can select and copy the last record if necessary.

Unlike other timers, this timer does not have the function of pause. According to the tests, many users are confused by the pause function. It means that the counting will stop for a while. Then, it will continue. It is divided into two periods. Unfortunately, most users will forget to record the time before pause. Finally, they can record the total time, but they do not know the exact time of the two periods. It is quite difficult to calculate the time of second period even they have recorded the time of first period. They have to use the total time to subtract the time of first period. Calculating time is the most difficult calculation in real life.

Most people will calculate wrongfully even they have calculators in their hands.

As a result, CE does not add pause function inside the timer. However, it does not mean that CE does nothing. In fact, CE simplifies this problem. As mentioned, this clock supports multiple windows. It means that CE Clock™ can be used to count each period exactly, without any calculation. Besides, you can use it to record the time of pause if necessary.





As an enterprise, you can use it to test the process time of products and services. For example, you are a lift manufacturer. You have to test a lift. Definitely, it does not just start and stop. Mostly, it will pause in the middle of a tall building. It means that it will pause for a while. Then, you can use this timer to record the time of each period like this image.

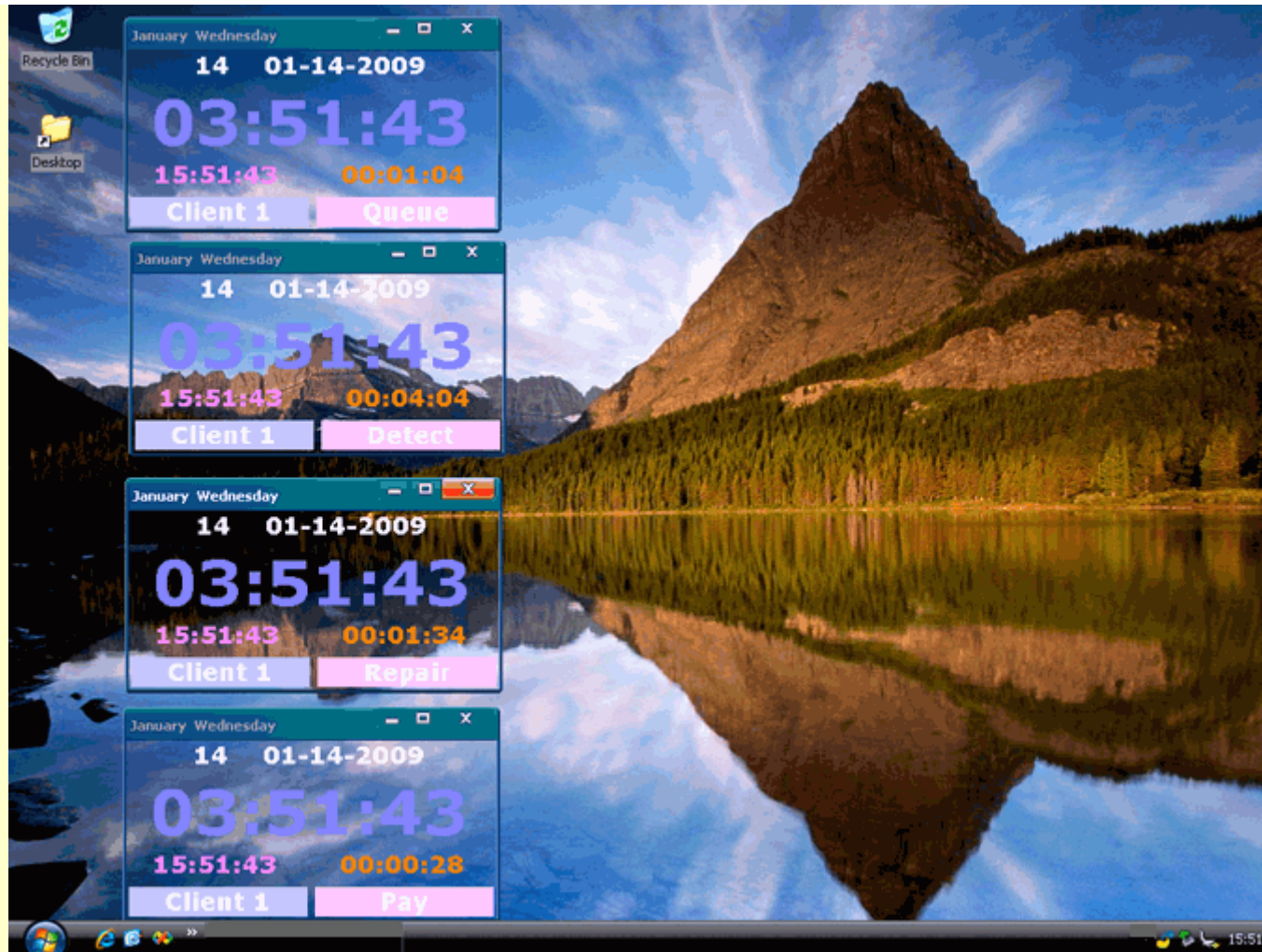
**Note:** You can write down the information in the text boxes. Each text box supports four hundred characters. They can help you remember what you need to record. Besides, this software use Unicode as the encoding. You can use all kinds of languages.

**Tip:** You can press **<Tab>** key on your keyboard to shift cursor between the two text boxes.



For more complex example, you are a food supplier. Your employees in restaurants serve various customers and clients each day. Usually, each employee have to serve a dozen of clients. Definitely, clients may not come to order foods one by one. They come in at random. Then, you can fast record the efficiency of an employee like this image. The records will remain in the windows. After you stop testing, you can calculate the average time of this employee. Finally, you can improve efficiency of

your service.

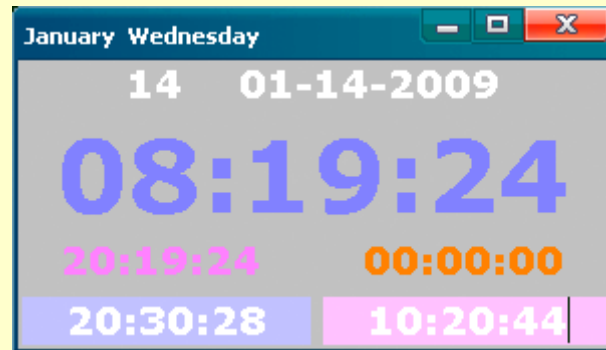


Sometimes, several employees have to serve one client at one time. Motor repair service is a typical example. The car of a client is broken. He or she comes in and ask you to repair it quickly. In this case, you should not record each employee. Instead, you should record your client. It means that you should record how much time your clients have to spend or waste because of your service.



You can use this timer to test all of your products and services with ease, after you master it. It helps you record the process time of each period, except for total time. It is much simpler and more useful, reliable and accurate than other software.

# Alarm



The two text boxes are alarms. Similarly, they do not require buttons at all. They alarms will play automatically after the arrival of time. You can just write down the time inside the text boxes and hear the sounds.

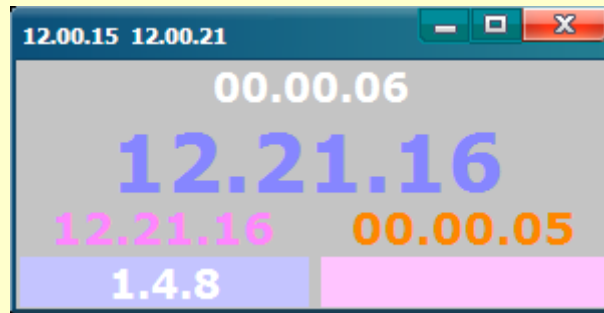
This software is quite suitable to be used in office, which is a public place. It does not have flaring sound functions like other clock software. The alarms cannot play MP3 songs. Otherwise, you will influence your colleagues. Vitally, your boss can easily assume that you are playing instead of hard working. He or she may fire you.

The alarms support 12 and 24 hours. You can write the two formats as you like. Usually, you should write the early time on the left box and the late time on the right box, so that you will not mistake

them. This is the good habit.



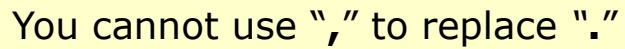
Usually, you cannot hear the alarms if you enter incorrect time formats.



**1:4:8** is not a standard time format of this clock. You have to write: **01.04.08**



You cannot enter other words inside, if you want to use the alarms.



Copyright © Casual Engine

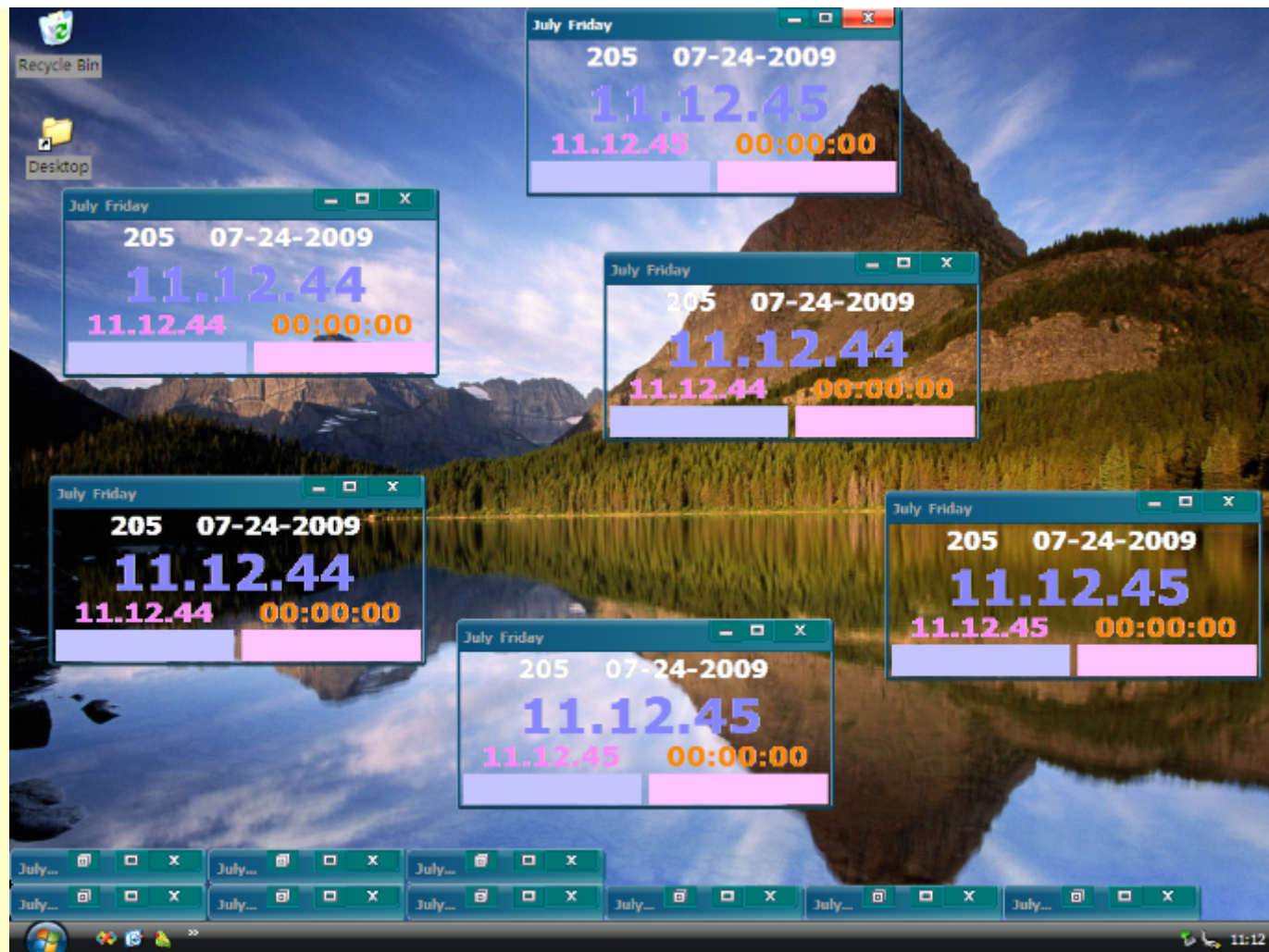


As mentioned, it supports multiple windows. As a result, you can create infinite alarms. Besides, you can directly write down contents into the text boxes. Each text box supports four hundred characters. It means that you can use them as a *Day Schedule*. This function is quite useful for office workers. After creating your schedule, you can minimize the windows on the desktop. They will not influence your work at all. Besides, this software use Unicode as the encoding. You can use all kinds of

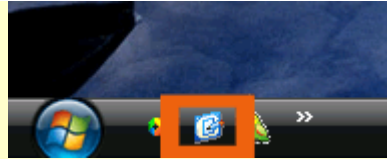
languages.

# Invisible Mode

Sometimes, you need to leave your computer for a while. You may have to get reports, drink coffee, or go to toilet temporally. Definitely, you do not want others to see your contents, because they may be sensitive.



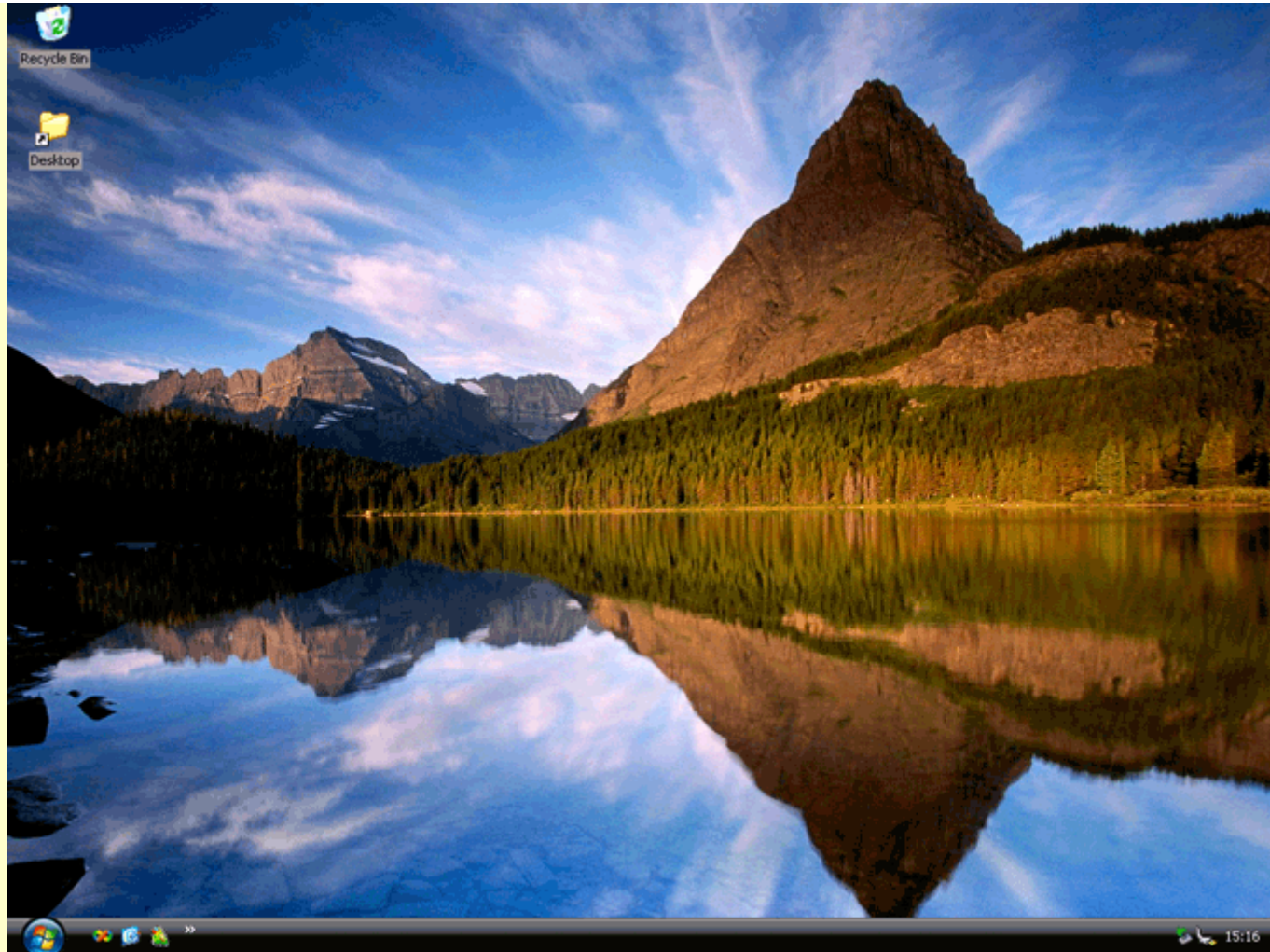
In this case, you do not have to save the contents and exit the program, and then restart the program and continue to edit the contents. Through the invisible mode, you can hide all the windows behind the desktop.



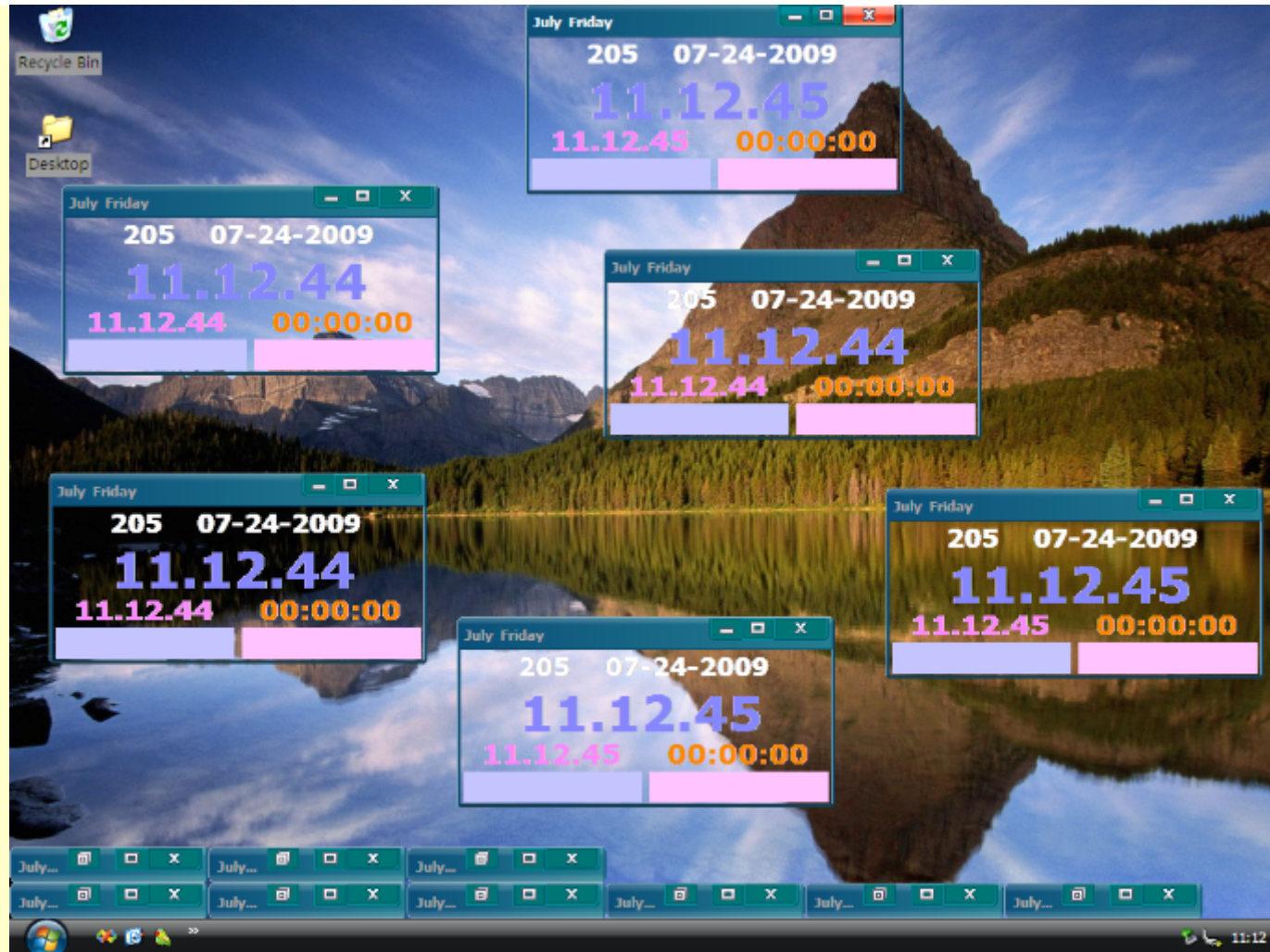
You can simply click the “Desktop” icon on taskbar. Alternatively, you can press **<Win+D>** key.

**Tip:** **<Win>** is the key, which has the logo of Microsoft.





All the windows will disappear immediately, without leaving any vestige. It is the magic of this software. You do not have to worry about the contents after the disappearance. The contents will remain inside the windows.



After clicking the "Desktop" icon or press **<Win+D>** key again, you can see all the windows for the second time.



# Shortcut Key

You can press shortcut keys on your keyboard. Combination keys mean that you keep pressing the first key and then press the second key. For example. **<Ctrl+A>**: Keep pressing **<Ctrl>** key and then press **<A>** key.

**<Tab>**: Shift the cursor between the text boxes.

**<Ctrl+~>**: Start or stop the timer.

**<Ctrl+M>**: Minimize the window.

# Security

CE Clock™ is security software:

It does not contain any virus, spyware, adware or advertisement. It is clean and pure software.

It does not contain any ActiveX, BHO, toolbar, or other plug-in.

It does not change the homepage or add contents inside your browser.

It does not use third-party components. All the functions come from original codes.

It does not change the system time. Besides, it does not control your computer. For example, it does not turn off your computer.

It is totally offline. Anyway, it will not access the Internet for registration, verification, update, upgrade, error report or other purposes.

It does not run automatically after you start the computer.

It locks itself when running. Virus or hackers cannot use it to attack the computer.

It does not save any data of users into the hard disk. It just keeps data in memory temporarily.

You can install the software (Installation Edition). Definitely, it has to write basic data in the Windows Registry and hard disk. However, the data will be totally removed from Registry and hard disk after uninstallation.



# Quality

CE Clock™ is high quality software:

It does not have any bug, error or loophole. From programming to testing, it has strict quality control. Its quality exceeds software industrial standards.

It uses C# 2.0 as the programming language to guarantee the security of memory when the software is running. It will never cause *Memory Leak*.

It works stably. It runs without collapse even you start and close this software frequently or open many windows.

It works on the background and does not influence other software at all.

Its interface has been designed carefully. The operating system cannot be hurt even users operate this software mistakenly and blindly.

It requires little resources, even you open many windows.

Its property is high enough.





## FAQ

### **Q: How to deploy the clock to hundreds of computers?**

**A:** As an enterprise, you may have hundreds of employees. To deploy this software all of the computers, you can put the software in the server. Then, ask the employees to download and install in their own computers. This is the fastest and easiest way. If the operating system is Windows Server, you can use *Active Directory* to install it to all the computers at the same time. Alternatively, you can use virtualization. Install the clock in the server instead of hundreds of computers. Then, the employees access the server and use it like the one in their own computers. This software allows virtualization and does not limit the license.

### **Q: Can individuals use it?**

**A:** Yes. Individuals can definitely use it, although it is mostly designed for enterprises. However, as a individual, you have to decide whether it is suitable for you. It is not fit for you if you are a stylish person and just want to decorate the desktop of your computer. This clock does not have flaring functions and interfaces. You can use it if you are a pragmatic person.

### **Q: Can it monitor the computers of employees?**

**A:** No. This is just a clock. Vitally, CE will never add this function into the software, because of privacy

and security.

**Q: Does the clock have inaccuracy?**

**A:** No, it just shows the system time of your computer. You can see slight delay after opening many windows of this clock, simply because of the startup of this software. All computers require time to process any software. Typically, you have to wait for several seconds to start *Microsoft Word* or *Adobe Photoshop*. Anyway, the delay cannot exceed one second. For example, you can see one windows display 11:24:05 while another windows displays 11:24:04. This is because the new window starts at the end of 11:24:04, and requires a little time to begin running. At this moment the existent windows has passed and become 11:24:05. All of the windows are accurate. You do not have to worry at all.

**Q: Does it use many resources of the computer if many windows are opened?**

**A:** It will use more resources but will not increase crazily. These windows are the same and can share the existent resources of memory and CPU. Usually, you do not have to worry at all if you open less than two hundred windows. Your computer will use virtual memory even you open thousands of windows. Besides, it can protect the operating system and give you tips if your computer does not have enough resources. Anyway, you can hardly face this problem, even you run *Microsoft Word*, *Adobe Photoshop*, Anti-virus software and *Windows Media Player* at the same time.

**Q: Is it high security and quality for enterprises?**

**A:** Yes. As an enterprise, you have to test software for several months before deployment. In your eyes, each word, which comes from CE, looks like advertisement. Its security, quality and property can be tested through your computer or professional testing software. After testing, you will find that it is the best clock software for your enterprise.

# Terms of Use

## **CE Clock™ END-USER LICENSE AGREEMENT**

**By using this software, you are agreeing to the terms of this license.**

This End-User License Agreement ("EULA") is a legal agreement between you (either an individual or a single entity) and the mentioned author (Casual Engine) of this Software for the software product identified above, which includes computer software and may include associated media, printed materials, and "online" or electronic documentation ("SOFTWARE PRODUCT"). By installing, copying, or otherwise using the SOFTWARE PRODUCT, you agree to be bounded by the terms of this EULA. If you do not agree to the terms of this EULA, do not install or use the SOFTWARE PRODUCT.

All versions of the SOFTWARE PRODUCT are protected by copyright laws and international copyright treaties, as well as other intellectual property laws and treaties. The sole property belongs to Casual Engine. The SOFTWARE PRODUCT may not be sold in any manner not described herein without the prior written consent of Casual Engine.

### **1. GRANT OF LICENSE.**

This EULA grants you the following rights:

#### License to.

The SOFTWARE PRODUCT license to enterprises and individuals for commercial and non-commercial purposes in business, commercial and non-commercial environment.

#### Installation and Use.

You may install and use an unlimited number of copies of the SOFTWARE PRODUCT.

### Reproduction and Distribution.

You may reproduce and distribute an unlimited number of copies of the SOFTWARE PRODUCT; provided that each copy shall be a true and complete copy, including all copyright and trademark notices, and shall be accompanied by a copy of this EULA. Copies of the SOFTWARE PRODUCT may be distributed as a standalone product or included with your own product as long as The SOFTWARE PRODUCT is not sold or included in a product or package that intends to receive benefits through the inclusion of the SOFTWARE PRODUCT. The SOFTWARE PRODUCT may be included in any free or profit packages, services or products.

## **2. DESCRIPTION OF OTHER RIGHTS AND LIMITATIONS.**

### Reverse Engineering, Decompilation, Disassembly and Modification.

You may not reverse engineer, decompile, or disassemble the SOFTWARE PRODUCT and change (add, delete or modify) the resources of the compiled assembly, except and only to the extent that such activity is expressly permitted by applicable law notwithstanding this limitation.

### Separation of Components.

The SOFTWARE PRODUCT is licensed as a single and complete product. Its component parts may not be separated for use on more than one computer.

### Software Transfer.

You may permanently transfer all of your rights under this EULA, provided the recipient agrees to the terms of this EULA.

### Termination.

Without prejudice to any other rights, the Author of this Software may terminate this EULA if you fail to comply with the terms and conditions of this EULA. In such event, you must destroy all copies of the SOFTWARE PRODUCT and all of its component parts.

## **3. COPYRIGHT.**

All title and copyrights in and to the SOFTWARE PRODUCT(including but not limited to any images,

photographs, animations, video, audio, music, text, and "applets" incorporated into the SOFTWARE PRODUCT), the accompanying printed materials, and any copies of the SOFTWARE PRODUCT are owned by the Author of this Software.

#### **4. LIMITED WARRANTY.**

##### NO WARRANTIES.

The Author of this Software expressly disclaims any warranty for the SOFTWARE PRODUCT. The SOFTWARE PRODUCT and any related documentation is provided "as is" without warranty of any kind, either express or implied, including, without limitation, the implied warranties or merchantability, fitness for a particular purpose, or non-infringement. The entire risk arising out of use or performance of the SOFTWARE PRODUCT remains with you.

##### NO LIABILITY FOR DAMAGES.

In no event shall the author of this Software be liable for any special, consequential, incidental or indirect damages whatsoever (including, without limitation, damages for loss of business profits, business interruption, loss of business information, or any other pecuniary loss) arising out of the use of or inability to use this product, even if the Author of this Software is aware of the possibility of such damages and known defects.

#### **5. REGISTRATION**

No registration of this FILE is required. It may be used free of charge without donation.

**Copyright © Casual Engine. All Rights Reserved.**

## Contact Us

**Registered Name:** Beijing Sound & Bamboo Network Technology Service Center

**Business Location:** Room 307, No.7 Building, Xizhihecun 5-1, Chaoyang, Beijing, China

**Zip Code:** 100023

**Email:** [casualengine@yahoo.com](mailto:casualengine@yahoo.com)

You can feel free to send your feedback or suggestion to us. You do not have to write the email as formal as a letter. Besides, you do not have to leave your name. You can simply leave a message like:

---

CE:

Your content

---

# Epilogue

CE Clock™ does not have various functions. You can hardly use it for entertainment or decoration. This clock is designed for enterprises, which require secure, clean and high quality software products.

This software is made like machine tools, although it is just a clock. CE has spent much time and energy creating this software and testing the quality and stability. You can still run it stably even your computer is full of virus, spyware and adware. Besides, its quality is first-class.

CE hopes that it could help enterprises and individuals use time correctly and promote your efficiency.

Good Luck!



## About Owner

*Beijing Sound & Bamboo Network Technology Service Center* is a commercial organization, which works in Beijing, China. It was found on October 15, 2008. Before registration in Beijing government, its team has been researching and developing technology over three years. It professionally provides high quality network services and software products.

Currently, it has a Website, which is called *Casual Engine*. This Website specially provides offline network service. Its mission is to reduce the costs of enterprises and individuals. Besides, it creates values for them.

**Business License:** 110105602133632

**Tax Number:** 441900198208310031

[www.casualengine.com](http://www.casualengine.com)

