



QUICK SETUP GUIDE

Introduction

Congratulations on Obtaining the Greatest Affiliate Promotional Application on the Net!

The CraigsAgent application allows you to send hundreds of emails promoting items you find on eBay, using your eBay affiliate link, to people posting ads in the wanted section of Craigslist.org.

You'll be able to do this without spamming the valuable members of Craigslist. In fact, you'll receive hundreds of "Thank You" emails from people who are grateful for what you're doing for them.

But little do they know... it only took you about 10 seconds to send them that email, and you have moved on hundreds of others with minimal effort.

In this guide, I'm going to explain how to set up CraigsAgent as quick as possible so that you can immediately start promoting your affiliate eBay links to the eager customers on Craigslist.org.

There is also a video version of this guide at the following link:

[How to Configure CraigsAgent - Video](#)

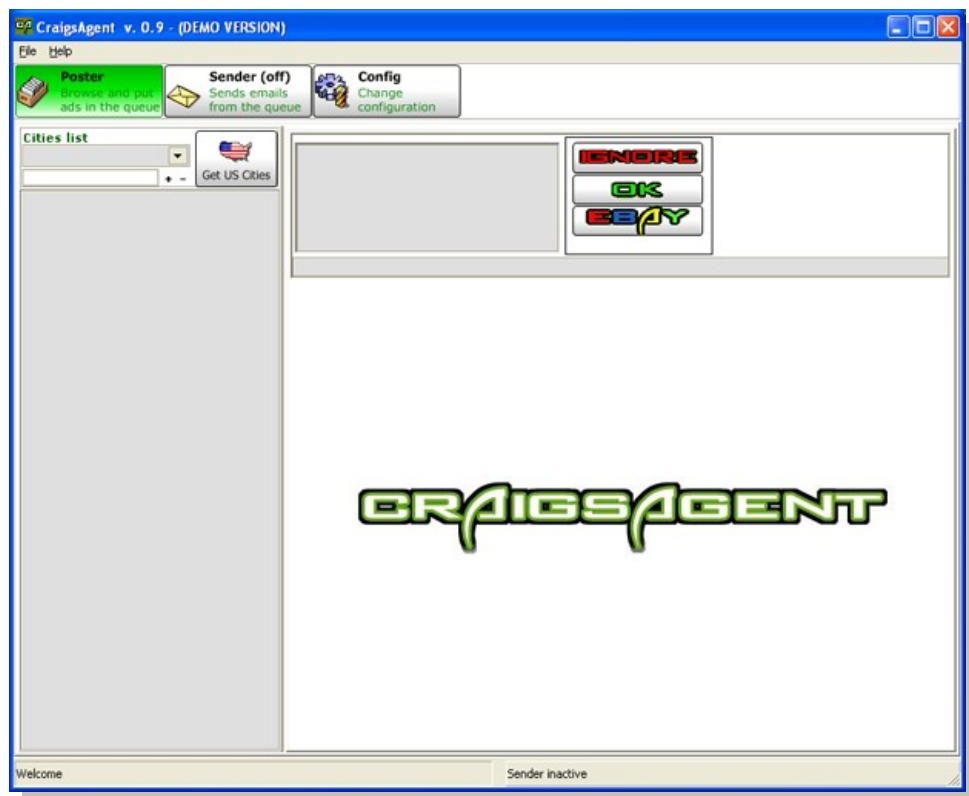
Table of Contents

1. **[General Configuration](#)**
2. **[Email Accounts](#)**
3. **[Email Templates](#)**
4. **[CraigsAgent Poster](#)**
5. **[CraigsAgent Sender](#)**

CraigsAgent Quick Setup Guide

General Configuration

When you first open up CraigsAgent, you will see the following screen.

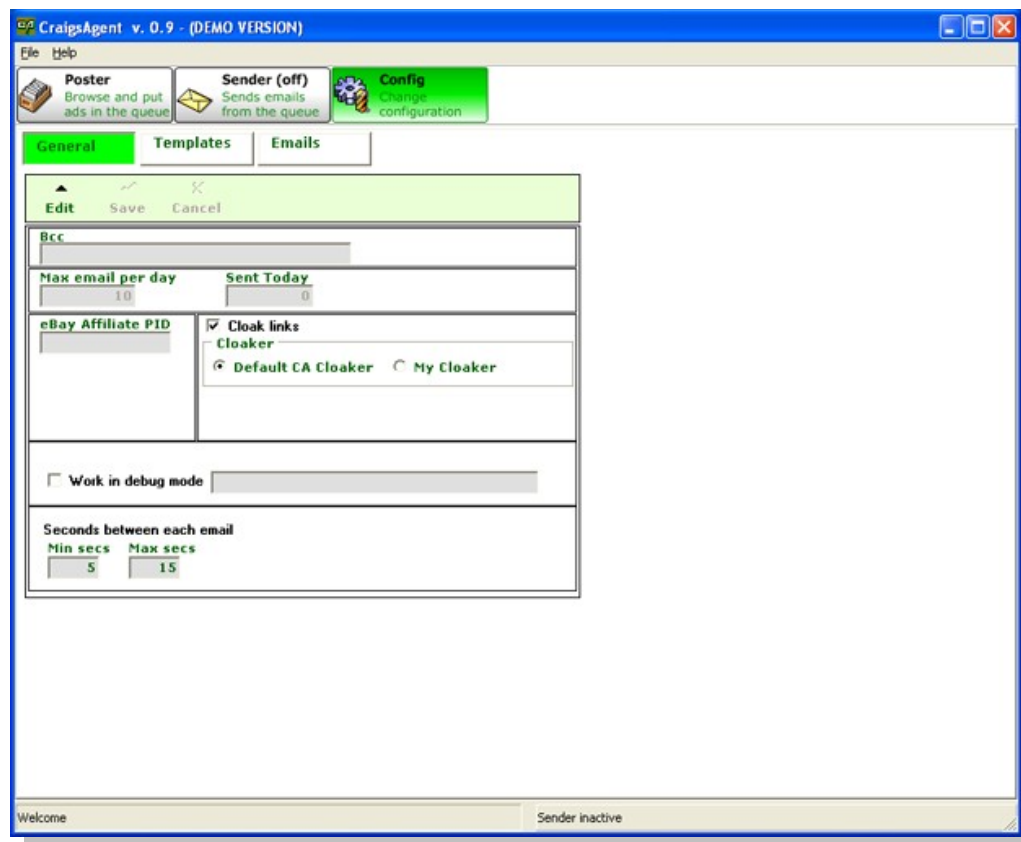


In order to set up the main application parameters, click on **"Config"** in the main tool bar. You will then see the configuration screen with 3 sub tabs (General, Templates, and Emails). This is what the application looks like inside of the "General" sub tab.

(next page)

CraigsAgent Quick Setup Guide

Configuration Screen



The following information explains what you'll need to insert inside each area.

Bcc (Blind Courtesy Copy): If used, the application will send every ad answer to this email too (the receiver will not see this email address). This is good for documenting all of the emails you have sent. This is an optional field.

Max email per day: The maximum number of emails to be sent each day. If you have a demo version of CraigsAgent, this is limited to only 3 emails per day and can not be changed. You can purchase a license to unlock CraigsAgent by visiting www.Craigs-Agent.com and purchasing our software. The "**Sent Today**" box shows you how many emails you sent for the current day.

eBay Affiliate Program PID: This is the PID of the Commission Junction eBay affiliate program (explained in the [setup video](#)). **You need to sign up with Commission Junction if you want to get paid!**

Cloak Links: Link cloaking hides your ugly eBay affiliate links inside of your promotional emails, and instead makes them more presentable and inviting looking.

Example: <http://www.craigs-agent.com/recommends/>_____ looks much better than...

<http://rover.ebay.com/rover/1/711-01349=3204879239230-2309478229=2=3470720238942=230723=239207j;sd3...>

CraigsAgent Quick Setup Guide

You can choose to turn on or turn off link cloaking inside of CraigsAgent. Leave the check box checked if you wish to use link cloaking (highly recommended). Leave the button "Default CA Cloaker" pressed if you are not familiar with how to set up a cloaking script on your own server.

If you have experience with this and would like to use your own web server to cloak links, you'll find a complimentary cloaking script inside of the CraigsAgent zip file that you downloaded. There are instructions inside to help you set up your own cloaker if you wish to do so.

Work in debug mode: To test the application, you can send each ad to the specified Debug Email instead of sending it to the right email address. The application will insert in the email the phrase: "To send to sale-XXXXXXX@Craigslist.org" so that you know it is just a test email.

MAKE SURE TO UNCHECK THIS when you're ready to send real emails. Otherwise you'll just be emailing yourself and wondering why you're not making any money :)

Seconds between each email: I suggest NOT to blast each email immediately, but to put a little time frame between each send. The application will choose a random number of seconds between Min secs and Max secs. The default is set between 5 and 15 seconds.

Email Accounts

The next step is to set up the email accounts that will be used to send the responses to your Craigslist customers.

Click on the “Emails” sub tab inside of CraigsAgent.

Currently, the application only supports Gmail Accounts (in the next release I will add other email ISPs).

You can just set up the accounts by going to <http://gmail.google.com> and creating at least 5 unique Gmail accounts.

I suggest you set up multiple accounts according to how many ads you plan to send each day. The software automatically uses all the accounts to send email. So, if you want to send 90 ads and you have set up 10 accounts, 9 emails per each account will be sent. Notice that Gmail will freeze an account if you send more than X amount of emails in a little time frame. (I still don't know how much is X, but from my tests, if you send no more than 10 emails per account you will not have any problems).

So, if you have a Gmail account myaccount@gmail.com, with password “mypassword” here are the correct values for each field:

The screenshot shows the CraigsAgent v. 0.9 - (DEMO VERSION) application window. The 'Emails' tab is selected, displaying a configuration form for a Gmail account. The form includes fields for User, Password, Email, Host, Port, and Name. Below the form is a table listing the configured email accounts.

Email	Name
myaccount@gmail.com	Steve

The status bar at the bottom indicates 'Welcome' and 'Sender inactive'.

CraigsAgent Quick Setup Guide

(Make sure you type these in correctly, or else you will get a "Socket Error" inside of the program and will be scratching your head for hours trying to figure out what's wrong...)

User: myaccount (Example: If your email is scubasteve@gmail.com , just put "scubasteve")

Password: mypassword (Your password for this specific Gmail account)

Email: myaccount@gmail.com

Host: smtp.gmail.com (This is **NOT** smtp@gmail.com... a common mistake)

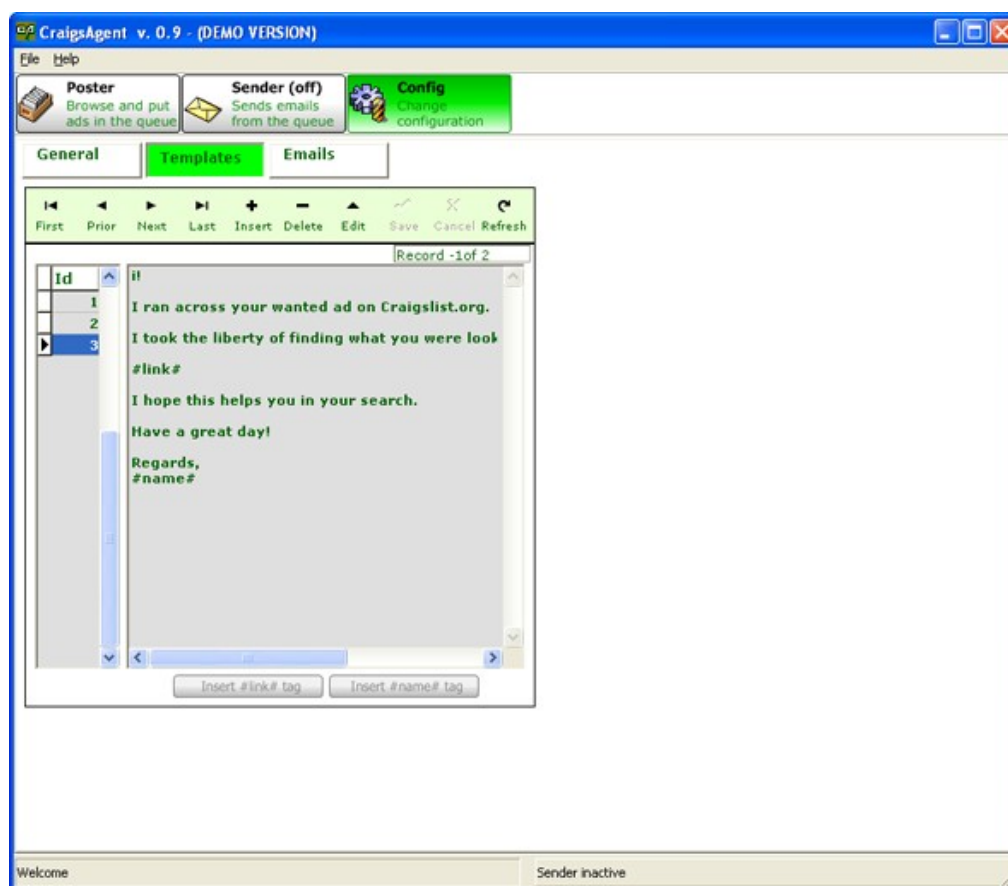
Port: 465

Name: a name to use in the template (I usually just put my first name, Steve)

Email Templates

In order to avoid to being flagged by Craigslist and Gmail (you can't send the same email too many times) the application supports multiple templates (as well as email addresses as seen in the previous section). You can add as many templates as you want. You need only to add two tags in each template.

Click on the "Templates" sub tab inside of CraigsAgent.



#link# This tag will be replaced with the CLOAKED (unless you have disabled cloaking) eBay affiliate link containing your CJ PID affiliate code.

#name# This tag will be replaced with the name of the current email account which is used to send the ad. In the previous chapters example, this would say "Steve".

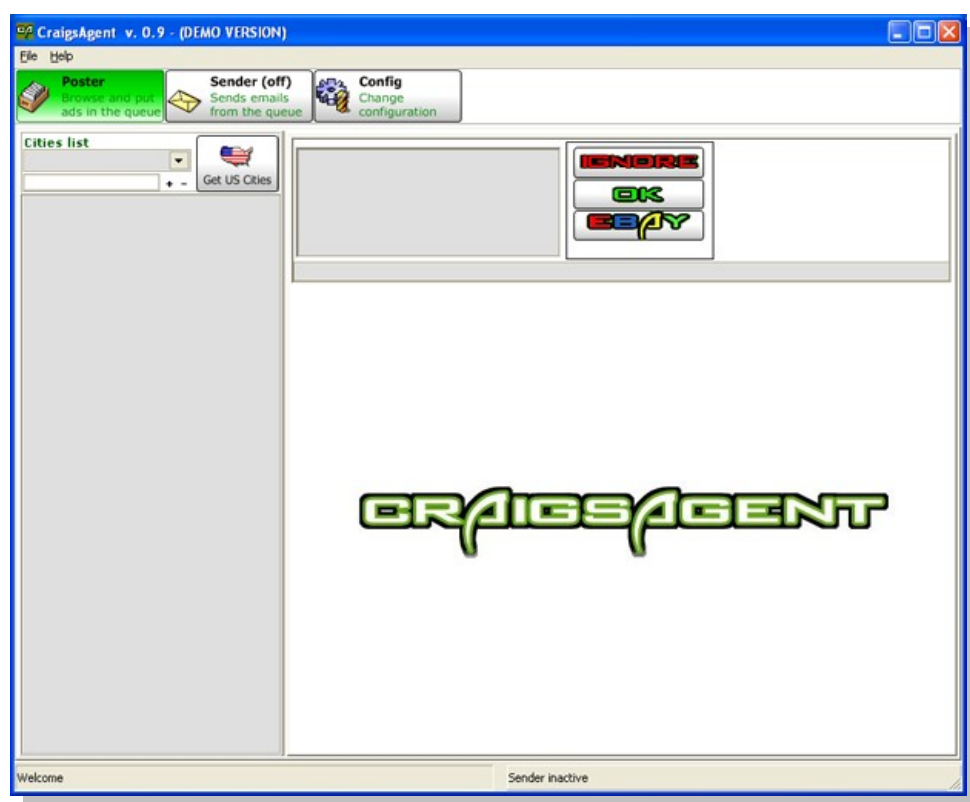
To add a new template, simply hit the "Insert" button and start typing in your new message. Don't forget to include the link and name tags. There are two buttons at the bottom of the window that allow you to insert them easily. Then click "Save".

CraigsAgent Poster

The CraigsAgent poster is where you'll be doing all of the work (trust me, it's not much work at all)!

This is where you'll match up Craigslist want ads to matching items on eBay. The program will do all of the other work for you, such as creating your affiliate link, cloaking it, and queuing up emails to be sent out (discussed in the next chapter).

Here are the steps necessary to start creating email correspondence:



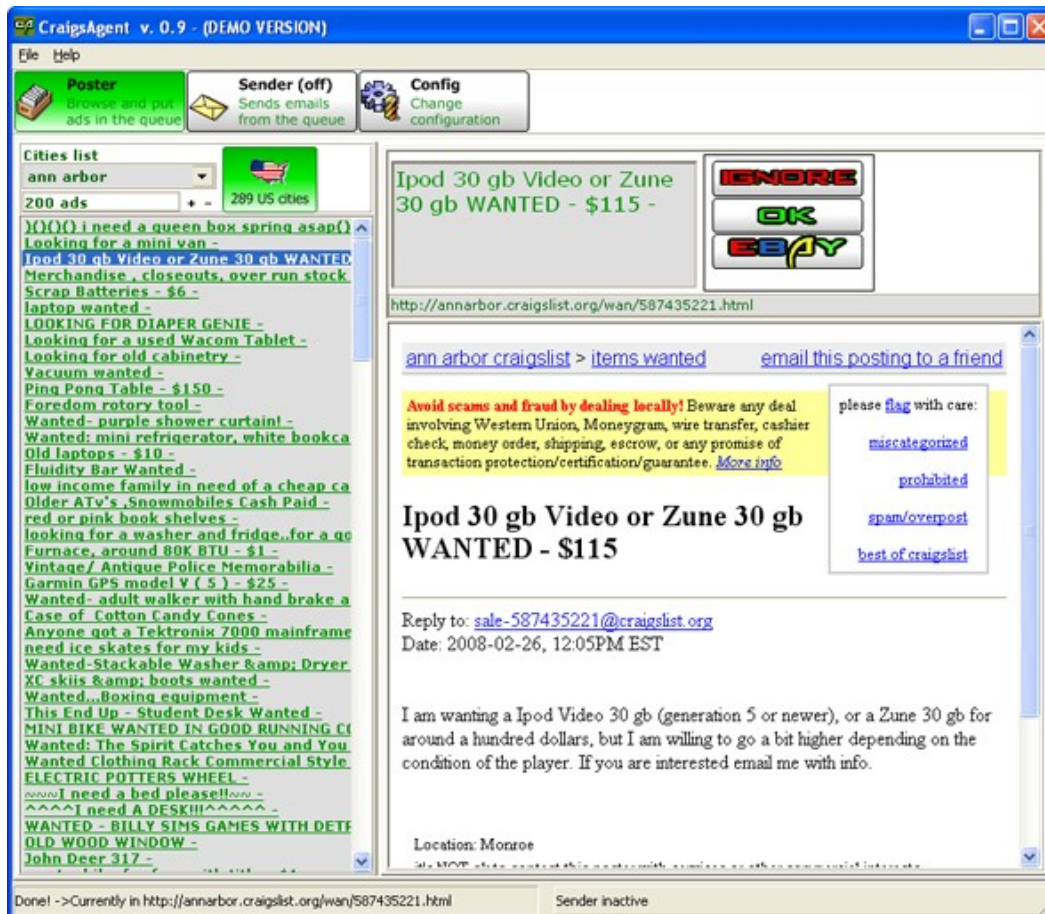
1. Click on the button "Get US Cities" with the map of the United States on it: the software will connect to Craigslist and will import all of the US cities currently on Craigslist with wanted ads.
2. Select a city from the list (click on the drop down arrow to see the cities). By selecting a city, you will see all the available ads for that city (the most recent ads)

Select one ad by clicking on it: The ad content will be displayed and the ad title will be displayed in the "working area". Take a look at the ad content and decide if the wanted item could be found on eBay. In the example below, the user wants a 30gb Ipod or Zune

CraigsAgent Quick Setup Guide

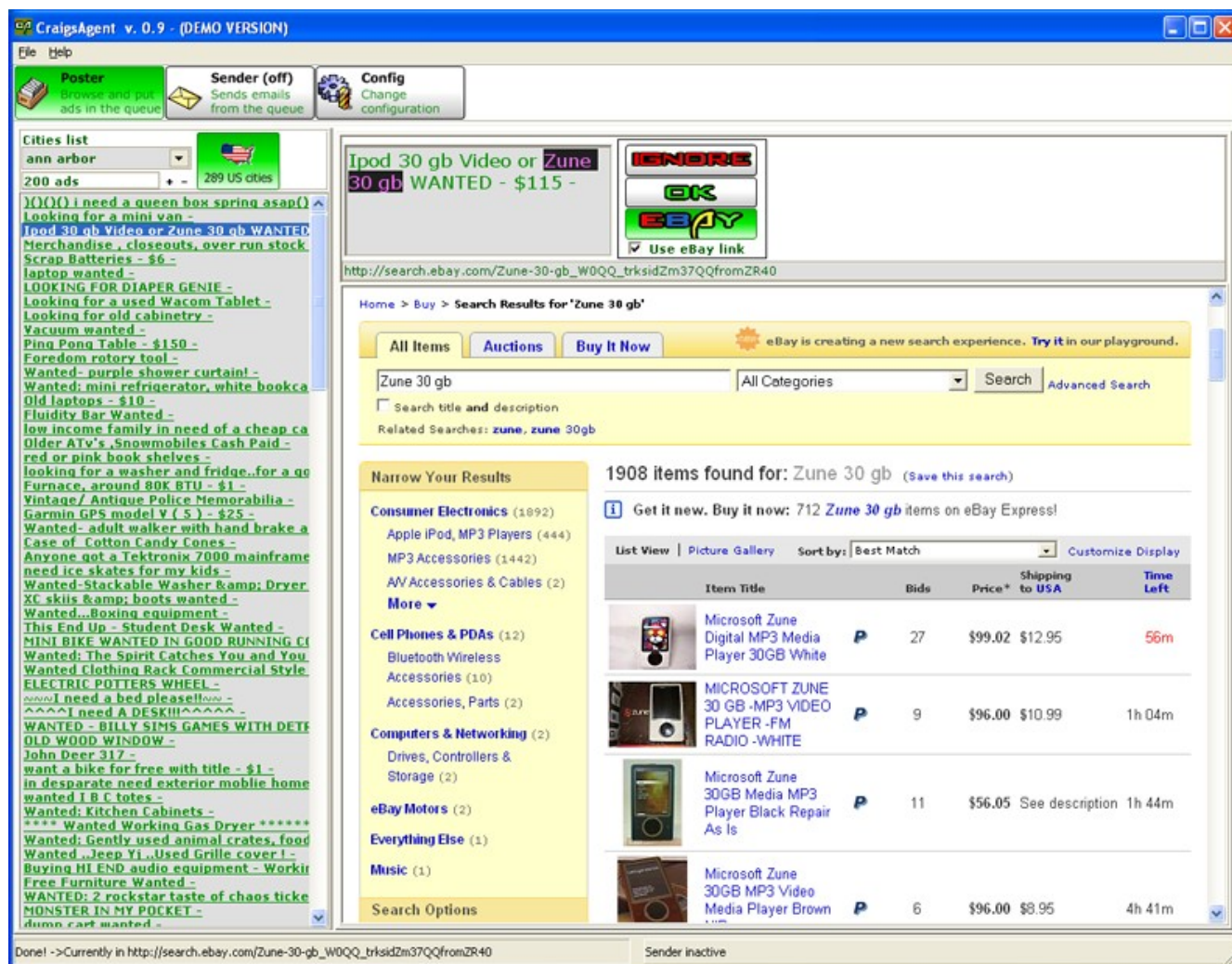
for under \$115.00.

This should be extremely easy! We'll help this fellow out in his search :)



3. In case you think that the item can't be found on eBay, click on the "IGNORE" button. The application will delete the ad (NOTE: the application "remembers" you have deleted that ad, so you never will see it again).
4. Highlight the keywords that you want to search eBay for. I will search for a 30gb Zune. Note how I have highlighted the keywords in the following image. Click on the eBay button, and then eBay will pop up with your search results for "Zune 30 gb".

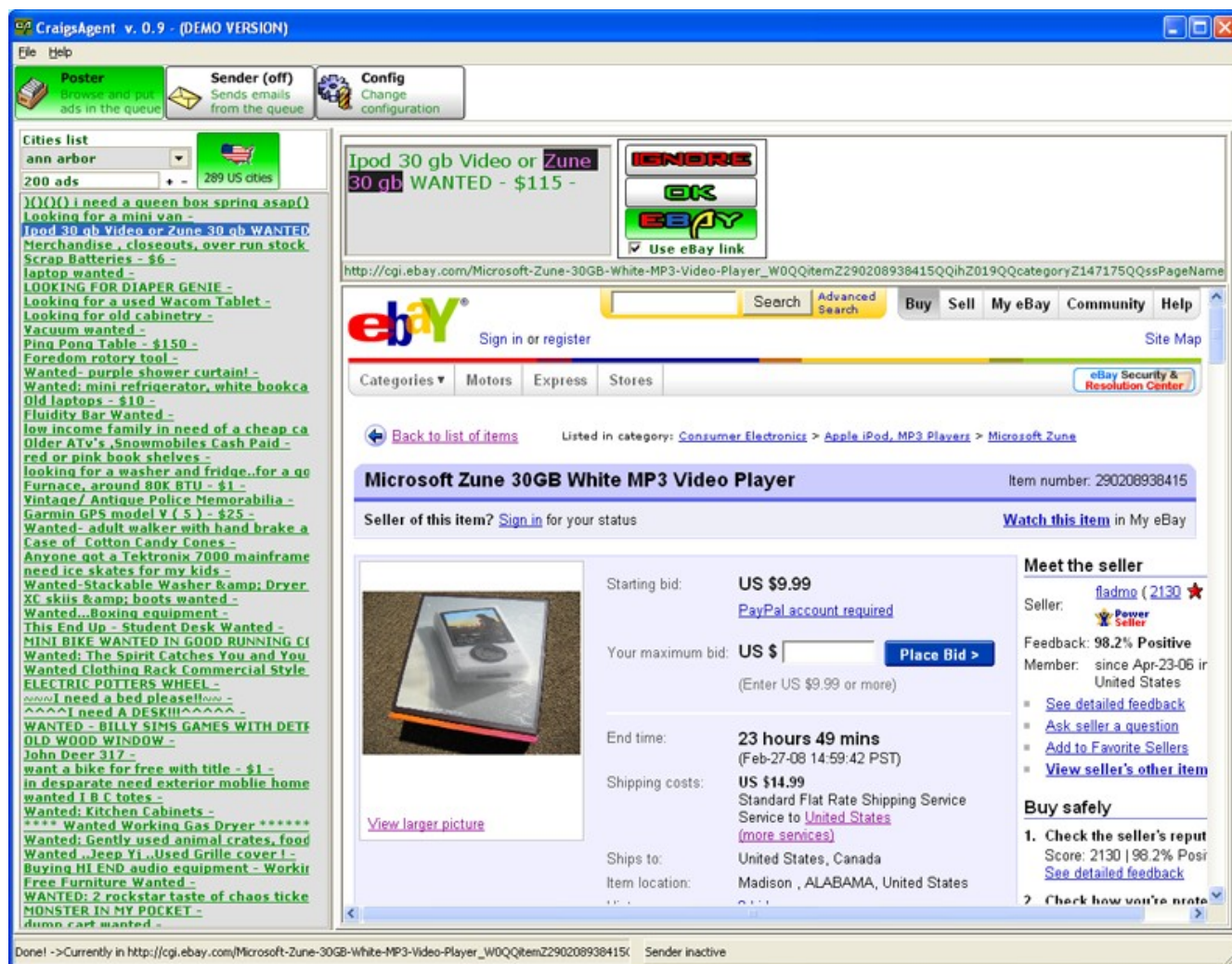
CraigsAgent Quick Setup Guide



5. You can browse through eBay to a specific auction or you can just send the entire search results page to the customer. In our example, I will send him to a specific auction. Simply find a matching auction in the eBay search results.

* I try to find auctions that have at least 24 hours left so that the customer has time to read my email and see the auction before it expires.*

CraigsAgent Quick Setup Guide



6. Once you are on the specific page for the auction you want to promote, click the "OK" button. The application will prepare an email using one random template, and put within it a link to the eBay auction page containing the wanted item.

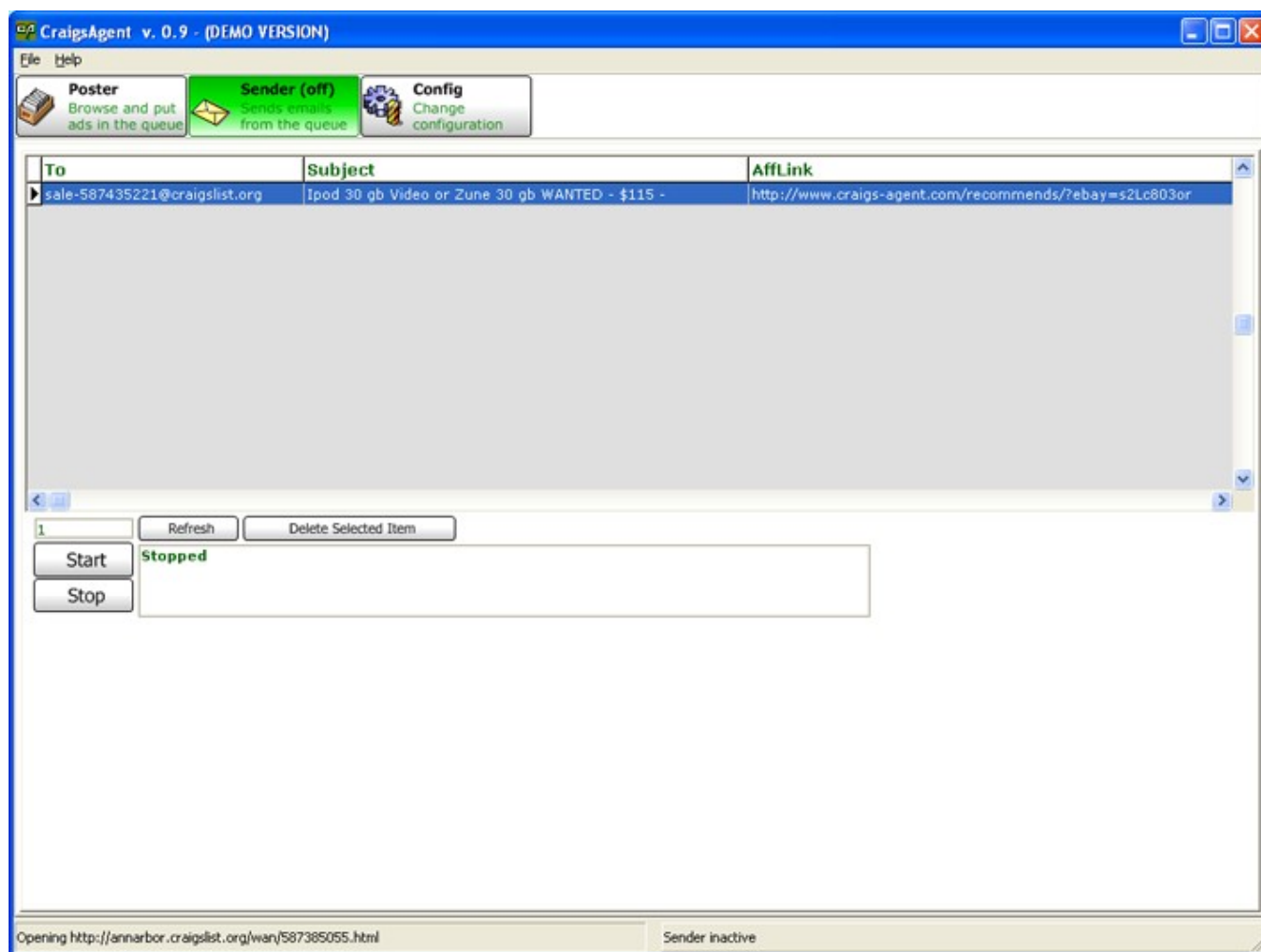
Once you have hit "OK", your email will be queued up and ready to send inside of the CraigsAgent "Sender".

However, you can still stay inside of the Poster and find more items to queue up. They will be ready for you to send once you head over to the "Sender". In the next chapter, we'll explore how the Sender works.

CraigsAgent Quick Setup Guide

CraigsAgent Sender

Once you have started using the Poster to locate Craigslist ads with corresponding eBay auctions, simply click over to the "Sender".



You will see a listing of all correspondence emails that you have queued up, ready to send to the Craigslist customers.

You will see the "reply to" email address directly to the user on Craigslist, the name of the Wanted Ad in the "subject" line, and then your own cloaked affiliate link straight to the item on eBay.

Simply click on the Start button to begin sending the queued emails. They will be sent at the interval specified when you configured CraigsAgent (defaulted to 5 – 15 seconds between each email sent). You can continue to work inside of the "Poster" while your queued emails are being sent.

And that's it!

CraigsAgent Quick Setup Guide

Now all that's left to do is log into CJ.com every other day and start looking for your commissions!

If you have any questions about the software, we have a great forum set up. Please stop by and register.

Donato and I (Steve) will be on there everyday to help you with anything you need in regards to our software.

Visit our dedicated forum at:

www.Craigs-Agent.com/forum

If you are using the demo version of CraigsAgent still... then my question to you is... why? To unlock the full potential of CraigsAgent and send out hundreds of referrals each day, you'll need to purchase a license.

To do this, simply visit www.Craigs-Agent.com. You'll be able to obtain a license key during checkout so that you can start dominating Craigslist immediately!

Enjoy the software and we look forward to hearing from you!

Sincerely,

Steve Mount and Donato Spagnolo