

Current Charts

By Mountain Rose Multi Media

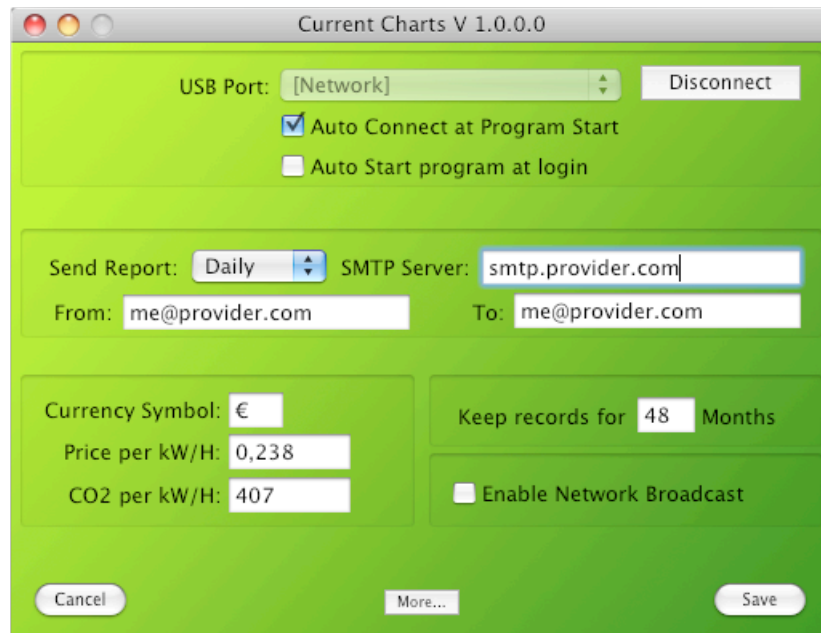


Thank you for your interest in Current Charts, the best application to get the most out of your Current Cost Envi CC128. Current Charts is available for both Windows and Mac OS X. This manual is suitable for both versions, although all the screenshots are taken using the Mac OS X version. Some of the highlights of Current Charts are:

- Works both on Mac OS X and Windows
- Create stunning charts of your energy consumption, CO2 production and costs.
- Charts for real-time data and historical data.
- Automatically create a website about your energy consumption. Several templates included.
- Upload all charts, including thumbnails, to a ftp server.
- Network clients included. See the real-time energy consumption (and temperature) on any computer in your network.
- Receive energy report in your mailbox (daily, weekly or monthly).
- No complex installation procedures. Just double click to run it.
- More....

Preferences

As already mentioned there are no difficult installation procedures. Just unzip the distribution archive. Windows users should copy the Current Charts directory to "C:\Program Files". On Mac OS X you should copy the Current Charts program to the Applications folder. Next you can start the Current Charts application with a double mouse click. On Windows a new icon will appear in your system tray. Mac OS X user will see an extra icon in the menu bar. Click on this icon (right click for Windows), select Preferences from the menu and the following screen will appear:



At the top you'll find a drop down list of the available USB ports (or COM ports on Windows). Select the port to which your energy meter is connected. (The special port [Network] will be discussed later). Click on the Connect button to see if things work. Select Preferences from the menu again to return to this screen.

If you're sure connection with the energy meter is working correctly, you can select the check mark "Auto connect at Program Start", which means the program will click the Connect button for you just after you've started the program.

If you're a Mac user you can also specify that Current Charts should automatically start when you logon to your computer. Windows Users should create a shortcut into their startup directory to accomplish the same.

Reports & More...

Current Charts is capable to generate energy reports and send them to your mailbox. Just select how often you want a report (daily, weekly, monthly), enter the address of the mail server you're using and both the From- and To address that should be used to compose the email.

Below the report frame you'll notice some more frames. In the left one you can enter the currency symbol used in your country. Current Charts tries to read it from your system, so most of the time you don't have to change it. Next is the price you pay for a kWh. You can read that from your energy bill. And last you can enter the CO2 production for each kWh. This depends on the way your electricity company generates the electricity. You need to check with them.

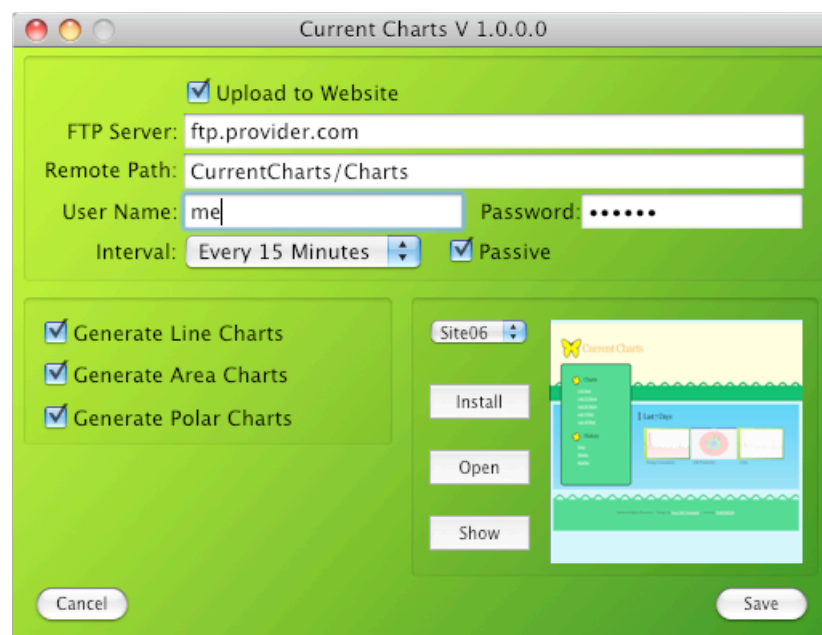
Current Charts stores every value coming from your Current Costs Envi into a database. Although this database is very efficient, you probably don't want to keep the records for more than a couple of years. In the bottom left frame you can specify how many months you want to keep the records.

Although Current Charts is primarily written to run on the computer to which the energy meter is connected, this doesn't mean this will be the only computer you can use to see the energy consumption. If you select the option 'Enable Network Broadcast', all readings coming from your Current Costs Envi will be broadcasted on your network.

There are two ways you can see those readings on the other computers on your network. You can install Current Charts on the other computers and select '[Network]' as USB/Com-port. This will give you a full blown version.

The other option is to install the 'Current Charts Receiver' application. This program will only display the live readings in your menu bar (Mac version) or system tray (Windows version).

[Click More... for the next Preferences screen]



Besides displaying different charts on your computer screen (more on that later) Current Chart is able to generate a nice looking website for you. This is where this second preferences screen is for.

If you want to can design your own web site, but as a starter we've included a couple designs for you. At the bottom right frame you can select one of the build in templates. When you select one from the drop down list, a sample picture is displayed. If you actually want to use that template, you can click the 'Install' button. At that moment all the pages are written to your local hard drive. If you click on the 'Show' button this local site is displayed in your default browser.

If you click on the 'Open' button the directory containing all the files will be opened. You should upload all those files to your public web site at the server of your provider.

Although the html pages are always the same, the chart graphics are changing constantly. To be able to keep your web site up to date Current Charts can upload the graphics to your web site at a specified interval. Just check the option 'Upload to Website' and enter the information needed to logon to the ftp server of your provider.


At the left frame you can specify which charts Current Charts should generate. This doesn't have effect on the charts you can see in the program itself, but on the graphics you use on your web site.

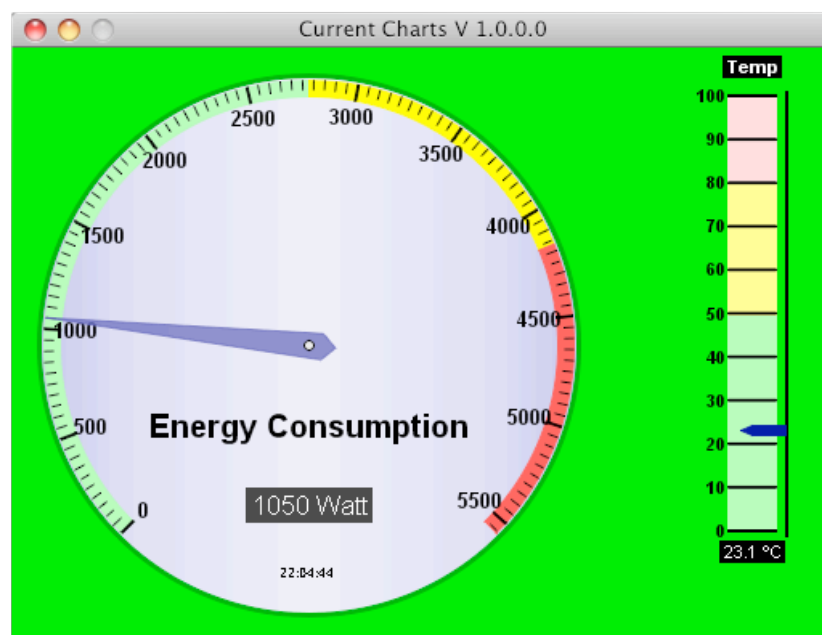
There are three types of charts that can be generated. You can enable/disable each one of them. If you're going to use one of the build in web templates you should enable all three of them.

Hit 'Save' to save all your preferences.


Displaying Information

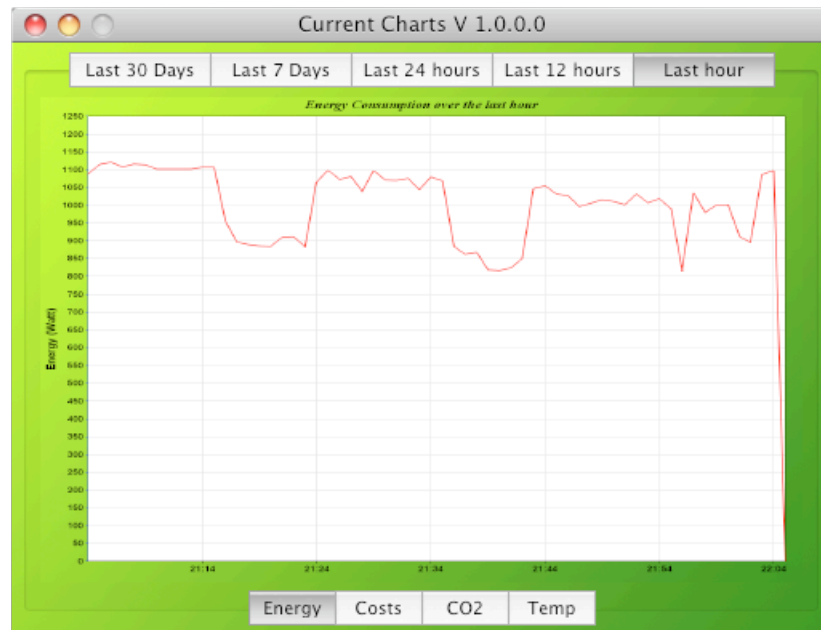
There are several ways you can display the information from your Current Cost Envi.

Select  Show Live Readings from the menu to see the information as displayed on the Envi. This real time screen looks like this:



Every value of this real time information is stored into a local database. Due to this you can look at the energy consumption over a specified period.


Just select  Show Charts from the menu to display this information:

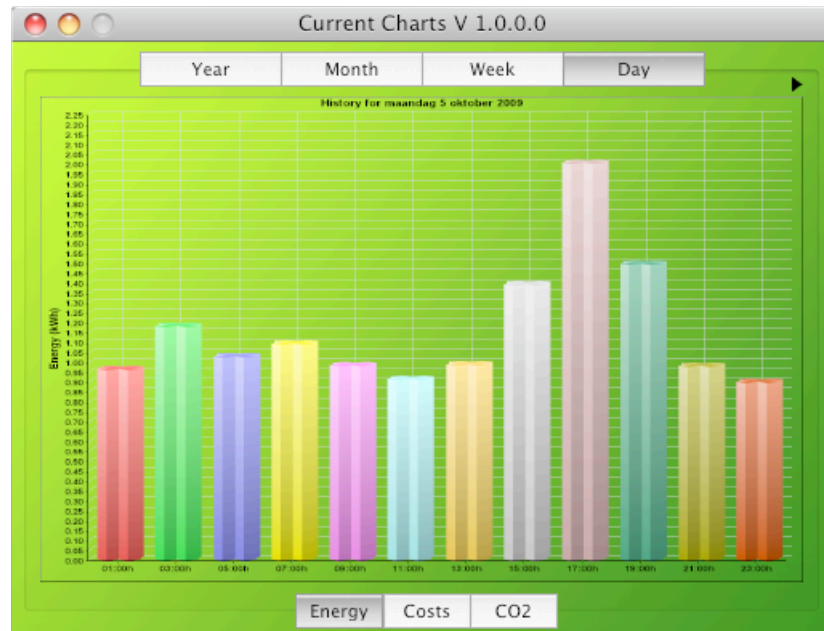


This screen will display the information about a period of time. At the top of the screen you can select the period, ranging from the last hour until the last 30 days. At the bottom you can select which values you want to have in the chart. This is either the energy consumption, the cost, the co2 production or the room temperature. If you want to have a better look at a chart, you can double click in it. The chart will then be displayed in a bigger window, which also allows you to print the chart.



Besides the real time information the Current Cost Envi also gathers its own historical data. Every two hours some information is send to the computer. Current Charts will also store this information and allows you to display it.

Select  Show History from the menu to enter the appropriate screen.



This first screen shows you the energy consumption of the last day. If you're using Current Charts for some days you will notice a little triangle at the top right corner. If you click on it a popup menu will show you other days Current Charts has information about. Just like the charts screen you can use the top buttons to select a different time frame. If on those screens other periods are available you'll see the little triangle again. With the bottom buttons you can switch between energy consumption, costs and CO2 production. If you double click on any screen a big window with the same chart will be shown. You can print the chart from that window.

Improvements

Current Charts is written because we wanted to have something like it. This means it is written to our own specifications. Thanks to our beta testers we got a lot of suggestions for new features and improvements. Most of them have been implemented. This doesn't mean Current Charts is a finished project. If you have suggestion on how we can improve the application or would like to have additional features, we would like to hear from you. Please join our support forum.

Registering and Support

The Current Charts is a shareware program. The demo version you've downloaded is not limited in any way, but will stop functioning at a specified date (shown in the main screen). If you like Current Charts you can get a registered version for only \$29.00. Just send your browser to [http://www.mrose.nl/ CurrentCharts/](http://www.mrose.nl/CurrentCharts/) for more details.

If you have any question or know ways to improve Current Charts we invite you to join the support forum at <http://forum.mrose.nl>

Have fun,

Bert Rozenberg

Current Charts
Written by Bert Rozenberg
(c) 2009, Mountain Rose Multi Media
All Rights Reserved