



# IP2Location™.NET Component User Manual



Developed by Hexasoft Development Sdn. Bhd.

Copyright © 2001-2008 IP2Location.com. All Rights Reserved.

Visit our Web site at  
<http://www.ip2location.com>

*~ Bringing Geography to the Internet ~*

# INTRODUCTION

**IP2Location™** is the solution for identifying the *country origin, region, city, latitude, longitude, ZIP code, ISP and domain name* of your site visitors in real-time by using IP address. This documentation provides detailed information to help you quickly get up to speed with our products and master it in no time at all.

Developers use this .NET component for projects related to:

- **Display native language and currency**
- **Redirect based on country**
- **Digital rights management**
- **Prevent password sharing and abuse of service**
- **Reduce credit card fraud**
- **Web log stats and analysis**
- **Auto-selection of country on forms**
- **Filter access from countries you do not do business with**
- **Geo-targeting for increased sales and click-through**

IP2Location™ .NET component is written for .NET Framework and optimized for Windows® operating system performance.

## SYSTEM REQUIREMENT

IP2Location™ .NET Component has been developed to run exclusively under Windows based machines with support for both WinForm and ASP.NET (for web form). This component required a local IP2Location™ database for lookup purpose. No Internet connection required to execute this component.

### Minimum Configuration Requirements

This section describes the minimum configuration requirements for a computer where the .NET Framework 1.1 or later redistributable package is to be installed. If the minimum requirements are not met, IP2Location™ setup file might block the installation of the redistributable package. Specifically, note that you cannot install the .NET Framework redistributable package on a computer running the Microsoft Windows 95 operating system.

### Minimum Platform Requirements

- Microsoft® Windows 98
- Microsoft® Windows 98 Second Edition
- Microsoft® Windows Millennium Edition (Windows Me)
- Microsoft® Windows NT 4 (Workstation or Server) with Service Pack 6a
- Microsoft® Windows 2000 (Professional, Server, or Advanced Server) with the latest Windows service pack and critical updates available from the Microsoft Security Web site.
- Microsoft® Windows XP (Home or Professional)
- Microsoft® Windows Server 2003 family

## Minimum Configuration Requirements

Scenario	CPU Required	RAM Required
Client	Pentium 90 MHz*	32 MB**
Server	Pentium 133 MHz*	128 MB**

\* Or the minimum CPU required running the operating system, whichever is higher.

\*\* Or the minimum RAM required running the operating system, whichever is higher.

## Quick Start Guide

In this document, you will go through these basic steps to use IP2Location™ .NET component:

1. Download and installing IP2Location .NET Component
2. Test your .NET Component installation
3. Start using IP2Location™ in your projects
4. Purchase license to remove random 5 second delay in demo version
5. Update IP2Location™ Component database

Note: For demo version, you will have a random 5-second delay. Registered version has unlimited real-time query without delay.

## 1. DOWNLOAD AND INSTALLING IP2LOCATION .NET COMPONENT

### 1.1. Download Setup File

Please use the following URL to download the latest IP2Location™ .NET Component together with sample database.

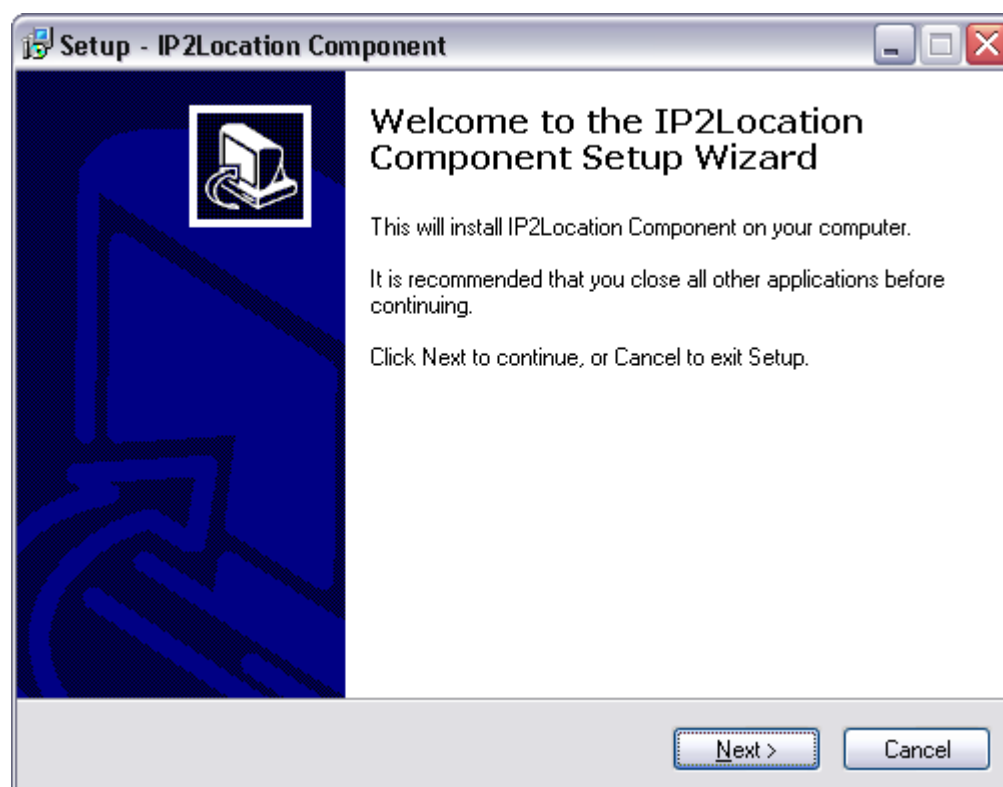
<http://www.ip2location.net/download/IP2LocationDotNetComponent.ZIP>

### 1.2. Component Installation

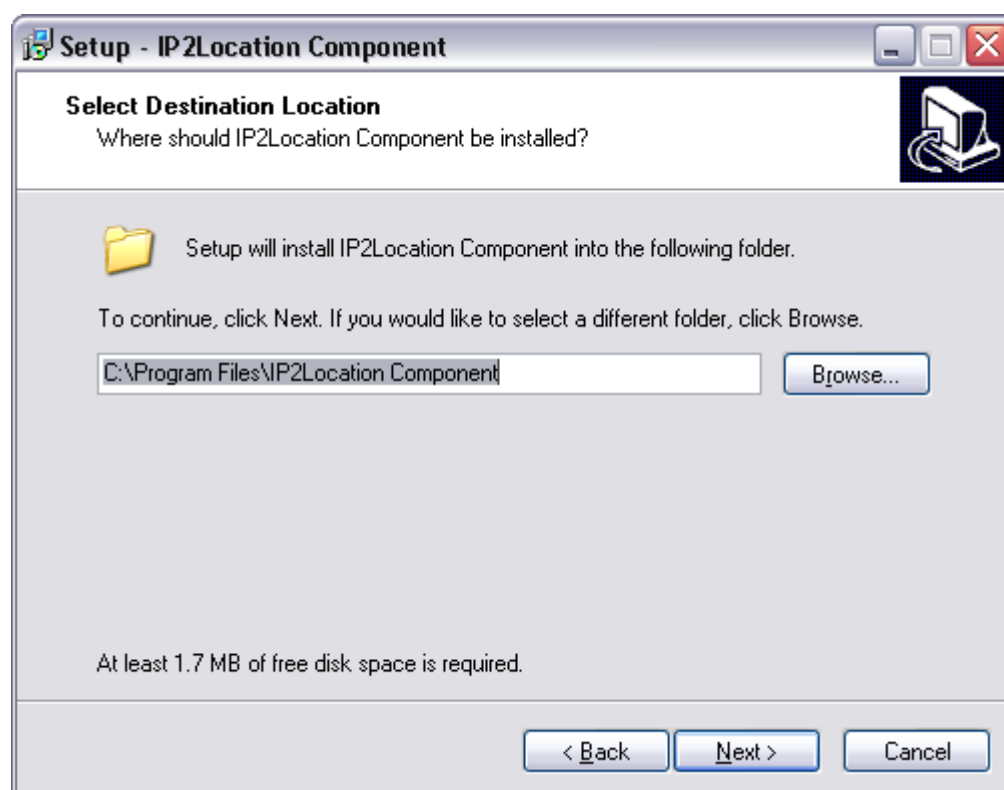
Installing the IP2Location .NET component system is very easy. You just need to execute the "Setup.exe".

General steps in installing IP2Location™ .NET component.

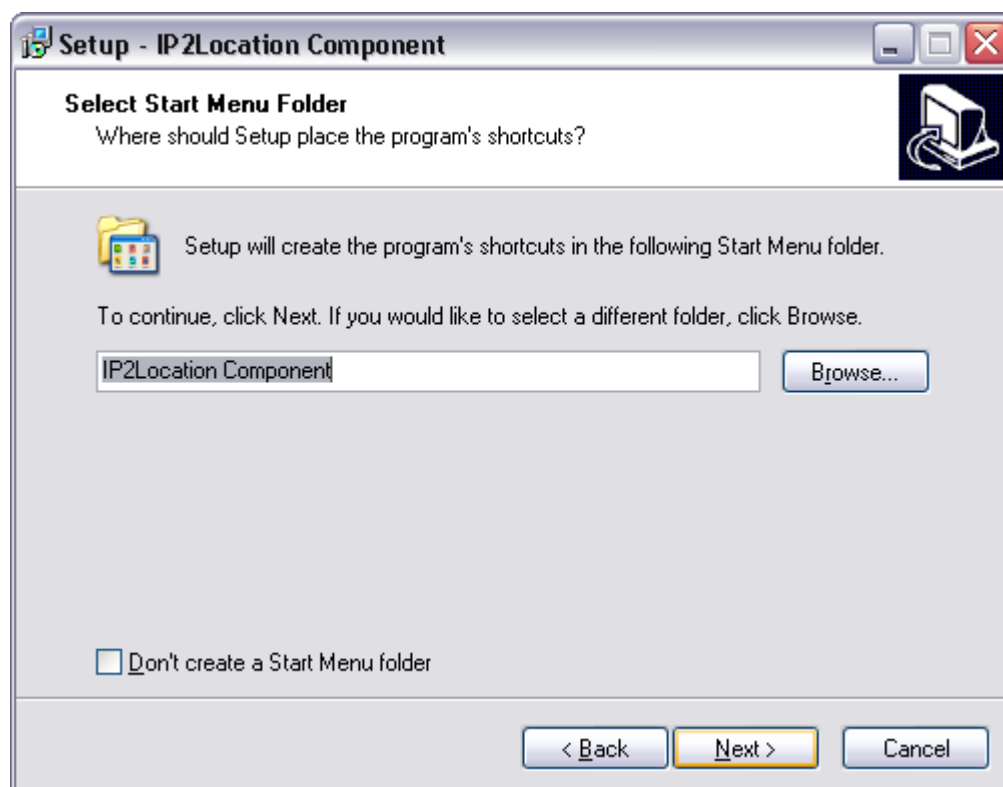
1. Unzip the "IP2LocationDotNetComponent.ZIP" into a temporary directory.
2. Execute the "Setup.exe".
3. Click Next button to continue.



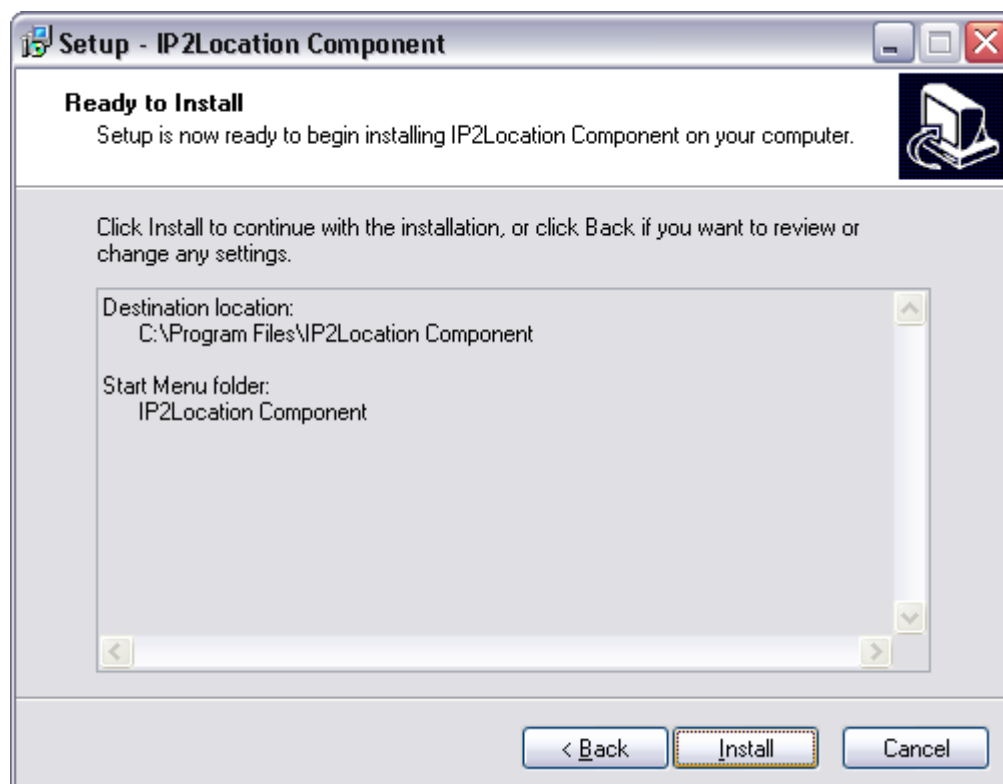
4. Select the path you wish to install. After selected click Next button to continue.



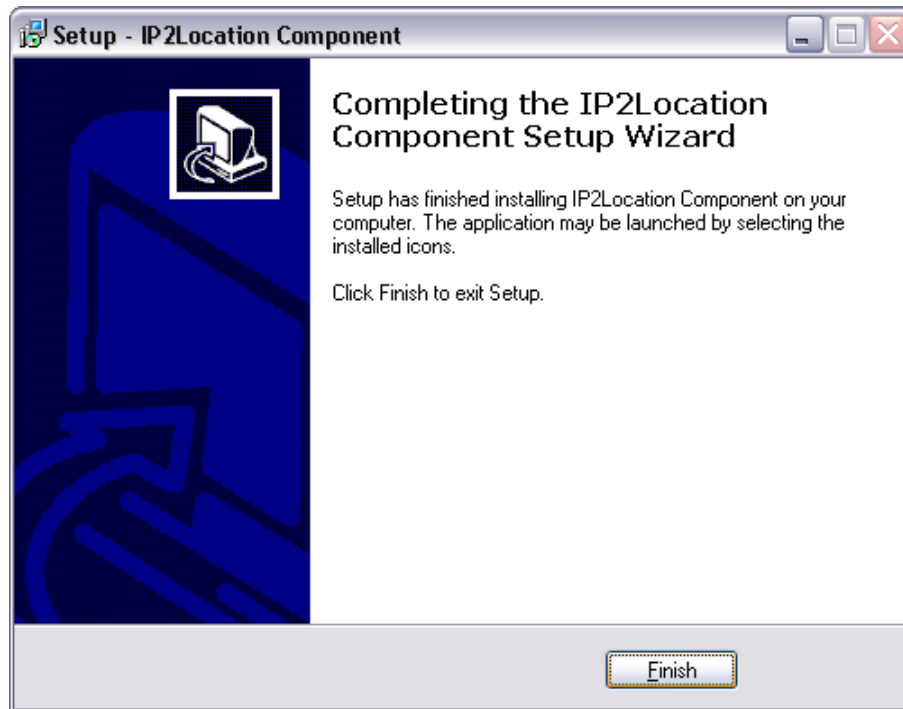
- Click Next button to continue.



- Click Install button to start the installation.



7. Click Finish button to complete the installation



Note: ASP.NET Applications can be fully deployed through FTP. While this application comes with a DLL, you don't need to access the server in order to register (using REGSVR) it as it was required with previous ASP applications.

Just make sure to place the application's DLL in the /bin folder of your web site. Your hosting provider will be able to provide you with more information about the bin folder. **DO NOT TRY TO REGISTER THE DLL USING REGSVR.** Just place a copy of the DLL inside the /BIN folder at the root of your web site. If there is no /BIN folder at the root of your site, create it and place the DLL in there.

## 2. TESTING IP2LOCATION™ .NET COMPONENT

### 2.1 Folders and Files Structure

You should find the following folders and files in the installation directory. The default installation directory is C:\Program Files\IP2Location Component.

- \IP2Location.dll
- \IP2Location\_dotNET\_Component.pdf
- \License\_Agreement.TXT
- \x64\IP2Location.dll
- \Database\IP-COUNTRY-SAMPLE.BIN
- \SampleCodes\dotNET1.1\WinForm\VBnet\
- \SampleCodes\dotNET1.1\WinForm\C#\
- \SampleCodes\dotNET1.1\WebForm\VBnet\
- \SampleCodes\dotNET1.1\WebForm\C#\
- \SampleCodes\dotNET2.0\_3.0\_3.5\WinForm\VBnet\
- \SampleCodes\dotNET2.0\_3.0\_3.5\WinForm\C#\
- \SampleCodes\dotNET2.0\_3.0\_3.5\WebForm\VBnet\
- \SampleCodes\dotNET2.0\_3.0\_3.5\WebForm\C#\

## 2.2 Component Testing using WinForm

For desktop-based sample applications, please open the project or solution file to rebuild and execute the application.

Sample WinForm Written in VB.NET  
/SampleCodes/WinForm/VBnet/

Sample WinForm Written in C#  
/SampleCodes/WinForm/C#/

## 2.3 Component Testing using WebForm

For web-based sample applications, please copy the sample to a web directory that has configured to run web scripts. Then run these samples using your browser from local web server. Please make sure you have copied the IP2Location.DLL and sample database to the web application directory /bin.

Sample WebForm Written in VB.NET  
/SampleCodes/WebForm/VBnet/

Sample WebForm Written in C#  
/SampleCodes/WebForm/C#/

*\*Note: Please use x64\IP2Location.dll in 64bit machine.*

*\*Note: If you are getting this error "Attempted to load a 64-bit assembly on a 32-bit platform. Use ReflectionOnlyLoad() instead if trying to load for reflection purposes." Please disable "Enable 32-Bit Applications" in your IIS Application Pools.*

## 3. IMPLEMENTING IP2LOCATION™ .NET COMPONENT

### 3.1 IP2Location™ Objects Reference

Object: IP2Location.Component

Parameter	Description
IPDatabasePath	Set IP2Location™ database path. The component will use the database in the component directory by default.
IPLicensePath	Set license file path for component registration. The component will use the license key in the component directory by default.

Method	Description
IPQuery(ByVal _IPAddress As String)	Query IP address. This method returns results in IP2Location.IPResult object.

Object: IP2Location.IPResult

Parameter	Description
IPAddress	IP Address.
IPNumber	IP Address in decimal format.
CountryShort	Two-character country code based on ISO 3166.
CountryLong	Country name based on ISO 3166.
Region	Region or state name.
City	City name.
Latitude	City latitude.
Longitude	City longitude.
ZIPCode	United States ZIP code.
TimeZone	Time zone in UTC (Coordinated Universal Time)
InternetServiceProvider	Internet Service Provider (ISP) name.
DomainName	Internet domain name associated to IP address range.
NetSpeed	Internet Connection Speed (DIAL) DIAL-UP,(DSL) DSL/CABLE or(COMP) COMPANY
IDDCode	The IDD prefix to call the city from another country
AreaCode	A varying length number assigned to geographic areas for call between cities
Weather Station Code	Special code to identify the nearest weather observation station
Weather Station Name	Name of the nearest weather observation station
Status	Status code of query.

**\*Note :** The result will return a not supported field message if the field of the result is not supported by the current database.

Possible Status Code returned from a query.

Status Code	Description
OK	The query has successfully benn performed.
EMPTY_IP_ADDRESS	The IP address is empty.
INVALID_IP_ADDRESS	The format of the IP address is wrong.
MISSING_FILE	The IP address database is not found.

**\*Note :** You are advised to check the status parameter every time before retrieving the result.



### 3.2. Sample Codes in Visual Basic.NET (WinForm)

```
Imports IP2Location
...
Private Sub Query(ByVal strIPAddress As String)
    Dim oIPResult As New IP2Location.IPResult
    Dim oIP2Location As New IP2Location.Component
    Try
        If strIPAddress <> "" Then
            'Set Database Path
            'e.g. C:\Program Files\IP2Location\Database\IP-COUNTRY.BIN
            oIP2Location.IPDatabasePath = "C:\Program
            Files\IP2Location\Database\IP-COUNTRY-SAMPLE.BIN"
            'Set License Path
            'e.g. C:\Program Files\IP2Location\License.key
            oIP2Location.IPLicensePath = "C:\Program
            Files\IP2Location\License.key"
            oIPResult = oIP2Location.IPQuery(strIPAddress)
            Select Case oIPResult.Status
                Case "OK"
                    Me.txtIPResult.AppendText("IP Address: " & oIPResult.IPAddress
                    & vbNewLine)
                    Me.txtIPResult.AppendText("City: " & oIPResult.City &
                    vbNewLine)
                    Me.txtIPResult.AppendText("Country Code: " &
                    oIPResult.CountryShort & vbNewLine)
                    Me.txtIPResult.AppendText("Country Name: " &
                    oIPResult.CountryLong & vbNewLine)
                    Me.txtIPResult.AppendText("Postal Code: " & oIPResult.ZipCode
                    & vbNewLine)
                    Me.txtIPResult.AppendText("Domain Name: " &
                    oIPResult.DomainName & vbNewLine)
                    Me.txtIPResult.AppendText("ISP Name: " &
                    oIPResult.InternetServiceProvider & vbNewLine)
                    Me.txtIPResult.AppendText("Latitude: " & oIPResult.Latitude &
                    vbNewLine)
                    Me.txtIPResult.AppendText("Longitude: " & oIPResult.Longitude
                    & vbNewLine)
                    Me.txtIPResult.AppendText("Region: " & oIPResult.Region &
                    vbNewLine)
                    Me.txtIPResult.AppendText("TimeZone: " & oIPResult.TimeZone &
                    vbNewLine)
                    Me.txtIPResult.AppendText("NetSpeed: " & oIPResult.NetSpeed &
                    vbNewLine)
                    Me.txtIPResult.AppendText("IDD Code: " & oIPResult.IDDCode &
                    vbNewLine)
                    Me.txtIPResult.AppendText("Area Code: " & oIPResult.AreaCode &
                    vbNewLine)
                    Me.txtIPResult.AppendText("Weather Station Code: " &
                    oIPResult.WeatherStationCode & vbNewLine)
                    Me.txtIPResult.AppendText("Weather Station Name: " &
                    oIPResult.WeatherStationName & vbNewLine)
                Case "EMPTY_IP_ADDRESS"
                    MsgBox("IP Address cannot be blank.")
                Case "INVALID_IP_ADDRESS"
                    MsgBox("Invalid IP Address.")
                Case "MISSING_FILE"
                    MsgBox("Invalid Database Path.")
            End Select
        Else
            MsgBox("IP Address cannot be blank.")
        End If
    Catch ex As Exception
        MsgBox(ex.Message)
    Finally
        oIPResult = Nothing
        oIP2Location = Nothing
    End Try
End Sub
```

### 3.3 Sample Codes in C# (WinForm)

```

Using IP2Location;

...
private void Query(string strIPAddress)
{
    IP2Location.IPResult oIPResult = new IP2Location.IPResult();
    IP2Location.Component oIP2Location = new IP2Location.Component();
    try{
        if (strIPAddress != ""){
            //Set Database Path
            //e.g. C:\Program Files\IP2Location\Database\IP-COUNTRY.BIN
            oIP2Location.IPDatabasePath = @"C:\Program Files\IP2Location\Database\IP-
            COUNTRY-SAMPLE.BIN";
            //Set License Path
            //e.g. C:\Program Files\IP2Location\License.key
            oIP2Location.IPLicensePath = @"C:\Program Files\IP2Location\License.key";
            oIPResult = oIP2Location.IPQuery(strIPAddress);
            switch(oIPResult.Status.ToString()){
                case "OK":
                    this.txtIPResult.AppendText("IP Address: " + oIPResult.IPAddress + "\n");
                    this.txtIPResult.AppendText("City: " + oIPResult.City + "\n");
                    this.txtIPResult.AppendText("Country Code: " + oIPResult.CountryShort +
                    "\n");
                    this.txtIPResult.AppendText("Country Name: " + oIPResult.CountryLong +
                    "\n");
                    this.txtIPResult.AppendText("Postal Code: " + oIPResult.ZipCode + "\n");
                    this.txtIPResult.AppendText("Domain Name: " + oIPResult.DomainName +
                    "\n");
                    this.txtIPResult.AppendText("ISP Name: " +
                    oIPResult.InternetServiceProvider + "\n");
                    this.txtIPResult.AppendText("Latitude: " + oIPResult.Latitude + "\n");
                    this.txtIPResult.AppendText("Longitude: " + oIPResult.Longitude + "\n");
                    this.txtIPResult.AppendText("Region: " + oIPResult.Region + "\n");
                    this.txtIPResult.AppendText("Time Zone: " + oIPResult.TimeZone + "\n");
                    this.txtIPResult.AppendText("Net Speed: " + oIPResult.NetSpeed + "\n");
                    this.txtIPResult.AppendText("IDD Code: " + oIPResult.IDDCode + "\n");
                    this.txtIPResult.AppendText("Area Code: " + oIPResult.AreaCode + "\n");
                    this.txtIPResult.AppendText("Weather Station Code: " +
                    oIPResult.WeatherStationCode + "\n");
                    this.txtIPResult.AppendText("Weather Station Name: " +
                    oIPResult.WeatherStationName + "\n");
                    break;
                case "EMPTY_IP_ADDRESS":
                    MessageBox.Show("IP Address cannot be blank.");
                    break;
                case "INVALID_IP_ADDRESS":
                    MessageBox.Show("Invalid IP Address.");
                    break;
                case "MISSING_FILE":
                    MessageBox.Show("Invalid File Path.");
                    break;
            }
        }
        else {
            MessageBox.Show("IP Address cannot be blank.");
        }
    }
    catch(Exception ex){
        MessageBox.Show(ex.Message);
    }
    finally{
        oIPResult = null;
        oIP2Location = null;
    }
}

```

### 3.4 Sample Codes in Visual Basic.Net (WebForm)

```
Imports IP2Location

'''
Private Sub Query(ByVal strIPAddress As String)
    Dim oIPResult As New IP2Location.IPResult
    Dim oIP2Location As New IP2Location.Component
    Try
        If strIPAddress <> "" Then
            'Set Database Path
            'e.g. C:\Program Files\IP2Location\Database\IP-COUNTRY.BIN
            oIP2Location.IPDatabasePath = "C:\Program Files\IP2Location\Database\IP-COUNTRY-
            SAMPLE.BIN"

            'Set License Path
            'e.g. C:\Program Files\IP2Location\License.key
            oIP2Location.IPLicensePath = "C:\Program Files\IP2Location\License.key"
            oIPResult = oIP2Location.IPQuery(strIPAddress)
            Select Case oIPResult.Status
                Case "OK"
                    Me.txtIPResult.Text += "IP Address: " & oIPResult.IPAddress & vbNewLine
                    Me.txtIPResult.Text += "City: " & oIPResult.City & vbNewLine
                    Me.txtIPResult.Text += "Country Code: " & oIPResult.CountryShort &
                    vbNewLine
                    Me.txtIPResult.Text += "Country Name: " & oIPResult.CountryLong &
                    vbNewLine
                    Me.txtIPResult.Text += "Postal Code: " & oIPResult.ZIPCode & vbNewLine
                    Me.txtIPResult.Text += "Domain Name: " & oIPResult.DomainName & vbNewLine
                    Me.txtIPResult.Text += "ISP Name: " & oIPResult.InternetServiceProvider &
                    vbNewLine
                    Me.txtIPResult.Text += "Latitude: " & oIPResult.Latitude & vbNewLine
                    Me.txtIPResult.Text += "Longitude: " & oIPResult.Longitude & vbNewLine
                    Me.txtIPResult.Text += "Region: " & oIPResult.Region & vbNewLine
                    Me.txtIPResult.Text += "Time Zone: " & oIPResult.TimeZone & vbNewLine
                    Me.txtIPResult.Text += "Net Speed: " & oIPResult.NetSpeed & vbNewLine
                    Me.txtIPResult.Text += "IDD Code: " & oIPResult.IDDCode & vbNewLine
                    Me.txtIPResult.Text += "Area Code: " & oIPResult.AreaCode & vbNewLine
                    Me.txtIPResult.Text += "Weather Station Code: " &
                    oIPResult.WeatherStationCode & vbNewLine
                    Me.txtIPResult.Text += "Weather Station Name: " &
                    oIPResult.WeatherStationName & vbNewLine
                    Me.ResultLog(Me.txtIPResult.Text)
                Case "EMPTY_IP_ADDRESS"
                    Response.Write("IP Address cannot be blank.")
                    Me.ResultLog("IP Address cannot be blank.")
                Case "INVALID_IP_ADDRESS"
                    Response.Write("Invalid IP Address.")
                    Me.ResultLog("Invalid IP Address.")
                Case "MISSING_FILE"
                    Response.Write("Invalid Database Path.")
                    Me.ResultLog("Invalid Database Path.")
                Case Else
                    Me.ResultLog("Unknown.")
            End Select
        Else
            Response.Write("IP Address cannot be blank.")
        End If
    Catch ex As Exception
        Response.Write(ex.Message)
    Finally
        oIPResult = Nothing
        oIP2Location = Nothing
    End Try
End Sub
```

### 3.5 Sample Codes in C# (WebForm)

```

Using IP2Location;
...
private void Query(string strIPAddress){
    IP2Location.IPResult oIPResult = new IP2Location.IPResult();
    IP2Location.Component oIP2Location = new IP2Location.Component();
    try{
        if (strIPAddress != ""){
            //Set Database Path
            //e.g. C:\Program Files\IP2Location\Database\IP-COUNTRY.BIN
            oIP2Location.IPDatabasePath = @"C:\Program Files\IP2Location\Database\IP-COUNTRY-
            SAMPLE.BIN";

            //Set License Path
            //e.g. C:\Program Files\IP2Location\License.key
            oIP2Location.IPLicensePath = @"C:\Program Files\IP2Location\License.key";
            oIPResult = oIP2Location.IPQuery(strIPAddress);
            switch(oIPResult.Status.ToString()){
                case "OK":
                    this.txtIPResult.Text += "IP Address: " + oIPResult.IPAddress + "\n";
                    this.txtIPResult.Text += "City: " + oIPResult.City + "\n";
                    this.txtIPResult.Text += "Country Code: " + oIPResult.CountryShort + "\n";
                    this.txtIPResult.Text += "Country Name: " + oIPResult.CountryLong + "\n";
                    this.txtIPResult.Text += "Postal Code: " + oIPResult.ZipCode + "\n";
                    this.txtIPResult.Text += "Domain Name: " + oIPResult.DomainName + "\n";
                    this.txtIPResult.Text += "ISP Name: " + oIPResult.InternetServiceProvider +
                    "\n";
                    this.txtIPResult.Text += "Latitude: " + oIPResult.Latitude + "\n";
                    this.txtIPResult.Text += "Longitude: " + oIPResult.Longitude + "\n";
                    this.txtIPResult.Text += "Region: " + oIPResult.Region + "\n";
                    this.txtIPResult.Text += "Time Zone: " + oIPResult.TimeZone + "\n";
                    this.txtIPResult.Text += "Net Speed: " + oIPResult.NetSpeed + "\n";
                    this.txtIPResult.Text += "IDD Code: " + oIPResult.IDDCode + "\n";
                    this.txtIPResult.Text += "Area Code: " + oIPResult.AreaCode + "\n";
                    this.txtIPResult.Text += "Weather Station Code: " +
                    oIPResult.WeatherStationCode + "\n";
                    this.txtIPResult.Text += "Weather Station Name: " +
                    oIPResult.WeatherStationName + "\n";
                    break;
                case "EMPTY_IP_ADDRESS":
                    Response.Write("IP Address cannot be blank.");
                    break;
                case "INVALID_IP_ADDRESS":
                    Response.Write("Invalid IP Address.");
                    break;
                case "MISSING_FILE":
                    Response.Write("Invalid Database Path.");
                    break;
            }
        }
        else{
            Response.Write("IP Address cannot be blank.");
        }
    }
    catch(Exception ex){
        Response.Write(ex.Message);
    }
    finally{
        oIPResult = null;
        oIP2Location = null;
    }
}

```

## **4. Purchase IP2LOCATION™ .NET COMPONENT**

### **4.1 License Agreement**

A license is required for each machine the product is installed on, including development or staging machines. Please refer to the end of this document for the complete license agreement.

### **4.3 Purchase Instructions**

Proceed to our order page. Fill out the online form and choose the correct number of licenses. Once your order has been approved, you will receive your license file (License.Key) immediately through email. Save the license file to the same directory as IP2Location.dll in WinForm or /bin directory for WebForm to remove the random 5-second query delay.

Please visit <http://www.ip2location.com> for online order.

## **5. UPDATE COMPONENT DATABASE**

### **5.1 Update Component Internal Database**

The IP2Location™ .NET Component depends to an internal database for lookup purpose. All users with valid license will be allowed to download the monthly updates from the IP2Location™ download area during subscription period. To update, users need to replace the BIN database with the latest one from the download area. The component will use the latest database once the local copy has been updated. Please refer to the welcome email for more information regarding download updates and account information.

## 6. UPDATE OR UNINSTALL COMPONENT

### 6.1 Upgrade Component

To upgrade a new version of IP2Location database, you need to download and execute the new setup file.

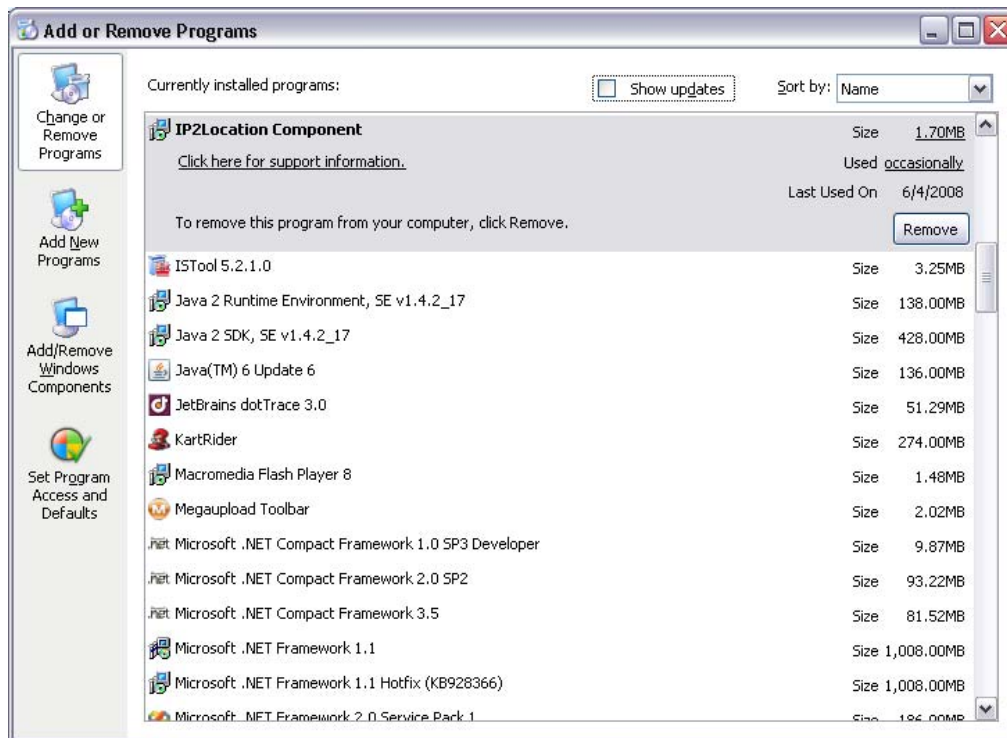
### 6.2 Update Database

To update the latest database, you can just replace the existing database binary file at IP2Location /bin binary folder.

### 6.3 Uninstall Component

To uninstall IP2Location™ .NET Component, you need to remove from add/remove programs

- 6.3.1 Start ► Control Panel ► Add/Remove Programs ► Select IP2Location ► Click Remove



- 6.3.2 Click Yes to confirm uninstall, click No to cancel uninstall.

## APPENDIX I: ISO3166 COUNTRY CODE

This table lists all valid ISO3166 two characters country codes that returns from IP2Location™ .NET component and explain the full country names for these country codes.

Country Code	Country Name
AD	ANDORRA
AE	UNITED ARAB EMIRATES
AF	AFGHANISTAN
AG	ANTIGUA AND BARBUDA
AI	ANGUILLA
AL	ALBANIA
AM	ARMENIA
AN	NETHERLANDS ANTILLES
AO	ANGOLA
AP	ASIA PACIFIC
AQ	ANTARCTICA
AR	ARGENTINA
AS	AMERICAN SAMOA
AT	AUSTRIA
AU	AUSTRALIA
AW	ARUBA
AZ	AZERBAIJAN
BA	BOSNIA AND HERZEGOWINA
BB	BARBADOS
BD	BANGLADESH
BE	BELGIUM
BF	BURKINA FASO
BG	BULGARIA
BH	BAHRAIN
BI	BURUNDI
BJ	BENIN
BM	BERMUDA
BN	BRUNEI DARUSSALAM
BO	BOLIVIA
BR	BRAZIL
BS	BAHAMAS
BT	BHUTAN
BV	BOUVET ISLAND
BW	BOTSWANA
BY	BELARUS
BZ	BELIZE
CA	CANADA
CC	COCOS (KEELING) ISLANDS
CD	CONGO, THE DEMOCRATIC REPUBLIC OF THE
CF	CENTRAL AFRICAN REPUBLIC
CG	CONGO

Country Code	Country Name
CH	SWITZERLAND
CI	COTE D'IVOIRE
CK	COOK ISLANDS
CL	CHILE
CM	CAMEROON
CN	CHINA
CO	COLOMBIA
CR	COSTA RICA
CS	CZECHOSLOVAKIA (FORMER)
CU	CUBA
CV	CAPE VERDE
CX	CHRISTMAS ISLAND
CY	CYPRUS
CZ	CZECH REPUBLIC
DE	GERMANY
DJ	DJIBOUTI
DK	DENMARK
DM	DOMINICA
DO	DOMINICAN REPUBLIC
DZ	ALGERIA
EC	ECUADOR
EE	ESTONIA
EG	EGYPT
EH	WESTERN SAHARA
ER	ERITREA
ES	SPAIN
ET	ETHIOPIA
EU	EUROPEAN UNION
FI	FINLAND
FJ	FIJI
FK	FALKLAND ISLANDS (MALVINAS)
FM	MICRONESIA, FEDERATED STATES OF
FO	FAROE ISLANDS
FR	FRANCE
FX	FRANCE, METROPOLITAN
GA	GABON
GB	GREAT BRITAIN
GD	GRENADA
GE	GEORGIA
GF	FRENCH GUIANA
GH	GHANA
GI	GIBRALTAR
GL	GREENLAND
GM	GAMBIA
GN	GUINEA
GP	GUADELOUPE
GQ	EQUATORIAL GUINEA
GR	GREECE



Country Code	Country Name
GS	SOUTH GEORGIA & SOUTH SANDWICH ISLANDS
GT	GUATEMALA
GU	GUAM
GW	GUINEA-BISSAU
GY	GUYANA
HK	HONG KONG
HM	HEARD ISLAND AND MCDONALD ISLANDS
HN	HONDURAS
HR	CROATIA
HT	HAITI
HU	HUNGARY
ID	INDONESIA
IE	IRELAND
IL	ISRAEL
IN	INDIA
IO	BRITISH INDIAN OCEAN TERRITORY
IQ	IRAQ
IR	IRAN, ISLAMIC REPUBLIC OF
IS	ICELAND
IT	ITALY
JM	JAMAICA
JO	JORDAN
JP	JAPAN
KE	KENYA
KG	KYRGYZSTAN
KH	CAMBODIA
KI	KIRIBATI
KM	COMOROS
KN	SAINT KITTS AND NEVIS
KP	KOREA, DEMOCRATIC PEOPLE'S REPUBLIC OF
KR	KOREA, REPUBLIC OF
KW	KUWAIT
KY	CAYMAN ISLANDS
KZ	KAZAKSTAN
LA	LAO PEOPLE'S DEMOCRATIC REPUBLIC
LB	LEBANON
LC	SAINT LUCIA
LI	LIECHTENSTEIN
LK	SRI LANKA
LR	LIBERIA
LS	LESOTHO
LT	LITHUANIA
LU	LUXEMBOURG
LV	LATVIA
LY	LIBYAN ARAB JAMAHIRIYA
MA	MOROCCO
MC	MONACO
MD	MOLDOVA, REPUBLIC OF

Country Code	Country Name
MG	MADAGASCAR
MH	MARSHALL ISLANDS
MK	MACEDONIA, THE FORMER YUGOSLAV
ML	MALI
MM	MYANMAR
MN	MONGOLIA
MO	MACAU
MP	NORTHERN MARIANA ISLANDS
MQ	MARTINIQUE
MR	MAURITANIA
MS	MONTSERRAT
MT	MALTA
MU	MAURITIUS
MV	MALDIVES
MW	MALAWI
MX	MEXICO
MY	MALAYSIA
MZ	MOZAMBIQUE
NA	NAMIBIA
NC	NEW CALEDONIA
NE	NIGER
NF	NORFOLK ISLAND
NG	NIGERIA
NI	NICARAGUA
NL	NETHERLANDS
NO	NORWAY
NP	NEPAL
NR	NAURU
NU	NIUE
NZ	NEW ZEALAND
OM	OMAN
PA	PANAMA
PE	PERU
PF	FRENCH POLYNESIA
PG	PAPUA NEW GUINEA
PH	PHILIPPINES
PK	PAKISTAN
PL	POLAND
PM	SAINT PIERRE AND MIQUELON
PN	PITCAIRN
PR	PUERTO RICO
PS	PALESTINIAN TERRITORY, OCCUPIED
PT	PORTUGAL
PW	PALAU
PY	PARAGUAY
QA	QATAR
RE	REUNION
RO	ROMANIA

Country Code	Country Name
RU	RUSSIAN FEDERATION
RW	RWANDA
SA	SAUDI ARABIA
SB	SOLOMON ISLANDS
SC	SEYCHELLES
SD	SUDAN
SE	SWEDEN
SG	SINGAPORE
SH	SAINT HELENA
SI	SLOVENIA
SJ	SVALBARD AND JAN MAYEN
SK	SLOVAKIA
SL	SIERRA LEONE
SM	SAN MARINO
SN	SENEGAL
SO	SOMALIA
SR	SURINAME
ST	SAO TOME AND PRINCIPE
SU	RUSSIAN FEDERATION
SV	EL SALVADOR
SY	SYRIAN ARAB REPUBLIC
SZ	SWAZILAND
TC	TURKS AND CAICOS ISLANDS
TD	CHAD
TF	FRENCH SOUTHERN TERRITORIES
TG	TOGO
TH	THAILAND
TJ	TAJIKISTAN
TK	TOKELAU
TM	TURKMENISTAN
TN	TUNISIA
TO	TONGA
TP	EAST TIMOR
TR	TURKEY
TT	TRINIDAD AND TOBAGO
TV	TUVALU
TW	TAIWAN, PROVINCE OF CHINA
TZ	TANZANIA, UNITED REPUBLIC OF
UA	UKRAINE
UG	UGANDA
UK	UNITED KINGDOM
UM	UNITED STATES MINOR OUTLYING ISLANDS
US	UNITED STATES
UY	URUGUAY
UZ	UZBEKISTAN
VA	HOLY SEE (VATICAN CITY STATE)
VC	SAINT VINCENT AND THE GRENADINES
VE	VENEZUELA

Country Code	Country Name
VG	VIRGIN ISLANDS, BRITISH
VI	VIRGIN ISLANDS, U.S.
VN	VIET NAM
VU	VANUATU
WF	WALLIS AND FUTUNA
WS	SAMOA
YE	YEMEN
YT	MAYOTTE
YU	YUGOSLAVIA
ZA	SOUTH AFRICA
ZM	ZAMBIA
ZW	ZIMBABWE

# IP2LOCATION™ .NET COMPONENT LICENSE AGREEMENT

**IMPORTANT-READ CAREFULLY:**

This License Agreement is a legal agreement between you (either an individual or a single entity) and Hexasoft Development Sdn. Bhd., owner of IP2Location™ trademark, ("Hexasoft" or "we") for the Hexasoft developed IP2Location™ .NET Component (hereafter referred to as the SOFTWARE PRODUCT) accompanying this License Agreement, which includes web service routines and data result(s). By exercising your rights to make and use copies of the SOFTWARE PRODUCT, you agree to be bound by the terms of this License Agreement. If you do not agree to the terms of this License Agreement, you may not use the SOFTWARE PRODUCT.

**GRANT OF LICENSE.**

This License Agreement grants the following rights: You are granted the right to use the SOFTWARE PRODUCT files on one computer in the Internet or Local Area Network ("LAN"). You may not use the SOFTWARE PRODUCT files on multiple computers without matching number of licenses.

**DESCRIPTION OF LIMITATIONS.**

You may not reverse engineer except and only to the extent that such activity is expressly permitted by applicable law notwithstanding this limitation. Without prejudice to any other rights, Hexasoft may terminate this License Agreement if you fail to comply with the terms and conditions of this License Agreement. In such event, you must destroy all copies of the SOFTWARE PRODUCT and all of its parts.

**COPYRIGHT.**

All title and copyrights in and to the SOFTWARE PRODUCT and any copies of the SOFTWARE PRODUCT are owned by Hexasoft. The SOFTWARE PRODUCT is protected by copyright laws and international treaty provisions.

**NO WARRANTIES.**

Hexasoft expressly disclaims any warranty for the SOFTWARE PRODUCT. The SOFTWARE PRODUCT and any related documentation is provided "as is" without warranty of any kind, either express or implied, including, without limitation, the implied warranties of merchantability or fitness for a particular purpose. The entire risk arising out of use or performance of the SOFTWARE PRODUCT remains with you.

**LIMITATION OF LIABILITY.**

Hexasoft's entire liability and your exclusive remedy under this Agreement shall not exceed fifteen dollars (US \$15.00).

**NO LIABILITY FOR CONSEQUENTIAL DAMAGES.**

In no event shall Hexasoft nor anyone else who has been involved in the creation, production, or delivery of the SOFTWARE PRODUCT be liable for any damages whatsoever (including, without limitation, damages for loss of business profits, business interruption, loss of business information, or any other pecuniary loss) arising out of the use of or inability to use this Hexasoft product, even if Hexasoft has been advised of the possibility of such damages. Because some states and jurisdictions do not allow the exclusion or limitation of liability for consequential or incidental damages, the above limitation may not apply to you.

**MISCELLANEOUS**

"IP2Location" is a trademark of Hexasoft Development Sdn. Bhd..

"Microsoft" is a registered trademark of Microsoft Corporation.

"Windows" is a registered trademark of Microsoft Corporation.

All other trademarks are the property of their respective owners.

Copyright © 2008 Hexasoft Development Sdn. Bhd., All Rights Reserved.

**Hexasoft Development Sdn. Bhd.**

1-2-15 Mayang Mall Kompleks,  
Jalan Mayang Pasir 1,  
11950 Bayan Baru,  
Pulau Pinang,  
Malaysia. Tel: (6)-04-640-2380  
Fax: (6)-04-640-2381  
Email: [sales@ip2location.com](mailto:sales@ip2location.com)