

# **User's Guide to INSTALLATION and LICENSE REGISTRATION**

**Book 2**

**KonSi  
Malmquist Index  
Software**

**[www.malmquist-index-software.com](http://www.malmquist-index-software.com)**

---

**User's Guide  
to  
INSTALLATION  
and  
LICENSE REGISTRATION**

## **Contents**

<b>1</b>	<b>TECHNICAL REQUIREMENTS .....</b>	<b>3</b>
<b>2</b>	<b>SOFTWARE FUNCTIONS .....</b>	<b>4</b>
<b>3</b>	<b>SOFTWARE MODULES.....</b>	<b>5</b>
3.1	STRUCTURE OF OUR SOFTWARE.....	5
3.2	LAUNCHING KONSİ – MALMQUIST INDEX SOFTWARE.....	6
3.3	LOGIC OF MODULES USAGE.....	7
<b>4</b>	<b>LICENSES FOR KONSİ – MALMQUIST INDEX SOFTWARE</b>	<b>9</b>
<b>5</b>	<b>DOWNLOADING KONSİ – MALMQUIST INDEX SOFTWARE.....</b>	<b>10</b>
<b>6</b>	<b>CONTENTS OF DOWNLOADED SOFTWARE ARCHIVE ...</b>	<b>11</b>
<b>7</b>	<b>INSTALLING KONSİ – MALMQUIST INDEX SOFTWARE</b>	<b>12</b>
7.1	INSTALLING OUR SOFTWARE UNDER WINDOWS 7 .....	12
7.2	Find the installed software on your computer .....	16
<b>8</b>	<b>HOW TO PAY FOR PURCHASED LICENSE .....</b>	<b>17</b>
<b>9</b>	<b>HOW TO REGISTER PURCHASED LICENSE OF OUR SOFTWARE UNDER WINDOWS 7 .....</b>	<b>18</b>
9.1	SOFTWARE REGISTRATION .....	18
9.2	SENDING REGISTRATION INQUIRY.....	20
9.3	SAVING ACTIVATED LICENSE KEY FILE ON YOUR COMPUTER .....	22
9.4	TESTING SUCCESSFUL LICENSE KEY FILE ACTIVATION.....	25

# **1 TECHNICAL REQUIREMENTS**

## **Operating system**

Our software may be used under **Windows 7 (only PC)**.

## **Internet**

Our software does not send any information to or receive it from the Internet.

## **Databases**

Our software does not use any specific database management systems.  
Our software uses .xml files to store the information about researched DEA models.

## **Source Data and Import**

To avoid any complexities of import for your real information, the source data must be prepared as a .csv file by using MS Excel. You may use Microsoft Excel to create a .csv file containing your source data.

## **Report files format**

Reports generated by KonSi – Malmquist Index Software are saved as .csv files. Files of this format are easily analyzed using Microsoft Excel tools.

## **Contacts**

You may use our support service only sending to us your e-mails. Our e-mail address is shown at our website [www.malmquist-index-software.com](http://www.malmquist-index-software.com)

## **2 SOFTWARE FUNCTIONS**

Our software has the following basic features:

### **Efficiency Research**

Our software provides you with easy-to-use tools for insighting into efficiency of researched units and calculation of Malmquist Index values.

### **Malmquist Index Methods**

You may use different methods of Malmquist index calculation:

- Fixed base Malmquist Index Method;
- Adjacent-base Malmquist Index method;
- Seasonal Malmquist Index method

**For more information** about the possibilities of our software, read "User's Guide for Malmquist Index research" ( see **User's\_Guide\_for\_Malmquist\_Index\_research.pdf** ).

### **Analysis of Malmquist Index Values**

Our software creates reports with calculated Malmquist index values, their components and CRS-VRS efficiencies. Created reports are saved as .csv files. You may open reports in Microsoft Excel to analyze calculated values using table tool and a pivot table. You may also use KonSi-Stepwise Regression Method Software to research relationship between Malmquist Index and independent parameters of DEA models.

### 3 SOFTWARE MODULES

#### 3.1 STRUCTURE OF OUR SOFTWARE

KonSi – Malmquist Index Software consists of three modules. Their functions are described below:

<b>1</b>	<b>Importer</b>	<p><b>Source data IMPORTER</b></p> <p>This utility imports source data to an .xml file. Source data should be stored in a .csv file. You may use MS Excel to create a .csv file.</p>
<b>2</b>	<b>Malmquist Index Calculator</b>	<p><b>Calculate Malmquist Index</b></p> <p>This program allows you to calculate Malmquist index values for your source data. The program allows you to do the following:</p> <ul style="list-style-type: none"> <li>• Select researched objects (DMUs);</li> <li>• Select input and output parameters of models;</li> <li>• Define type of DEA models;</li> <li>• Select a method of Malmquist index calculation.</li> <li>• Save calculated Malmquist Index values, their components and DEA efficiencies in .csv report files.</li> </ul>
<b>3</b>	<b>License Key Manager</b>	<p><b>Register working version of software</b></p> <p>This utility generates a license key file needed for the activation of our software. To activate the generated license key file, send it to us. After registration, the activated key file must be saved on your computer using License Key Manager utility.</p>

## 3.2 LAUNCHING KONSİ – MALMQUIST INDEX SOFTWARE

To launch our software, use commands shown on Figure 1.

The software modules are launched using the following commands:

- **1\_Import Source Data to xml file**
- **2\_Calculate Malmquist Index**
- **License Key Manager**

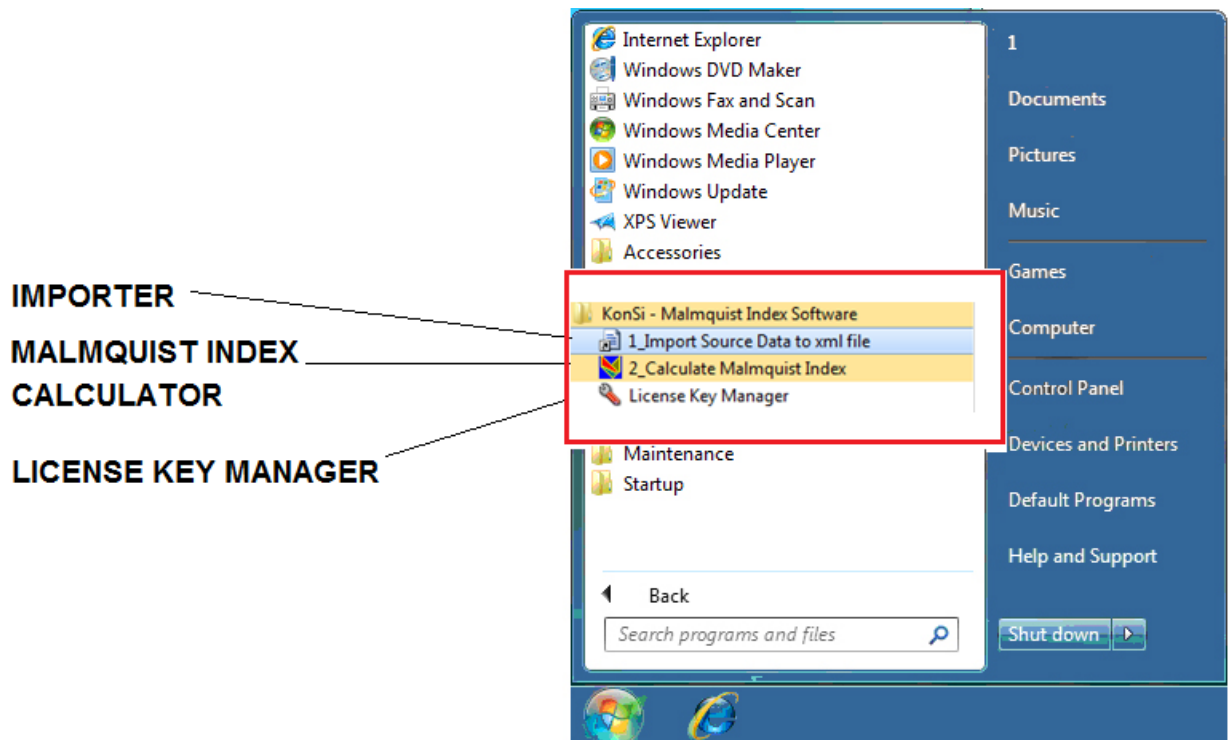


Figure 1 Commands for launching Malmquist Index Software modules

Before you start working with KonSi – Malmquist Index Software, you should register the working version of our program. When you research your own Malmquist Index problem, the commands for running software may be used according to the logic of research applied to current task.

### **3.3 LOGIC OF MODULES USAGE**

The logic of modules usage is shown on Figure 2 below.

#### **IMPORTER**

Source data are stored in a .csv file. Imported source data are saved as an .xml file transferred to Malmquist Index Calculator.

#### **MALMQUIST INDEX CALCULATOR**

The Malmquist Index Calculator module allows you calculate Malmquist index for your data and change settings of DEA models used. After Malmquist Index is calculated, the results are saved in 5 reports containing information about values of Malmquist index, its components and DEA efficiencies used during calculation.

For more information about the logic of software modules usage, read "User's Guide for Malmquist Index research"

(see **User's\_Guide\_for\_Malmquist\_Index\_research.pdf**).

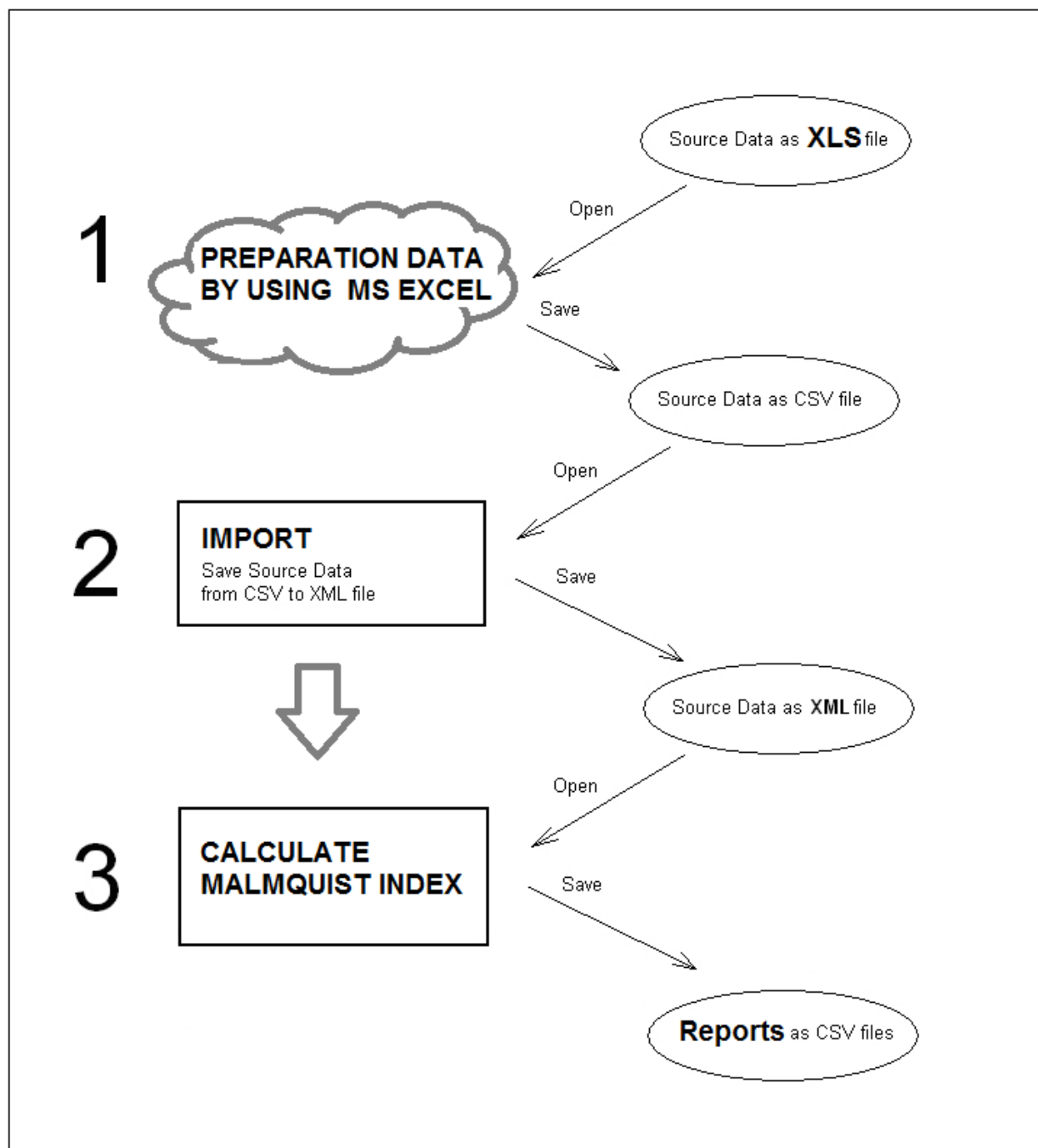


Figure 2 Logic of software modules usage



## **4 LICENSES FOR KONSI – MALMQUIST INDEX SOFTWARE**

You may use one of the following licenses for KonSi – Malmquist Index Software:

- Purchased license;
- Updated license.

### **PURCHASED LICENSE**

Purchased license allows you to use our software on only one computer. For information regarding the license price, visit our website [www.malmquist-index-software.com](http://www.malmquist-index-software.com).

For information about receiving a purchased license, see Section 8.

### **UPDATED LICENSE**

If you already have a purchased license and begin to work on another computer you may purchase an updated license to continue using our software. Price of updated license is less than price of purchased license which you buy for the first time.

## **5      DOWNLOADING KONSI – MALMQUIST INDEX SOFTWARE**

**To research your own Malmquist Index task,  
do the following steps:**

1. **Download** the archive containing the software and study materials.
2. **Unpack** the downloaded archive and save its files on your computer.
3. **Study** presentation and user's guides.
4. **Install** the software. For information regarding the installation process, see Section 7.
5. **Purchase** the working software license ( see Section 8). See the link "Buy now" at our website <http://www.malmquist-index-software.com> or at our affiliate sites. If you have any doubt, you may fill in the form ( see Section 9.2) and submit it to us before making the payment via credit card. In this case, you should indicate that you are going to make the payment and asking about the correctness of the registered form.
8. **Receive our letter** containing the instructions for your further actions.
9. **Register purchased version.** ( see Section 9.).
10. **Use** our software for your researches.

## 6 CONTENTS OF DOWNLOADED SOFTWARE ARCHIVE

When you download the archive from our website, you should create your own directory on your computer and save the archive to this directory.

Separate the contents of this archive.

The following information will be saved on your computer:

### **\software**

Files of our software

### **\example**

**Example of source data as .xls and .csv files**

**Real database for researched example**

**Folder with created reports** (There are five .csv report files opened in Microsoft Excel)

User's Guides:

**Read\_me.txt**

**Presentation of Malmquist Index Software** ( screenshots or movie );

**Book 1 User's Guide for Malmquist Index research.pdf**

**Book 2 User's Guide to INSTALLATION AND LICENSE REGISTRATION.pdf**

( this document )

**registration\_license\_form.pdf**

**registration\_license\_form.doc**

**registration\_license\_form.txt**

First of all you should study **presentation** of our Malmquist Index Software and also you may read **book1 User's Guide for Malmquist Index research.pdf** and you will learn more about the possibilities of our software and logic of working with it.

After that you should read **book2 User's Guide to INSTALLATION AND LICENSE REGISTRATION.pdf** and you will successfully install our software on your computer.

## **7 INSTALLING KONSİ – MALMQUIST INDEX SOFTWARE**

### **7.1 INSTALLING OUR SOFTWARE UNDER WINDOWS 7**

You will not meet any difficulties for installation of our software if your computer works under Windows 7.

**Warning!** You must have administrator privileges to install our software.

#### **Starting installation**

First of all, you should reinstall the earlier Malmquist Software software version. After opening the archive downloaded you should find the directory **\software**. Find the file named **SetupMalmIndex.msi** in this directory. Select this file by cursor and double-click this file. Installation of the software will start.

#### **Step-by-step installation**

KonSi – Malmquist Index Software installation is performed using standard installation wizard. To install Malmquist Index Software, do the following steps:

1. At the beginning of the installation process, you will see the starting window of the Setup Wizard (Figure 3). In this window, click Next to proceed.

2. On the next step (Figure 4), specify a folder where you would like to install KonSi – Malmquist Index Software. By default, this folder is as follows: %SYSTEMDRIVE%\Program Files (x86)\KonSi\Konsi – Malmquist Index Software, where

%SYSTEMDRIVE% stands for the drive where your system is installed (C: by default).

You may also indicate whether the program should be installed for every user of your computer (by clicking Everyone) or only for the current user (by clicking Just me). After that, click Next.

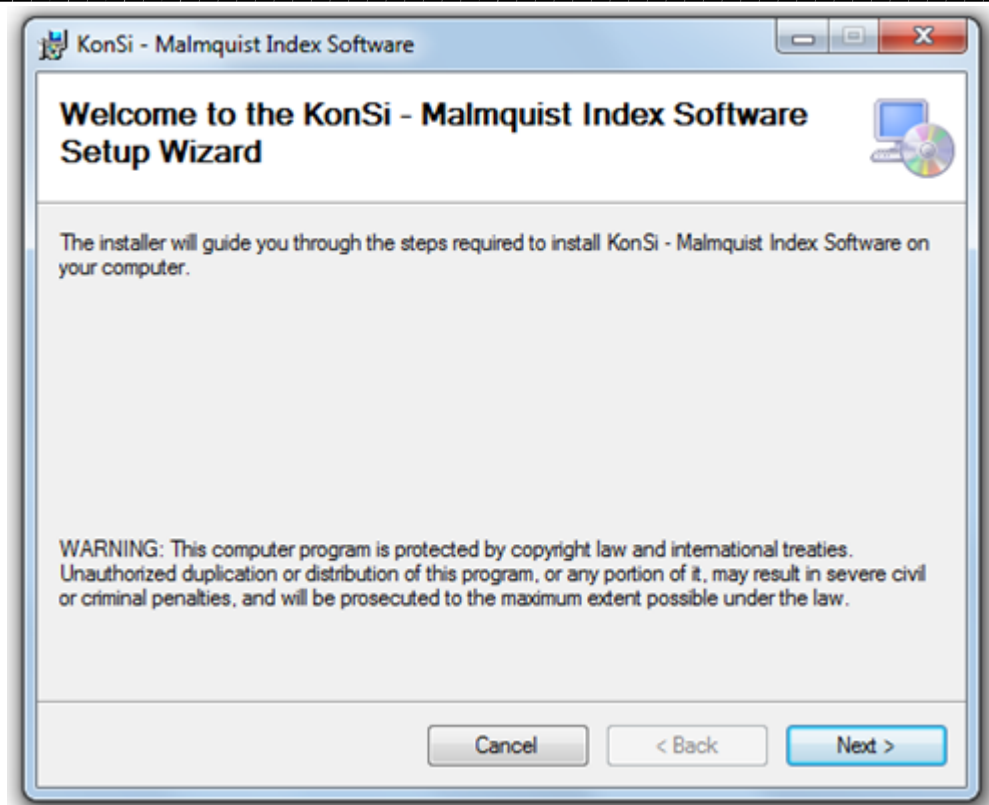


Figure 3 Starting window of KonSi – Malmquist Index Software Setup Wizard

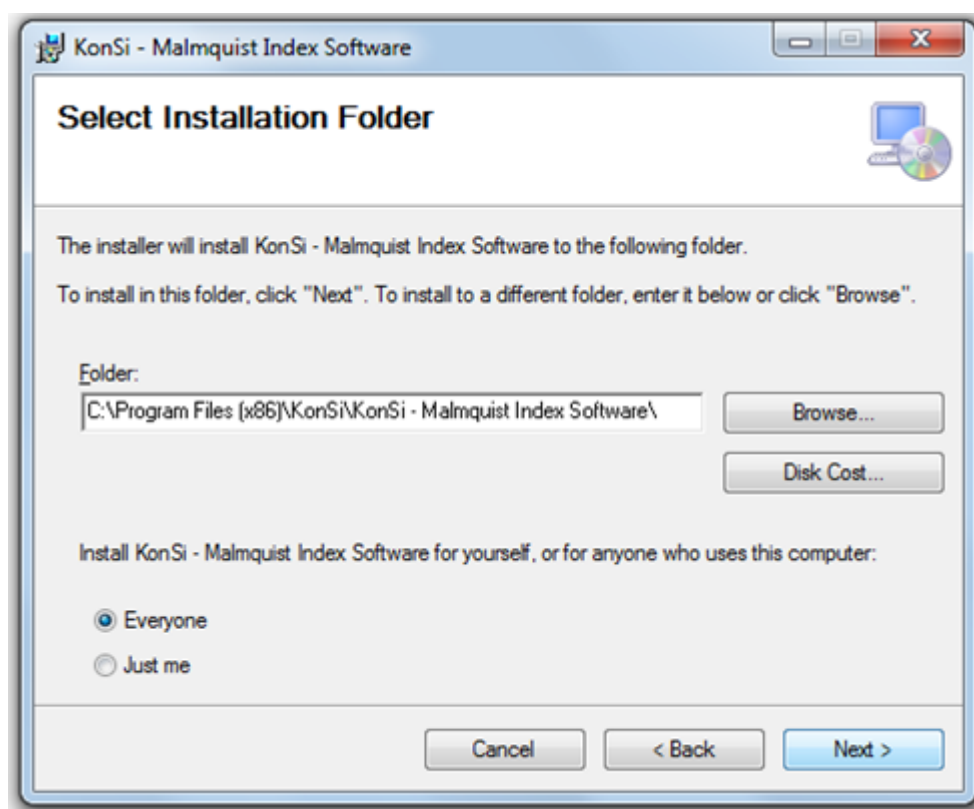


Figure 4 Setting a folder to install KonSi – Malmquist Index Software

3. On the next step (Figure 5), confirm that you would like to install KonSi – Malmquist Index Software on your computer. Click Next.
4. On the next step (Figure 6 - Figure 7), the installation process will start. If you are working under Windows 7, you will see the User Account Control request for allowing installation of our software. If you see this request, click Yes and wait until the installation is finished.

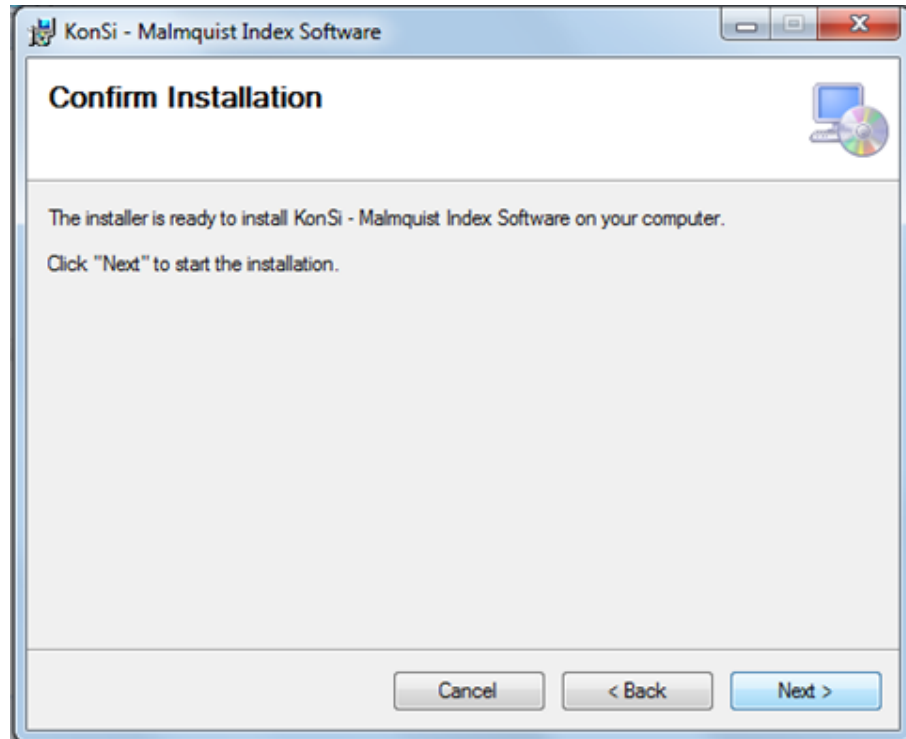


Figure 5 Setup confirmation window

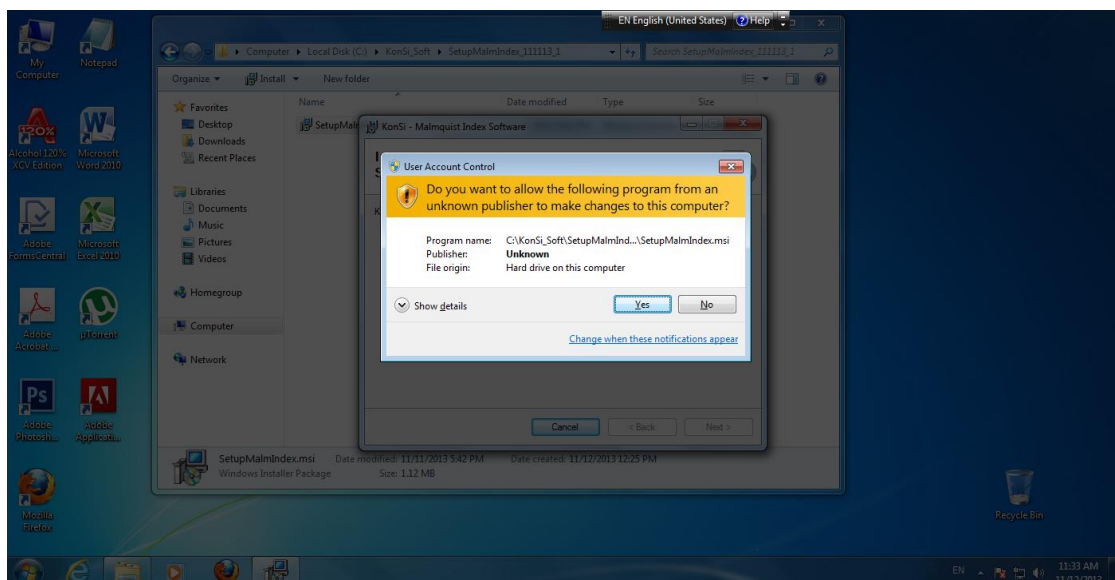


Figure 6 User Account Control request for allowing installation of KonSi – Malmquist Index Software

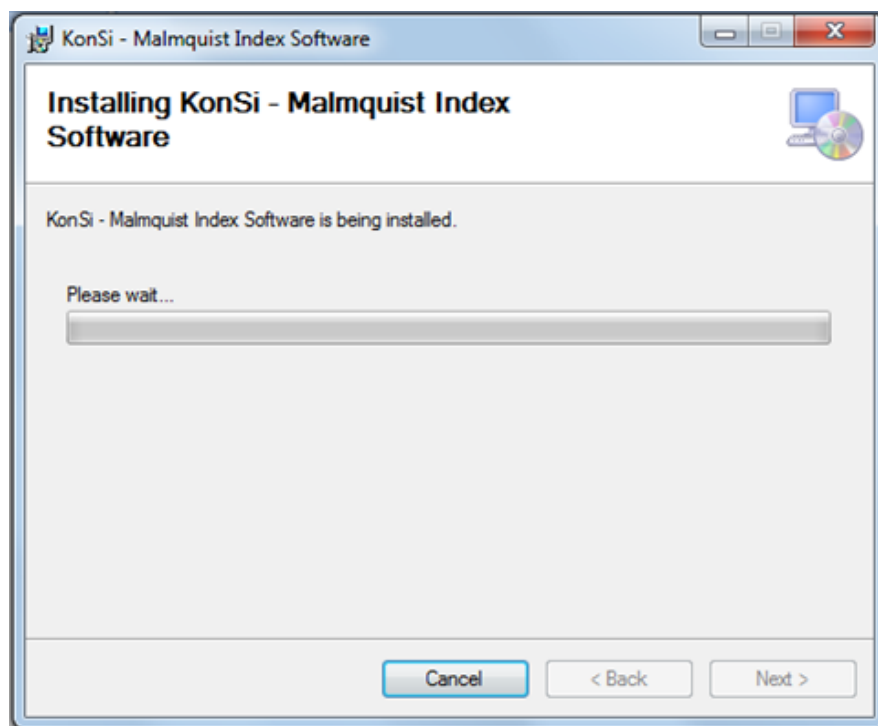


Figure 7 KonSi – Malmquist Index Software installation progress

5. On the final step (Figure 8), you will see the following message:  
**KonSi-Malmquist Index Software has been successfully installed.**  
Click Close to finish the installation.

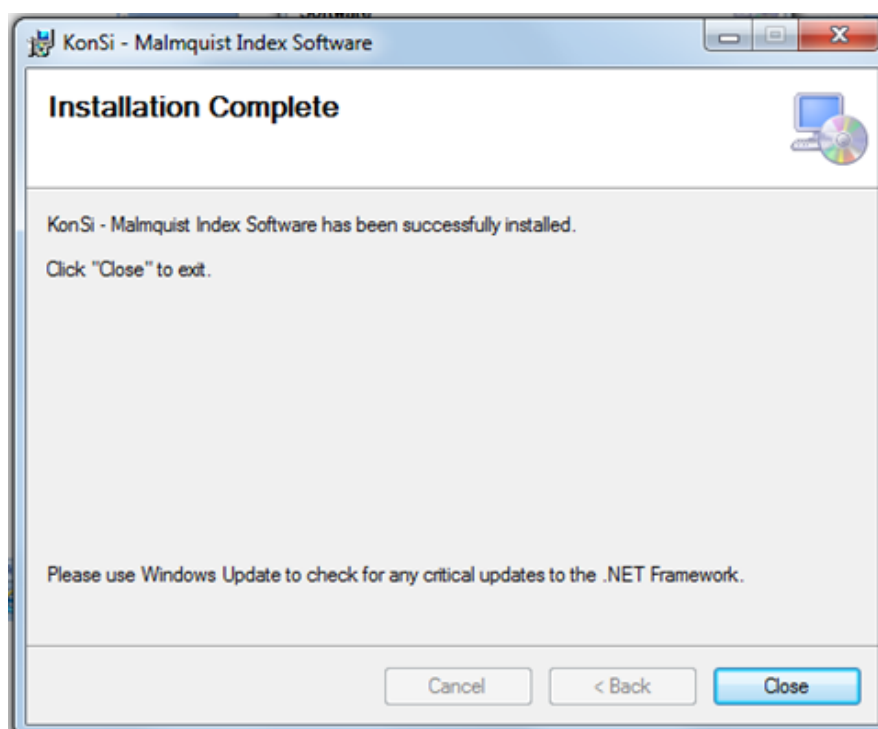


Figure 8 Window appearing on the final step in case of successful installation of KonSi – Malmquist Index Software

## 7.2 Find the installed software on your computer

After you successfully installed our software, you may find KonSi – Malmquist Index Software in the Start menu as shown on Figure 9 below.

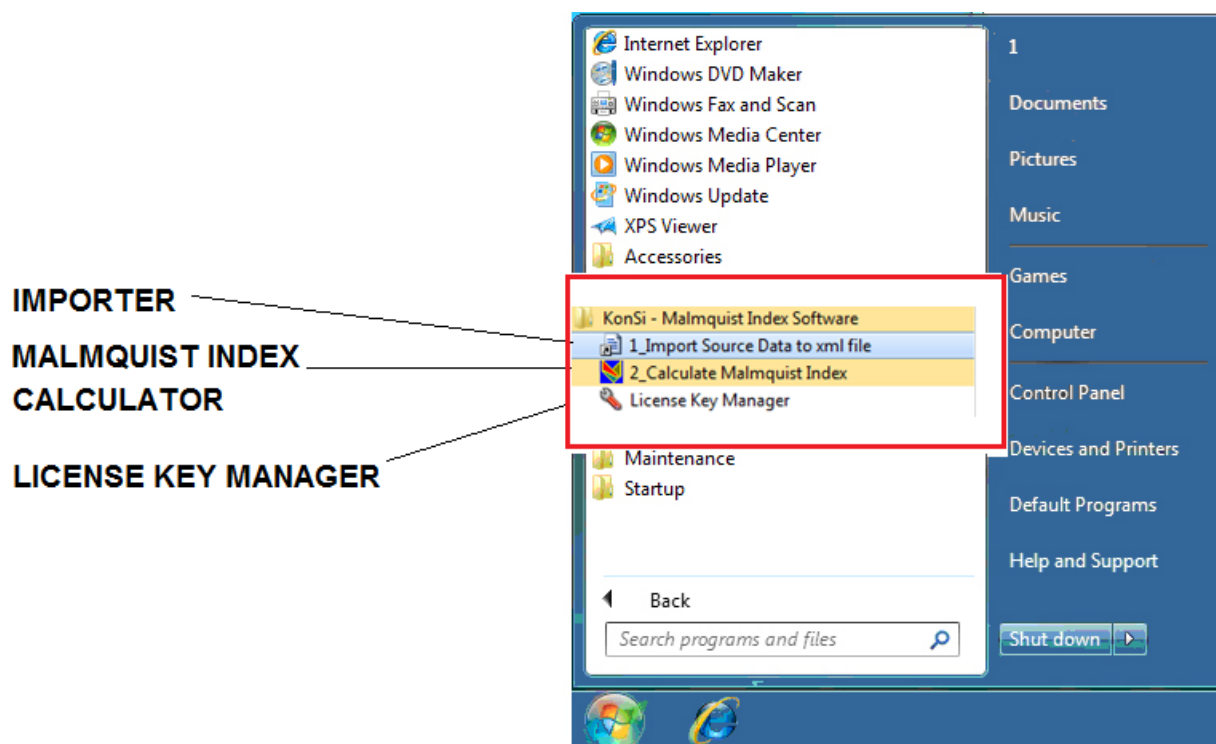


Figure 9 Start menu commands used to run our software on your computer under Windows 7

**If you install a purchased version,** you must register your purchased license. The procedure of license registration is described in Section 9. After registration of your purchased license, you may study examples contained in the downloaded archive.



## 8 HOW TO PAY FOR PURCHASED LICENSE

To research your real Malmquist Index task, you may purchase license according to our price. For the information regarding license price, visit [www.malmquist-index-software.com](http://www.malmquist-index-software.com) . You may use your VISA / MASTER CARD or WIRE TRANSFER. See the link "Buy now" on our website or on our affiliate sites.

When you have purchased the license you must receive the PURCHASED LICENSE. When we receive your money we will send you a letter by e-mail. Our letter will contain detailed instructions for you. Now we inform you about your future actions.

To receive your purchased license, you must do the following steps:

1. **Receive our letter** containing the instructions for you. To receive our letter you must use your e-mail box. If you have not received our letter, check your anti-spam settings and the Spam folder contents. You must use a real e-mail when you fill in the form for purchasing your license by VISA or MASTER CARD , etc.
2. **Download the working software.** Your letter contains the URL for downloading the archive with the purchased license software.
3. **Open downloaded archive** ( see Section 6 ).
4. **Install** the purchased license software ( see Section 7).
5. **Generate** the License Key file ( see Section 9).
6. **Fill in** the registration form on purchased license ( see Section 9.2).
7. **Send us** your e-mail with attached License Key file and the registration form.
8. **Receive** our letter. The letter will contain the activated license key file which corresponds to your purchased license.
9. **Save** the activated license key file on your computer ( see Section 9.3 ).
10. **Launch** our software and test successful license key file activation ( see Section 9.4 ).

## 9 HOW TO REGISTER PURCHASED LICENSE OF OUR SOFTWARE UNDER WINDOWS 7

To start studying our software or working with it you have to register your purchased license. The registration procedure is described in Sections 9.1 - 9.3.

### 9.1 SOFTWARE REGISTRATION

#### Step 1. Launch LICENSE KEY MANAGER

Launch License Key Manager utility. The command for running License Key Manager is shown on Figure 10.

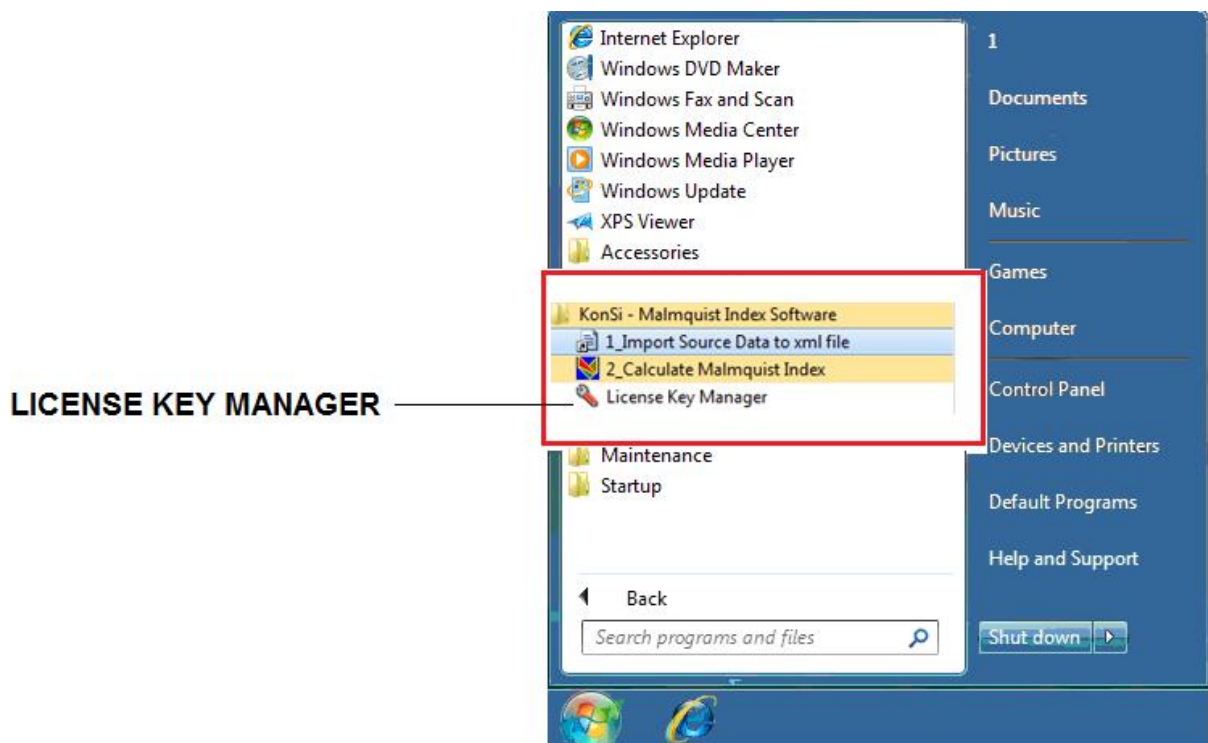


Figure 10 Start menu command for running License Key Manager

## Step 2. Create Unactivated License Key File

When License Key Manager utility is launched, you will see its main window shown on Figure 11. Click Generate Key File .

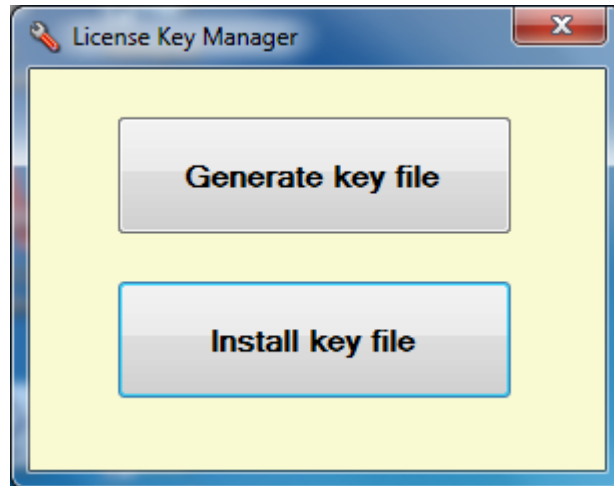


Figure 11 Main window of the License Key Manager utility

After you click Create Key File, you will see the form shown on Figure 12. You may select folder to save created key file. You must remember the folder name where the key file was saved. Do not change the file name. Click **Generate License Key File**.

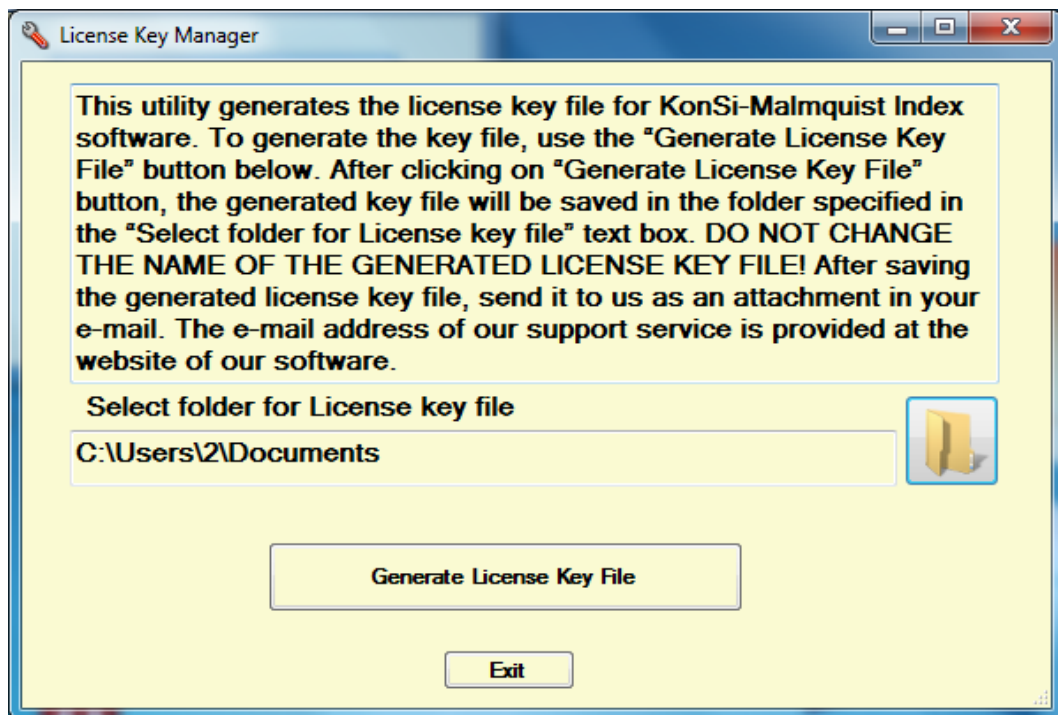


Figure 12 Generation of the unactivated License Key File

After you click Generate License Key File, you will see the form as shown on Figure 13. You must remember the path to key file. The generated license key file is NOT activated. To activate it, send this file to us for registration.

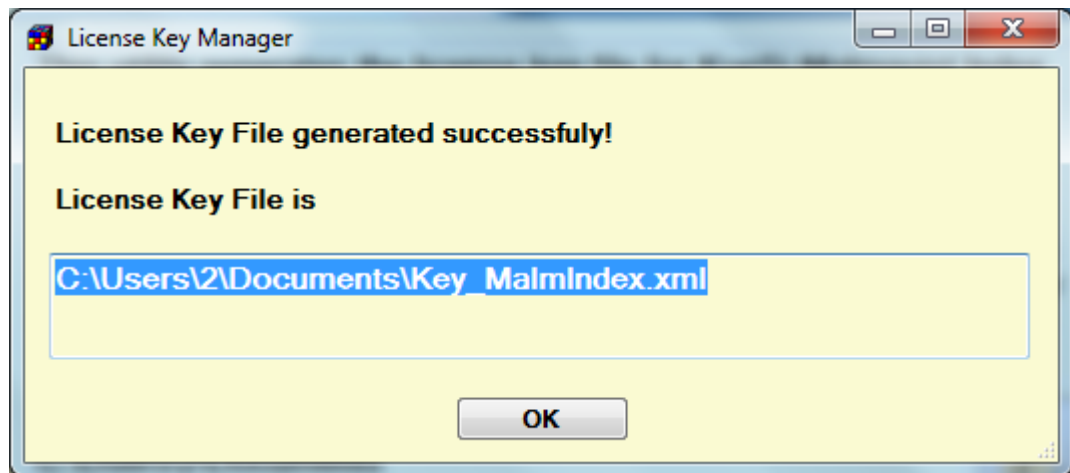


Figure 13 Message confirming successful license key file generation

## 9.2 SENDING REGISTRATION INQUIRY

To start using our software, you must receive your activated License Key File and save this file on your computer.

You must prepare the letter and send it to KonSi using the e-mail address at our website [www.malmquist-index-software.com](http://www.malmquist-index-software.com). To activate your license key file via e-mail, do the following steps:

1. **Fill in the following registration form** and save it as a separate file. The blank of this registration form is shown below and is allocated in the archive downloaded.
2. **Create your e-mail letter** with the attached files. You must attach two files to your e-mail letter as follows:
  - The first file is your REGISTRATION FORM,
  - The second file is the license key file named **Key\_MalmIndex.xml**

We will activate your license key file and send it back to you. You will receive the activated license key file within a few hours.

4. As you receive the activated license key file, **save it** on your computer using **Install key file** button in the License Key Manager window (Figure 11).

## REGISTRATION FORM FOR PURCHASED LICENSE ( MALMQUIST INDEX SOFTWARE )

I have read and agree with the purchased license for the "KONSI – MALMQUIST INDEX SOFTWARE" program. I will use it under condition that only one activated license key file is used on only one computer. When I begin to work on another computer I may purchase an updated license to continue using this software. Fill in below and send by e-mail to KonSi Ltd

[support@dea-analysis.com](mailto:support@dea-analysis.com)

Order Date: \_\_\_\_\_

User Name: \_\_\_\_\_

User Title, Working Status (Professor, PhD student, manager etc)

\_\_\_\_\_

User e-mail: \_\_\_\_\_

User website or personal homepage

http:// \_\_\_\_\_

User Address:

Country: \_\_\_\_\_

State: \_\_\_\_\_

City: \_\_\_\_\_

User Company or University:

\_\_\_\_\_

Department / Faculty:

\_\_\_\_\_

Company or University Website

http: // \_\_\_\_\_

Date When You have purchased the license: \_\_\_\_\_

Do You purchase our software for the first time? ☐ Yes ☐ No

Do You purchase our software as an update version? ☐ Yes ☐ No

What products have you purchased?:

Malmquist Index Software: \_\_\_\_\_ Unit Price \_\_\_\_\_ Qty \_\_\_\_\_ Amount

Please, write a some words about your Malmquist Index research – your purpose, number of researched objects ( dmu), application of results, a kind of business or other activity.

\_\_\_\_\_

### 9.3 SAVING ACTIVATED LICENSE KEY FILE ON YOUR COMPUTER

After sending the license key file to KonSi Ltd, you will receive the activated license key file. You must save the activated license key file on your computer using the instructions described below.

The KonSi letter received by e-mail contains the attached file. This attached file is the activated license key file. You must save this attached file and then move it to the folder of registered Malmquist Index Software on your computer.

To install the activated license key file, do the following steps:

1. Launch License Key Manager and click button **Install key file**.
2. Save the license key file on your computer. You may do it in one of two ways:
  - Allow all users of your computer to work with KonSi – Malmquist Index Software (the Install key file for all users on this computer option). In this case, the license key file is saved in the Program Data folder.
  - Allow only current user to work with KonSi – Malmquist Index Software. In this case, the license key file is saved to the Documents folder of the current user.

The dialog box offering options of license key file installation is shown on Figure 14.

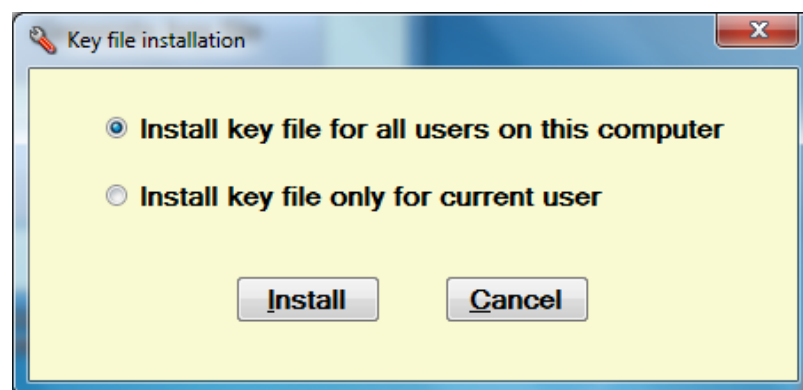


Figure 14 License key file installation options

3. Click Install and then navigate to the folder with the activated license key file in the Open dialog box. In the Open dialog box, select the activated key file and click Open as shown on Figure 15 below.

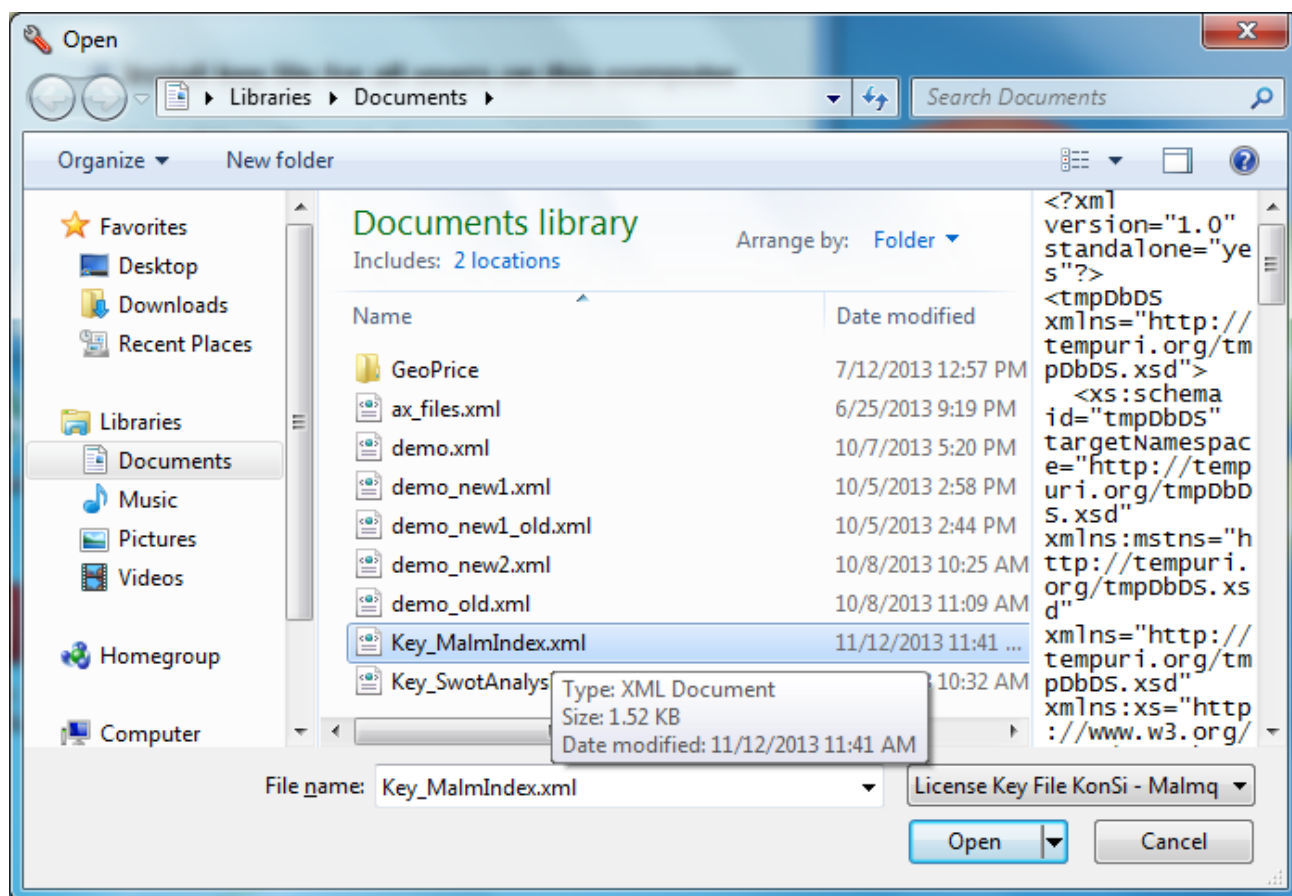


Figure 15 Finding the activated license key file

The selected key file is automatically saved to the folder assigned to selected option. You will see the message as shown on Figure 16.

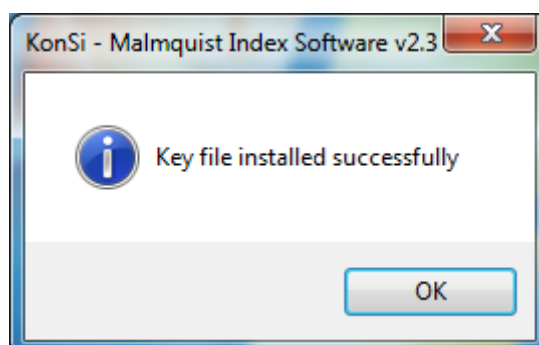


Figure 16 Message given in case of successful license key file installation

On Figure 17 it is shown that the activated key file was saved to the Program Data folder. This means that all users are allowed to work with the activated software.

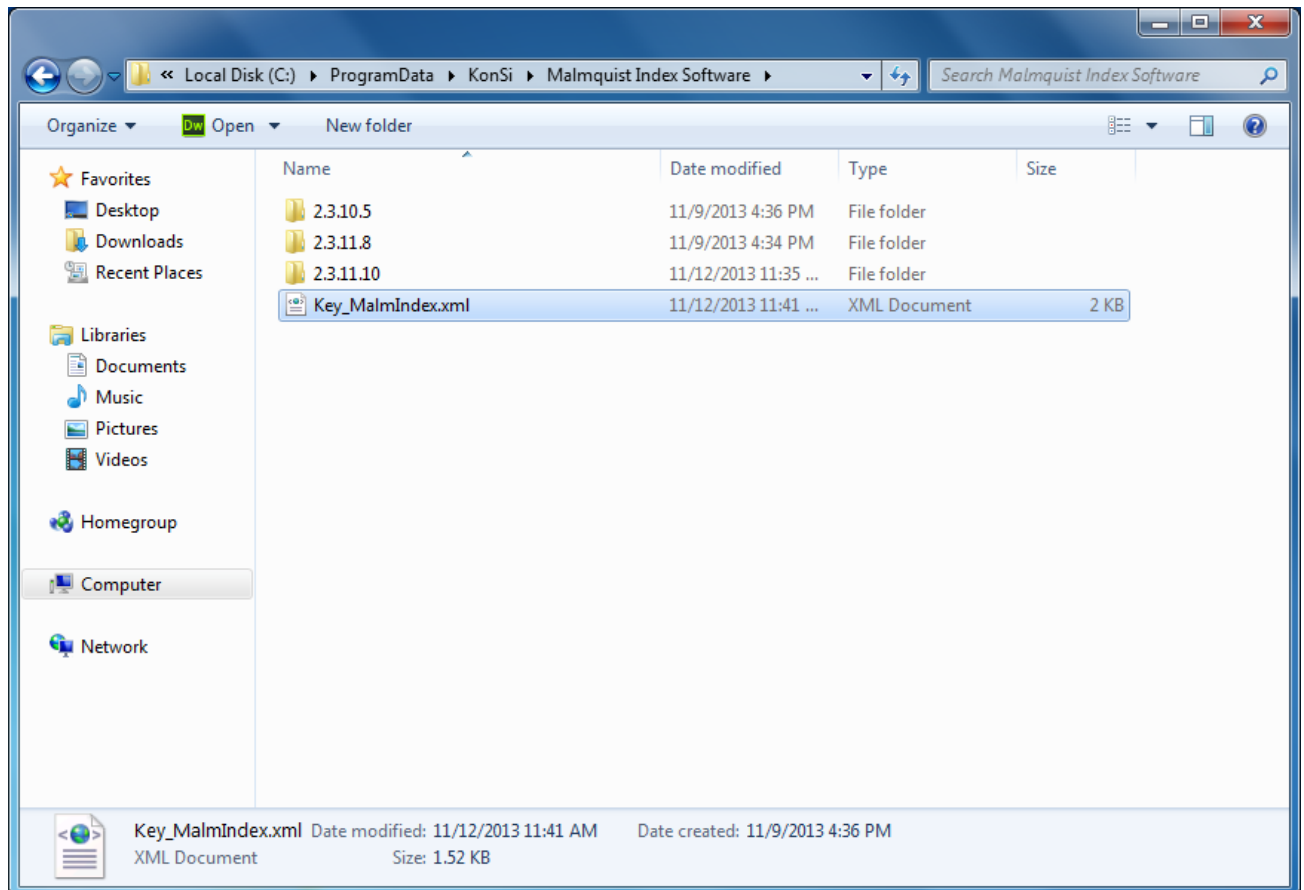


Figure 17 Location of the activated license key file when it is installed for all users



## 9.4 TESTING SUCCESSFUL LICENSE KEY FILE ACTIVATION

After you have completed the license key activation, you may check whether it was successful. When the activation is successfully completed, the File menu is enabled in the main window of Malmquist Index Calculator as shown on Figure 18.



Figure 18 Main window of Malmquist Index Calculator after successful license activation

### Working with KonSi – Malmquist Index Software

After successful license key activation, you may use KonSi – Malmquist Index Software for your research. **For more information**, read "User's Guide for Malmquist Index research" (see **User's\_Guide\_for\_Malmquist\_Index\_research.pdf**).