

# ScreenSharp

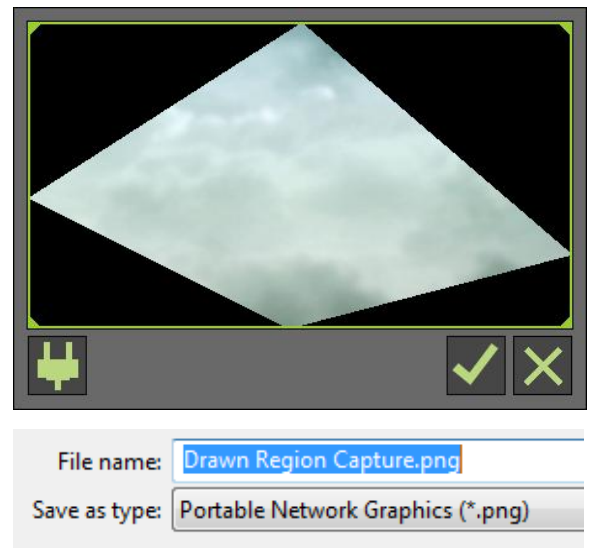
## User Manual

## General Info

This program was made to be as simple and easy to use as possible. You will be able to perform capture operations with ease and little distraction. The capture modes work in a way that they freeze the screen as soon as you enter the mode. This allows you to click without worrying about windows closing or opening. You can capture the screen using the main window buttons, using hot-keys, or using the command line interface.

Some modes will require that a mask will be applied to blank areas.

You can configure the mask to be transparent or a specific color (see Settings). Saving your files as a .PNG (Portable Network Graphics) is the best way to retain the transparency if used.



## Capture Region

Capture region will display a flexible rectangular or elliptical capture region where the captured bitmap will include everything inside but not including what is under the outline. You can right click to cancel.

| Hot-Key | Function           |
|---------|--------------------|
| Tab     | Cancel operation   |
| Escape  | Cancel operation   |
| Shift   | Keep region square |
| Ctrl    | Move region        |

**Region capture may not work properly on slower machines**

## Capture Elliptical Region

Capture elliptical region is the same as the normal capture region except the outlining is elliptical as well the program will apply a corresponding elliptical mask to the output bitmap. You can configure the mask (see settings).

## Capture Selected Windows

Capture selected windows will allow you to select desktop and child windows to capture.

| Hot-Key | Function                                       |
|---------|--|
| Tab     | Cancel operation                               |
| Escape  | Cancel operation                               |
| Ctrl    | Capture multiple windows (Hold while clicking) |
| Left    | Select previous screen                         |
| Right   | Select next screen                             |

## Capture All Screens

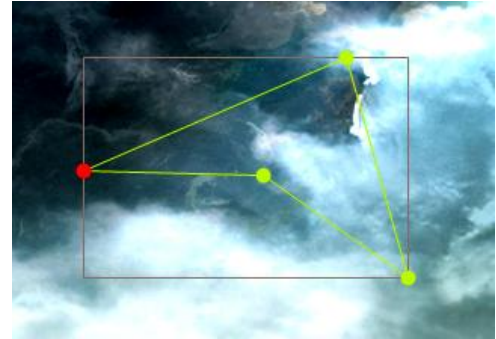
This will capture all screens of your display (as they appear) as one large bitmap. Blank space will be filled with black.

## Capture Full-Screen

This will capture a selected screen. A screen will be either the working area of a display or the display itself. To capture the entire screen, you will often have to hover the mouse over the taskbar so it is out of the working area.

## Capture Drawn Region

This will capture a user drawn region. Just like elliptical capture, a configurable mask will be applied to the blank areas. The drawn area consist of nodes (Visible vertices). The start node will be red. All other nodes will be the outline color (specified in settings, default is "YellowGreen"). When the cursor is over one of the nodes, it will turn white. You can then hold down the left mouse button to drag the node(s) about.

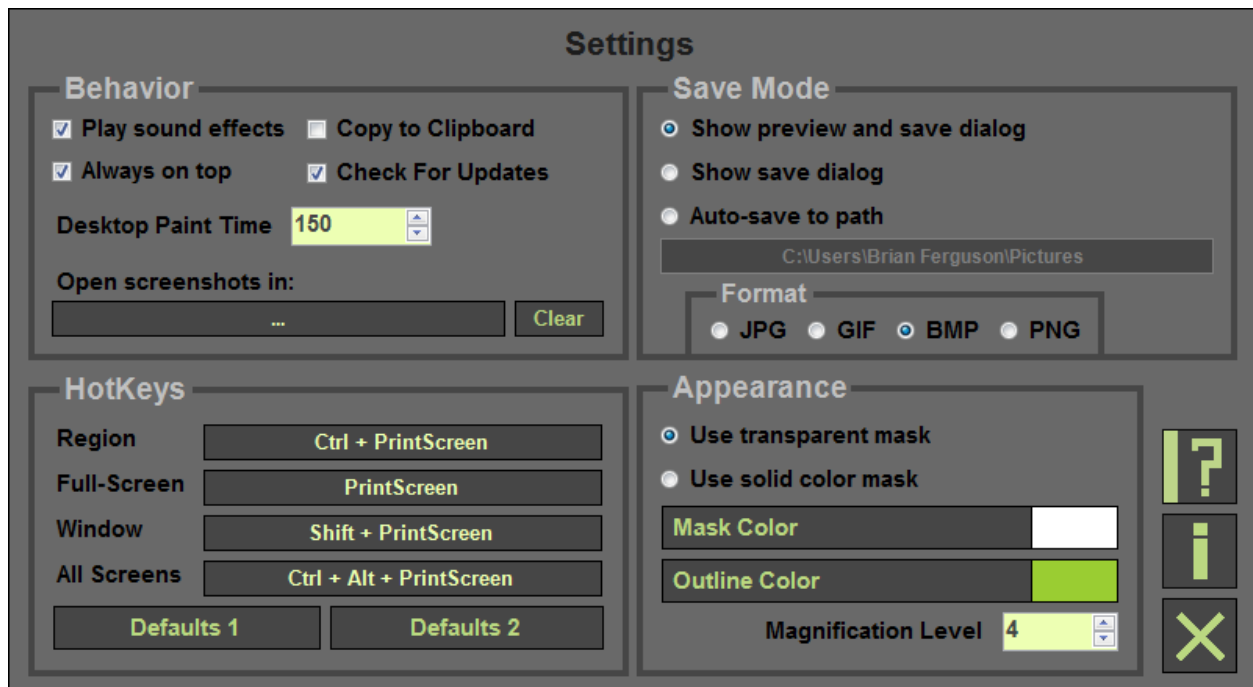


You can cancel this operation by right-clicking

| Hot-Key   | Function                             |
|-----------|--------------------------------------|
| Tab       | Cancel operation                     |
| Escape    | Cancel operation                     |
| Ctrl      | Drag all nodes (Hold while dragging) |
| Delete    | Remove last placed node              |
| Backspace | Remove last placed node              |

## Settings

Settings will allow you to configure the program. It is also where you will find the Info window and a link to the "User Manuel". Each window user will have their own settings. All settings will be applied when you exit the Settings window. Take a look at the layout before you continue reading.



**Behavior:** Here you can change how the program behaves. You can open screenshots in a specified program after the capture has been saved to file.

*Play Sound Effects - Disable/Enable sound effects.*

*Copy To Clipboard - Copies bitmap data to clipboard so you can paste the image in programs like Photoshop.*

*Always On Top - Keeps the main window on top of other windows.*

*Check For Updates - Automatically check for updates every 5 app uses. You will only be notified if a newer version is available.*

*Desktop Paint Time - Adjust the desktop paint time. The paint time is in milliseconds. It specifies how long to wait before freezing the screen. If the wait time is too short, the main window may not have time to hide. If it is too long, the screenshot operations will have a delay. On a high performance machine, you should be able to set this to 1.*

**Hot-Keys:** Hot-keys will allow you to use capture modes when the application is minimized and or does not have focus. There are two defaults. The first default will be less likely to conflict with other apps and their hot-keys. But they may be hard to remember. The second defaults (as shown) will be easier to remember but are common and may conflict with other application hot-keys. If a hot-key can not engage, the program will let you know.

## The hot-key picker controls cannot accept reserved keys at this time.

*Save Mode: The save mode specifies how you would like to proceed after capturing the screen.*

*Show preview And save dialog - This is the default behavior and will show first; the preview, and then the save file dialog.*

*Show save dialog - Shows only the windows save file dialog.*

*Auto-save to path - Automatically save the screenshot to the specified path. If a "My Pictures" folder is found then that will be the default.*

*Format - The file format to save the image as when auto-saving.*

## Appearance: The look and feel of the application.

*Use transparent mask - Apply transparency to the screenshots with blank areas.*

*Use solid color mask - Apply solid color to the screenshots with blank areas.*

*Mask Color - Pick the solid mask color for blank areas (only applies when using solid color masks).*


*Outline Color - Pick the outline color of all dynamic outlines in the application.*

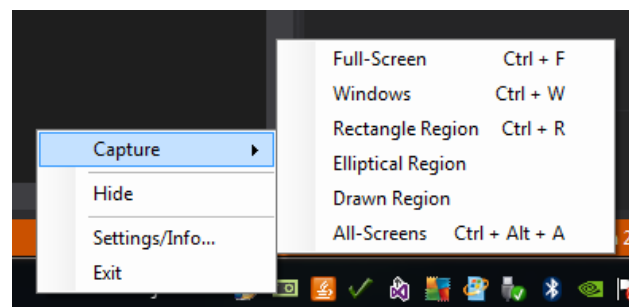
*Magnification Level - The amount the magnifying glass will zoom in on the screen.*

You can access the info window by clicking the . This window will tell you about the application like the version and will provide you a link to my website

where I have other creations. You also have a link to the "User Manuel" . This file is in the same folder as the executable.

## Minimizing To Tray

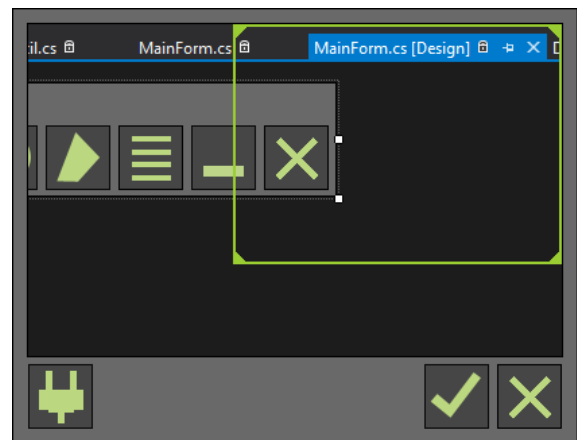
To minimize the app to system tray, you must click the . The main window will hide and an icon will appear in the system tray. You right-click the icon to access almost all of the functionality you would come across in the main



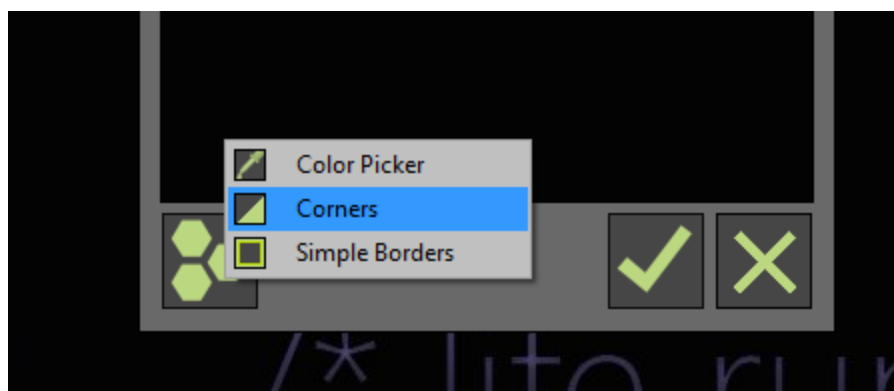
window. The capture modes will have their corresponding hot-key displayed to the right. You can show the main window (if its hidden) by clicking on the apps tray icon.

## Image Preview Window

The preview window is the window that appears after you take a screenshot. The window will have a built-in cropping region. You can control the region with its sides, corners or by dragging it from its center.



In the bottom left hand corner of the window, there is the "Screenshot Utilities". At the time of this writing, there are 4 utilities. Utilities that alter the screenshot will have both an accept button and a discard button. Whereas other utilities will have only an accept button.



# Command Line Interface

Screenshot tasks can be performed with the command line interface instead of using GUI. This will allow you to interface with the program with commands. You would want to do this to perform a sequence of tasks with one click. The interface is not case-sensitive.

**Note:** The program determines what order the tasks are to be performed.

Valid output formats are: PNG, BMP, GIF, JPEG

**I will not cover MS-DOS specifics or creating batch files.**

You can pass as many arguments to the program as needed and in whatever order you like. The switches can start with a dash (-) or a forward slash (/). I will use a dash in the examples. Here is an example of a line of commands.

`ScreenSharp.exe "C://bitmap" 1000 -f -f -f`

This specifies that I want to take three full-screen shots, wait one second before each capture and save them to a folder named "bitmap" on my C-Drive. Now I will go over the different switches and what not.

**Directory or File Name:** This is the only mandatory argument. It determines what to do with the output. If you specify a file name, and perform more than one task, the file at that path will simply be overwritten. The file format is determined by the extension of the file path. If a directory is specified, you cannot control how the output files are named, but you will be able to perform multiple operations. In this case, the file format is by default bitmap. But you can specify otherwise with another argument (See "Output Format").

ex: `"C://bitmap"` or `"C://My Screenshots/fullscreencap.bmp"`

**Desktop Paint Time:** This specifies how much time (in milliseconds) to wait before each capture. You would want to use this if you were for instance: Performing a sequence of full-screen captures, or hiding windows just before



running the commands. You may specify whole numbers only. If this is left out the default value of 200 is used.

**Full-Screen Capture:** You can specify a full-screen capture with "-f". This will capture your primary screen. You can specify a screen index (offset around zero) to capture other screens. It would look something like this "-f1". Would capture you extended screen if you have one. If you specify a screen that does not exist, the program will tell you and the argument will be unrecognized. To capture the working area of a screen, specify a "w" after the "f". Ex: "-fw0". The working area is typically the area that a maximized window will fill.

**Window Capture:** You can capture the foreground window with s "-w" switch. You can also capture a window by its caption with this format: "-w:{Caption}". If a window is found, the window will be brought forth before capture. Otherwise the primary screen will be captured.

Ex: "-w:Notepad"

**Extension:** The extension argument deals with the output file-type when a directory is specified. The extension must includes the period. If not specified the default file-type is .bmp.

Ex: ".png"

**Suppress Errors:** "-nomsg" will suppress error and warning messages. Errors messages will show in a message box/dialog when for example; no directory is specified, an argument cannot be processed, a window could not be found by caption.

**All Windows:** You can capture all application windows with the "-all" command. The output bitmap will just encompass all of the app windows. An application window is identified by being a visible window with borders.

**Open:** "-open" Opens the directory in explorer or the image in the default image viewer.

**Clear Config:** "-clearconfig" will clear all ScreenSharp user configurations.

**Instant Capturing:** This will allow you to use capture modes and save images instantly without opening the main window. The application closes after the screenshot has been saved to file or the capture operation has been canceled.

***"-instant0" will open window capture mode***

***"-instant1" will open full-screen capture mode***

***"-instant2" will open rectangular region capture mode***

***"-instant3" will open elliptical region capture mode***

***"-instant4" will open drawn region capture mode***

**At this time I could not implement instant capture for All-Screens.**