



SOUNDS SUITE

KIWA INTERNATIONAL LIMITED

VoiceQ *ADR* & **VoiceQ *DUB*** Quickstart Guide

VoiceQ[®] ADR version 1.8.5

VoiceQ[®] DUB version 1.8.5



Table of Contents

INTRODUCTION	1
SYSTEM REQUIREMENTS	1
INSTALLING VOICEQ.....	2
DEMO PROJECTS.....	2
AUTHORIZATION.....	2
WHAT'S NEW IN 1.8.5.....	3
FEATURES ADDED	3
IMPROVEMENTS.....	4
WHAT'S IN 1.8 SERIES TO DATE.....	4
FEATURES ADDED	4
IMPROVEMENTS.....	5
OVERVIEW.....	7
VOICEQ CONFIGURATIONS	7
STANDALONE CONFIGURATION	7
SINGLE COMPUTER CONFIGURATION	7
DUAL COMPUTER CONFIGURATION (RECOMMENDED)	8
STANDALONE CONFIGURATION.....	8
SINGLE COMPUTER CONFIGURATION	9
SETTING UP THE IAC BUS.....	10
DUAL COMPUTER CONFIGURATION – MIDI OVER NETWORK.....	12
SETTING UP A NETWORK MIDI SESSION.....	12
DUAL COMPUTER CONFIGURATION – MIDI VIA HARDWARE.....	15
PRO TOOLS 7.2 SETTINGS:	16
TIME CODE SETTINGS.....	16
MIDI MACHINE CONTROL	16
MIDI BEAT CLOCK.....	17
VIDEO SCRUBBING	18
ENABLING MMC CUEING (MIDI LOCATE) OF PRO TOOLS	18
PRO TOOLS 7.3 AND 7.4 SETTINGS:.....	20
TIME CODE SETTINGS.....	20
MIDI MACHINE CONTROL	21
MIDI BEAT CLOCK.....	22
VIDEO SCRUBBING	23
ENABLING MMC CUEING (MIDI LOCATE) OF PRO TOOLS	23
GENERAL FEATURES.....	24

VOICEQ SCROLLING TEXT	24
VISUAL STREAMERS	25
PREVIEW LINES.....	25
SCROLLING RULER.....	25
SCROLLING WAVEFORM.....	25
TIMELINE COMMANDS.....	25
TRANSPORT COMMANDS.....	25
DISPLAY AND CUEING CONTROLS	26
GENERAL PREFERENCES WINDOW.....	26
DISPLAY PREFERENCES WINDOW.....	27
CUES PREFERENCES WINDOW.....	27
PROJECT SETUP WINDOW	27
QUICKSPOT	28
QUICK KEYS REFERENCE GUIDE	29
SUPPORT	31

Introduction

This guide documents how to install the VoiceQ ADR and VoiceQ DUB applications. For the purposes of this guide both applications are referred to as VoiceQ. User training and advice is available as part of your initial license to use VoiceQ. Should you require additional training at any time please contact KIWA International Ltd or its representatives listed on page 16.



Note: This guide assumes the user has working knowledge of Mac OS X and an understanding of Video and Audio formats. For complete step-by-step instructions please refer to the VoiceQ User Manual.

System Requirements

VoiceQ software can be used with any Apple Macintosh computer with the G4 (1.25 Ghz or faster), G5 or Intel range of processors. VoiceQ requires Mac OS X Tiger (10.4) or Leopard (10.5).

With the purchase of your license to use this application, you will receive the following items:

1. VoiceQ Installer and Manual
2. VoiceQ License
3. Complimentary Script Import Manager (SIM) Application for script file conversion and preparation



Note: This software will operate on Mac OS X only.



Please visit our [website](#) for a complete list of system requirements.

Installing VoiceQ

This chapter explains how to install and configure VoiceQ on a compatible Apple Mac computer.

1. Close down all other applications
2. From DVD - Insert installation disk into DVD drive and copy the VoiceQ Folder to your Applications Folder
3. From Download - Unzip the downloaded file and copy the VoiceQ Folder to your Applications Folder
4. Open the VoiceQ Folder and Launch VoiceQ by double clicking the application
5. You may be prompted to download and install the latest version of PACE's interlok extensions which are required for VoiceQ to run. A version of these extensions is included in the VoiceQ Folder **Installers > Interlok_extensions.zip**.
6. Press the 'Try' button to use VoiceQ's 7 day free demo.
7. If you wish to authorize your copy of VoiceQ press the 'Buy' button and choose the appropriate authorization method.

Your software is now installed

-  Note: If you have purchased VoiceQ please keep reading for instructions on authorizing your software.
-  If your evaluating VoiceQ before you purchase, please enjoy your free 7 day fully featured trial. You can find demo projects on the installer disk or on our [website](#).

Demo Projects

The VoiceQ installer disc includes a folder of demo projects and Quicktime movies. Copy these to your usual video or audio work drive. Also included on the DVD are 'Test Leader' quicktime files to test and confirm correct output of VoiceQ on your external monitor or display system. Demo project packs are also available on our [website](#).

Authorization

VoiceQ provides a 7 day fully featured trial period for evaluation. If you wish to use VoiceQ after this period you will need to purchase a license.

If you already have an iLok USB smartkey:

1. Contact sales@voiceq.com to purchase a license. Include your iLok.com username.
2. We will credit your iLok.com account with a license.
3. Download the license to your iLok USB smartkey using the iLok.com website.
4. Plug the iLok USB key into the Mac you have VoiceQ installed on.
5. VoiceQ will automatically recognize your iLok and is now ready to use.

If you require us to supply an iLok USB smartkey:

1. Contact sales@voiceq.com to purchase a license. Include your preferred iLok.com username and email address. Also include your shipping address, so we can send you the USB smartkey.
2. We will create your iLok.com account and authorize the USB smartkey.
3. We will ship the USB smartkey to you.
4. Plug the iLok USB key into the Mac you have VoiceQ installed on.
5. VoiceQ will automatically recognize your iLok and is now ready to use.

What's New in 1.8.5

Features Added

- Added page breaks to Character Script Report allowing Character's/Actors lines to be printed on separate pages
- Added visual countup function for those used to a '1, 2, 3' cue count in addition to the visual countdown ie. 3, 2, 1.
- Added screen mask to work in tandem with all other cues. Essentially the movie is completely covered until the cue point. These settings can be set in **Preferences >Display> Screen Mask** and include:
 - Off: Turns screen mask off
 - On Current Line: Displays screen mask on highlighted line only
 - On Every Line: Displays screen mask on all lines
 - Duration: Sets the start time of when to display the screen mask
 - Screen Mask Color: Adjusts the color of the screen mask. You can derive the color from the character's color or assign your own.
 - Transparency: Adjusts the color transparency of the screen mask.
- Enhanced Preview Line preferences to include triggers on single lines or all lines with automatic scaling. These settings can be set in **Preferences>Display>Preview Text** and include:
 - Off: Turns preview lines off
 - On Current Line: Shows a preview of the selected line in the script view or timeline
 - On Every Line: Shows a preview of each line that is coming.
 - Preview Line Appearance Offset: This is the time in seconds that the preview of a line will appear before it should be spoken. The minimum offset is zero seconds, the maximum offset is five seconds. The line previewed is based on the location of the playhead.
 - Width: Adjusts the width of the preview line window.
 - Height: Adjusts the height of the preview line window.
 - Horizontal: Adjusts the horizontal position of the preview line window as a percentage of the output window
 - Altitude: Adjusts the vertical position of the preview line window as a percentage of the output window

- Transparency: Adjusts the transparency of the preview window. The text remains fully visible.
- Background Color: Adjusts the color of the preview window. You can derive the color from the character's color or assign your own. By assigning your own color the preview window will use that color regardless of which character is displayed.
- Maximum Font Scale: A scale value that determines the maximum scale size of the font.
- Minimum Font Scale: A scale value that determines the minimum scale size of the font.
- Show Character Name: Toggles ON/Off to display the character name assigned to the line
- Retain Whole Words: Toggles whether or not to display whole words or hyphenate to fit preview line window.
- Added Preference to set the Default Language in **Preferences >General > Default Language**
- Added Report Builder facility to customize reports. This facility can be accessed through **File > Report > Report Builder** and includes:
 - Ability to add Header, Logo or image and Footer
 - Ability to define file data attributes, fields and to sort the data in the chosen order
 - Ability to export reports in Text, CSV and HTML formats
 - Ability to save report templates

Improvements

- Some file menu buttons were not visible for OSX 10.4 (Tiger) users - now included
- Synchronizing in the timeline caused some crashes for OSX 10.4 (Tiger) users - now addressed

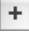

What's in 1.8 Series to date

Features Added

- Added menu commands to export the project as an XML and TXT document for SIM and other applications to use
- Added function to Play/Pause and use other Key commands when the main window is not in focus
- Added preference to not display cues for lines marked as done. This setting can be set in **Preferences >Cues > Show done lines**
- Added preference to apply 'black letterboxes' for masking over visual distractions (like timecode) embedded in the video. The settings can be changed in **Preferences > Display > Picture Mask**

- Added preference to change the video output size while maintaining the aspect ratio. Can be adjusted in **Preferences > Display**
- Added preference to customize the size of the 'line data field'. The settings are available in **Preferences > General**
- Added preference in **Preferences > General** to create or use an existing Character Color Table. This feature provides the ability to apply the same color for a character across multiple projects, episodes and/or reels.
- Added Pull Up and Pull Down ability, intended to help offset lines by 0.1% of their start and end time to assist with changing frame rates. These settings can be found in the project setup (**Window > Project Setup...** or ⌘9). Pull up/down is applied to the cue timings only, NOT to the video.
- Fixed the trigger bar. Before a trigger would be drawn from the highest band to the lowest.
- Spoken words have the option to change color as they hit the trigger bar. This color can be changed in **Preferences > Cues > Font Color at Trigger**. This color affects all VoiceQ projects.
- Added Hi-Def Playback support on Mac Pro and Mac Book Pro machines. Supports Apple ProRes, DVC Pro, Motion JPEG and Photo JPEG Hi-Def codecs with true 1920 x 1080 resolution playback on compatible computers. Appropriate speed hard drives and data compression are required for Hi-Def playback
- Added Clean Display menu option (⌘1) - removes *all* VoiceQ overlays on output window. UI buttons grey out when active.
- Added High Quality Picture mode (⌘2) - prioritizes output window updates to ensure smoother scrolling text and the output window is synced to the vertical refresh
- Added Picture Scrub - Drag in time line to scrub picture.
- Added Multi language text file import - VoiceQ DUB now imports text files containing multiple translations. Include the language codes in the header.
- Added frame-rate in text file import - include frame rate in the header to automatically set the project frame rate in VoiceQ.
- Added VoiceQ Preference to customize color and width of trigger bar
- Added Go to Timecode (⌘G) - enter timecode + return to locate to new position and update all windows.
- Added new preference to resize the output window at 25%, 50%, 100% and 200% original size. Allows for viewing HD and large size video formats on internal screen of laptops.

Improvements

- The  and  buttons are now visible in the character window for OSX 10.4 (Tiger) users.
- Spot Line Start was not working when the quick key was depressed and the user was moving lines simultaneously in the timeline view. To alleviate this issue the Spot

Start Line and Spot End Line quick keys have been remapped to ^i (control + i, Spot Start Line) and ^o (control + o, Spot End Line).

- Fixed a bug that would cause the script view and the timeline to become out of sync after spotting lines. Now when you click a line in the script editor that line is correctly selected in the timeline view.
- When importing scripts without timecode from SIM the lines are now imported thirty minutes after the start point of the scene. This allows the user to spot each line with more accuracy and efficiency.
- Dragging at edges of timeline window will scroll window.
- Improved menu layout and labels to be in line with Apple standards.
- Improved dialogue boxes to be in line with Apple standards.
- Zooming stays centered on current position if no line selected.
- Script view keeps current 1/3rd from top to enable viewing of upcoming lines.
- Improved character color and display qualities
- Improved preview text on output window - text no longer stretched
- Selecting a line now centers the timeline on that line, both horizontally and vertically.
- Scrolling text now rendered on top of trigger line - enhances view of scrolling text.
- Scrolling text now rendered on top of trigger line -enhances view of scrolling text
- During playback the red playhead line becomes dotted and all buttons grayed out - indicates playback mode more clearly
- Improved timecode entry in the timecode counter display - values may now be entered as just numbers e.g., 013000 becomes 00:01:30:00. Can enter feet and frames 74512 becomes 745 + 12.
- Feet and Frames values now displayed without including the hour from the timecode avoids ridiculously large feet and frames values.
- Removed dialog box when entering incorrect timecode values into the timecode counter window - now flashes "Invalid" in the timecode counter display. Provides a quicker way to correct the error.
- Current language remembered when loading new projects (via Open Project or Open Recent). Note: Still defaults to the PPrimary Language on program startup, or if the current language is not available in the new project.
- Fixed a bug with international keyboard that did not correctly register some modifier keys when typing special characters. Effected Swiss, French, Spanish, and some others.
- Associated QuickTime renamed to Import Quick Time with new Quick Key ⇧⌘I.
- Removed the Return to Zero shortcut from the return key - conflicted with other functions and not used a lot.
- Changed Project Setup > Movie label 'Offset' to

- 🔊 Start' - more accurately reflects the function.
- 🔊 Changed QuickSpot keyboard shortcut keys to option + i (spot start or in point) and option + o (spot end or out point) - prevents accidental moving of lines and uses keys common on all International keyboards. (Previously 'comma' and 'full stop' were easily available on some international layouts)
- 🔊 Fixed MMC hour bug where VoiceQ would not output the correct hour via MMC commands when using dual computer configuration.

Overview

During the recording process VoiceQ takes over the role of playing back the quicktime movie file from ProTools. You can leave the quicktime file loaded in your ProTools session, but the track should be disabled, to avoid competing with the VoiceQ application.

VoiceQ superimposes the scrolling text on the quicktime movie and outputs it via the second DVI port of your Apple Mac video card (or the external DVI port on laptops). VoiceQ uses the Graphics Processing Unit (GPU) and the Memory in the video card to process the video reducing the load on the CPU of your computer.

VoiceQ will chase and scrub with ProTools while you work in ProTools. VoiceQ also has an option to cue ProTools when you select a line in VoiceQ. This will locate the ProTools session to the record location for the selected line with an adjustable preroll value. VoiceQ does not control ProTools in any other way at this time.

Actual recording of audio and management of playlists still takes place in ProTools using your normal process



Note: In a single computer configuration VoiceQ will work with many other recording applications including Logic Pro, Soundtrack and others. Check out website for the correct setup instructions and screen shots for these applications.



Note: In a dual computer configuration the Digital Audio Workstation may be any device that will output MIDI Time Code (MTC)

VoiceQ Configurations

Standalone Configuration

A **Standalone configuration** is defined as VoiceQ being operated on a single Macintosh computer with interaction with ProTools or any other external device or machine. VoiceQ is typically used in standalone mode for the purpose of preparing a VoiceQ Project ready for recording in a studio. Once the VoiceQ Project has been created and synchronized, it can then be loaded onto the Studio Machine.

Single Computer Configuration

A **Single Computer Configuration** is when VoiceQ is on the same computer as ProTools. This setup uses the Apple Inter Application Communication (IAC) bus to send all MIDI between the two apps. It is not recommended to use VoiceQ's High Quality mode on this configuration as ProTools requires a large amount of the CPU power for correct operation.

Dual Computer Configuration (Recommended)

A **Dual Computer Configuration** is when VoiceQ is on a separate computer to that of ProTools or the DAW. This is now the preferred configuration when using VoiceQ in a recording session, as it provides superior picture playback and access to the VoiceQ app without disturbing the engineer and it also provides the added advantage of reducing the system load on the ProTools machine. Use the new High Quality mode for best picture quality and smooth text scrolling. There are two types of Dual Computer Configurations: MIDI over network and MIDI via hardware interfaces.

Standalone Configuration

VoiceQ operates on its own Macintosh computer for the purpose of preparing VoiceQ projects.

VoiceQ computer



VoiceQ operates in standalone mode for preparation

VoiceQ video output via 2nd DVI port directly to monitor or use adaptor for VGA or composite video

VoiceQ Output Monitor



Input via DVI, VGA or composite video

Standalone Configuration

Single Computer Configuration

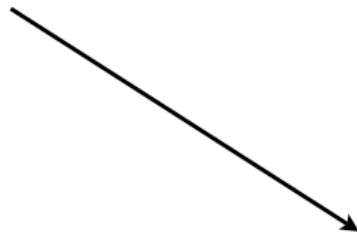
VoiceQ and Pro Tools applications running on the same computer using Apple IAC bus for MIDI.

DAW computer - Pro Tools and VoiceQ



Pro Tools sends MTC, MMC and MBC via Apple IAC bus to VoiceQ

VoiceQ video output via 2nd DVI port directly to monitor or use adaptor for VGA or composite video



VoiceQ Output Monitor



Input via DVI, VGA or composite video

Single Computer Configuration

Setting up the IAC Bus

The Apple Inter Application Communication (IAC) Bus is used to send all MIDI information when VoiceQ and Pro Tools are on the same computer - a **Single Computer Configuration**.

Note: A MIDI interface or Network Session is used when the DAW and VoiceQ are on separate machines (dual computer configuration). If you are using a **Dual Computer Configuration** you do not need the IAC Bus and can skip directly to the next chapter.

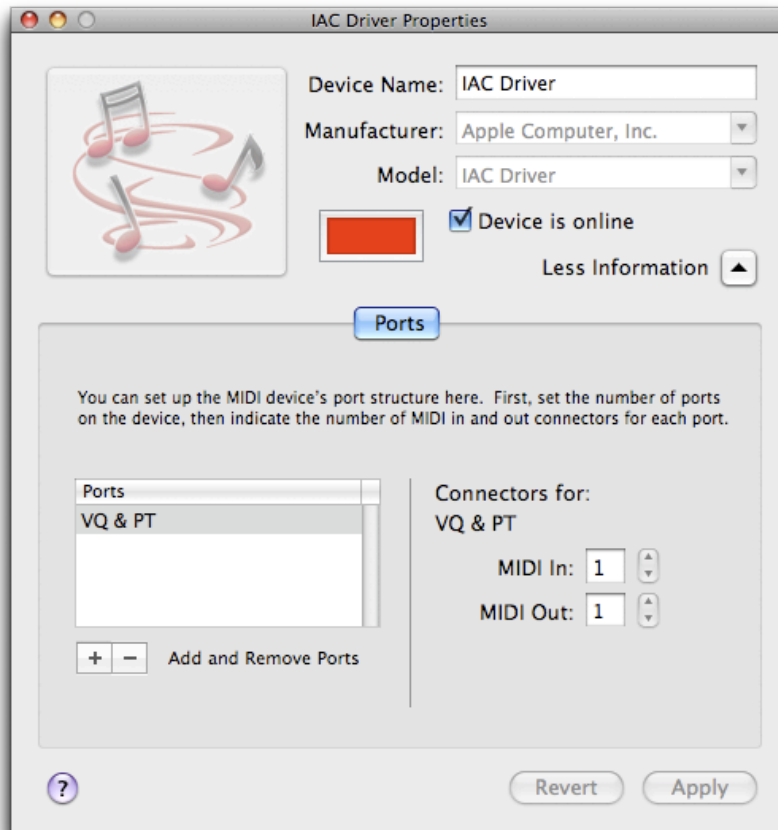
To enable Inter Application Communication between VoiceQ and Pro Tools:

1. Open the **Audio MIDI Setup** utility on your Mac HD.

Macintosh HD > Applications > Utilities > Audio MIDI Setup



2. Double click the red **IAC Driver** icon



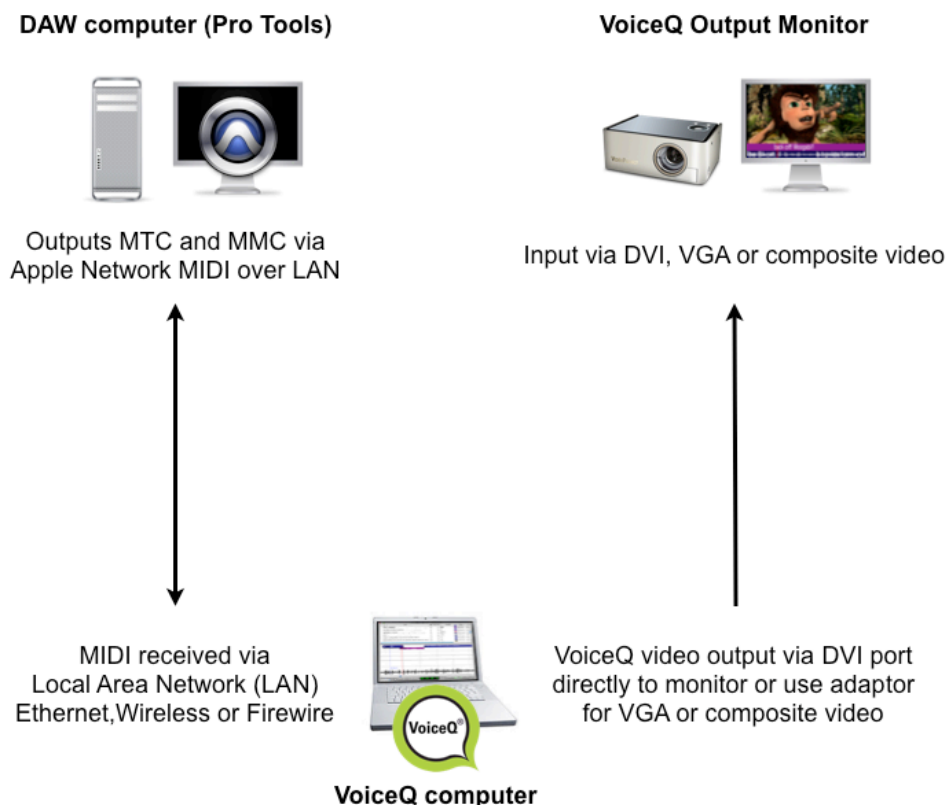
3. Check the **Device is Online** check box
4. Rename the Bus to **VQ & PT**
5. Apply the changes
6. Quit Audio MIDI setup
7. Reboot for the changes to take affect

Note: In some versions of the Audio MIDI setup application you may need to create a new port rather than editing the existing port to force the “Apply” button to become available. This is due to a bug in Apples Audio MIDI setup.

Now continue with the setup using the appropriate chapter for your version of Pro Tools.

Dual Computer Configuration - MIDI over network

Using separate computers for Pro Tools and VoiceQ with MIDI information sent via the Local Area Network (LAN).



Dual Computer Configuration - MIDI over network

Setting up a Network MIDI Session

With a **Dual Computer Configuration** we can use Apples MIDI network feature to send MIDI via the Local Area Network. This setup does not require any additional MIDI hardware. First configure your LAN so the 2 machines can communicate and 'see' each other on the local network. Contact your Systems Administrator for assistance.

Then on your **ProTools** machine:

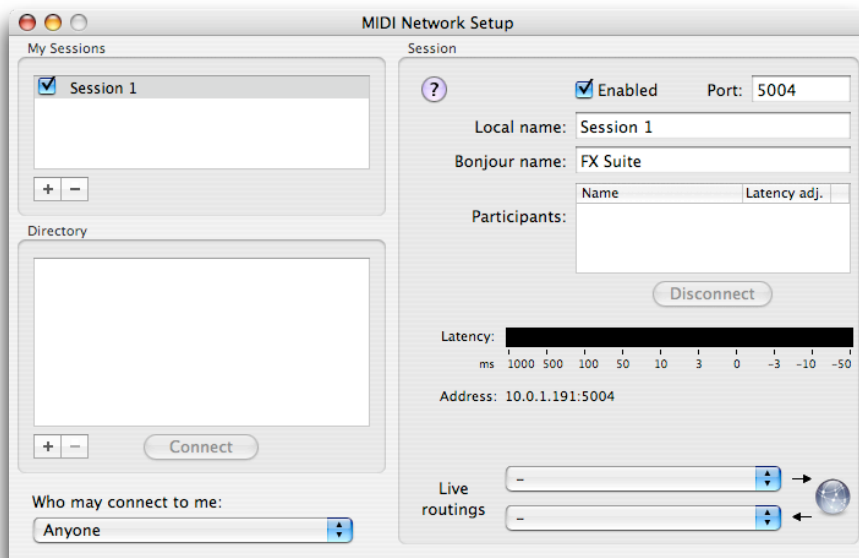
1. Open **Audio Midi Setup** in your Utilities folder.

Macintosh HD > Applications > Utilities > Audio MIDI Setup

2. In the **MIDI Devices** tab, double click the **Network Icon** to open the **MIDI Network Setup** window.

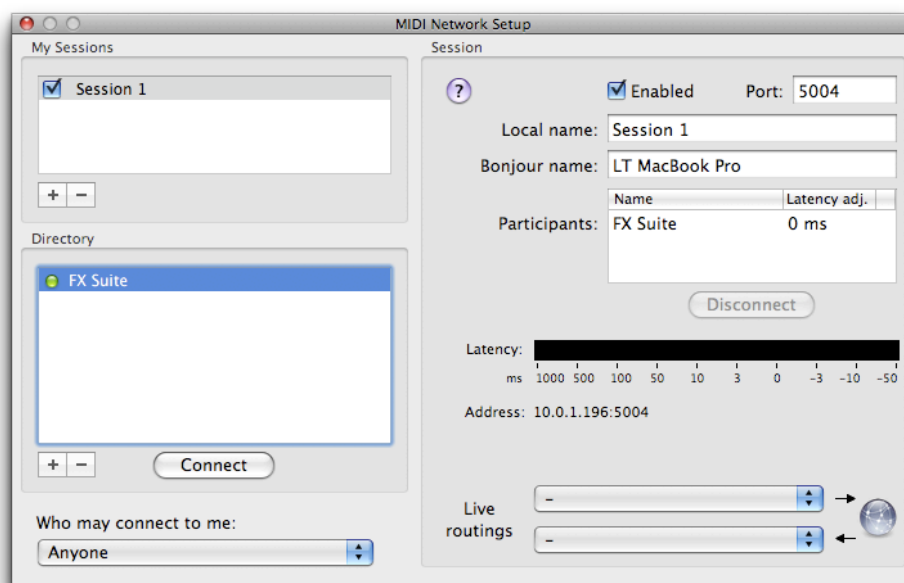


3. In the **MIDI Network Setup** window: Click the '+' sign under **My Sessions** to create a Network MIDI session. The default name is "**Session 1**" and check the **Enabled** box.
4. Under **Who may connect to me:** select **Anyone**.

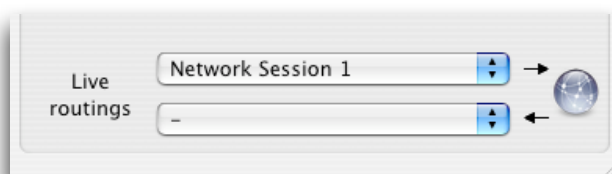


5. On the **VoiceQ Machine** repeat steps 1 - 4 above. When you have added your session and enabled the checkbox, it is important that you name the sessions the same name, the default is “**Session 1**”.
6. Under **Directory** you will see the Pro Tools Machine, select it and click **Connect** to connect to this machine.

Note: If you do not see the Pro Tools computer listed in the directory your LAN may not be set up correctly. Consult your System Administrator and make sure the 2 computers are on the same local network and can ‘see’ each other using Bonjour.



7. On the **ProTools Computer** in the “**Live Routings**” section, select the session you previously named in the top menu as the destination:



Now continue with the setup using the appropriate chapter for your version of Pro Tools.

Note: When you are using MIDI over the network configure the Pro Tools preferences to use the **Network Session 1** port you have just created as the destination for **ALL MTC and MMC connections**.

Dual Computer Configuration - MIDI via hardware

Using separate computers for Pro Tools and VoiceQ with MIDI information sent MIDI hardware interfaces.

DAW computer (Pro Tools)



Outputs MTC and MMC via
MIDI hardware interface



MIDI cable



MIDI received via
MIDI hardware interface



VoiceQ computer

VoiceQ Output Monitor



Input via DVI, VGA or composite video



VoiceQ video output via DVI port
directly to monitor or use adaptor
for VGA or composite video

Dual Computer Configuration - MIDI via hardware

This configuration requires a MIDI hardware interface on both computers which are connected via a MIDI cable.

Many Digidesign hardware boxes like the M-Box, Digi 001-003, Command 8 , Control 24 feature MIDI output ports.

The VoiceQ computer can use any standard USB MIDI interface, with VoiceQ automatically recognizing and chasing incoming MIDI timecode when it is set to online/chase mode.

Pro Tools 7.2 Settings:

This chapter details how to set Pro Tools 7.2 preferences to send the required MIDI information to VoiceQ.

In this example we are using the **IAC Driver VQ and PT** port as our destination.

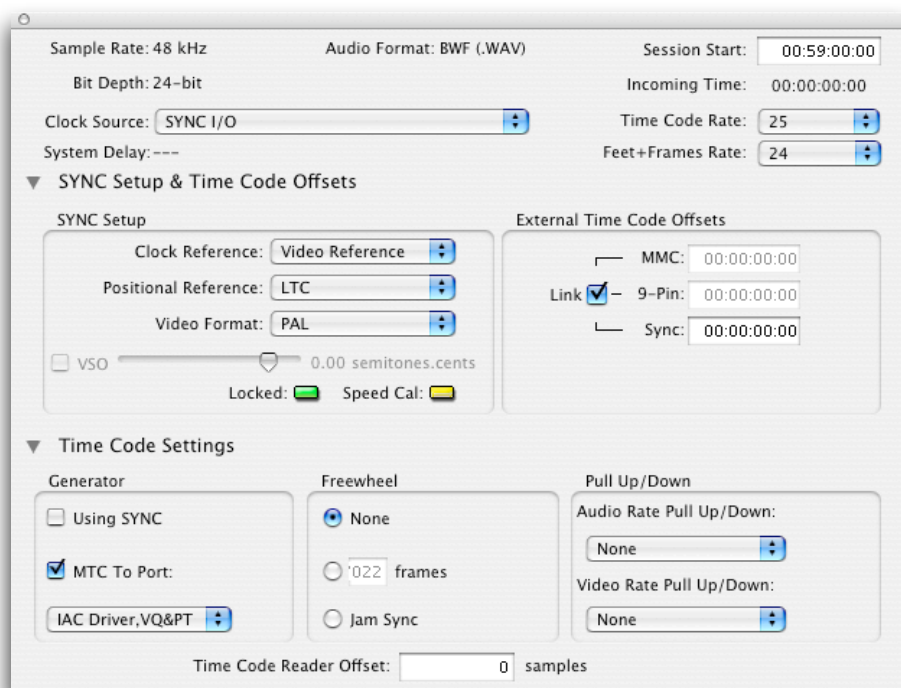
For Dual Computer configurations simply replace **ALL** menu selections of **IAC Driver VQ & PT** with the **Network Session 1** or hardware MIDI interface port eg. **Command 8 > Port 1**.

There are five areas within Pro Tools that need to be configured to enable VoiceQ to chase correctly.

Time Code Settings

In the window below set Timecode Settings from the Session Set Up window to:

- 🔊 **Time Code Settings > Generator:** enable **MTC To Port**
- 🔊 Select the destination port: **IAC Driver, VQ & PT**

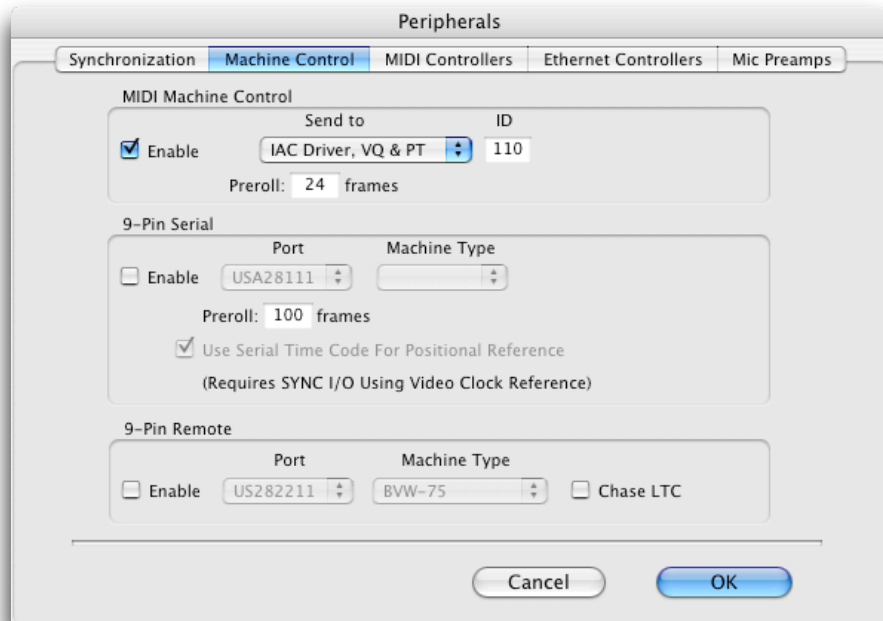


MIDI Machine Control

In the Pro Tools / Peripherals window (Machine Control tab) set MIDI Machine Control to:

- 🔊 Select **Enable**
- 🔊 Select the destination port: **Send To > IAC Driver, VQ & PT**
- 🔊 Set the MMC ID to **110**

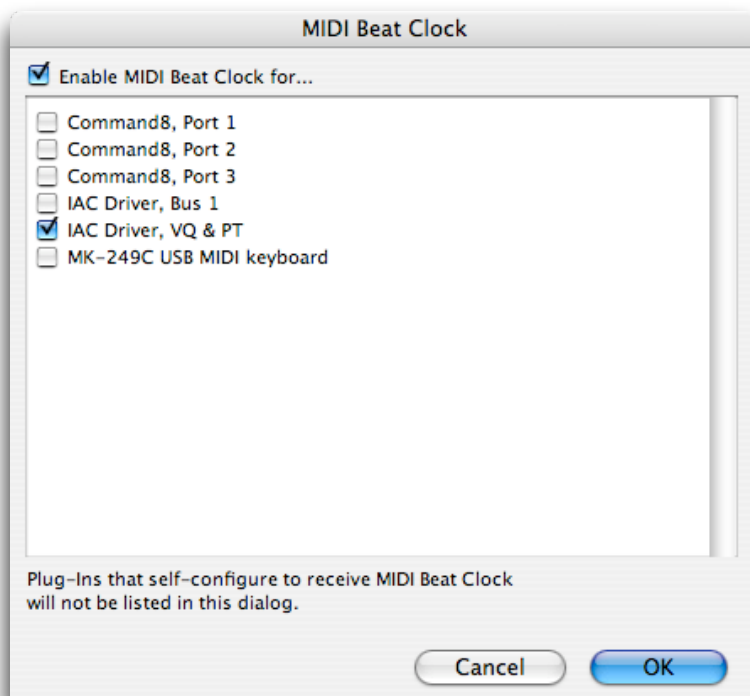
Refer example below:



MIDI Beat Clock

- ☒ In the **Pro Tools > MIDI Beat Clock** window check: **Enable MIDI Beat Clock for...**
- ☒ Enable the destination port: **IAC Driver, VQ & PT**

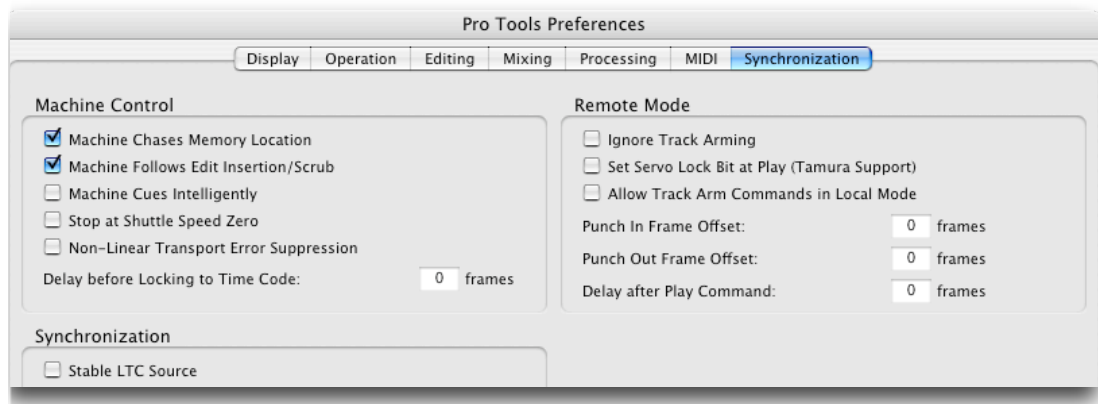
Refer example below:



Video Scrubbing

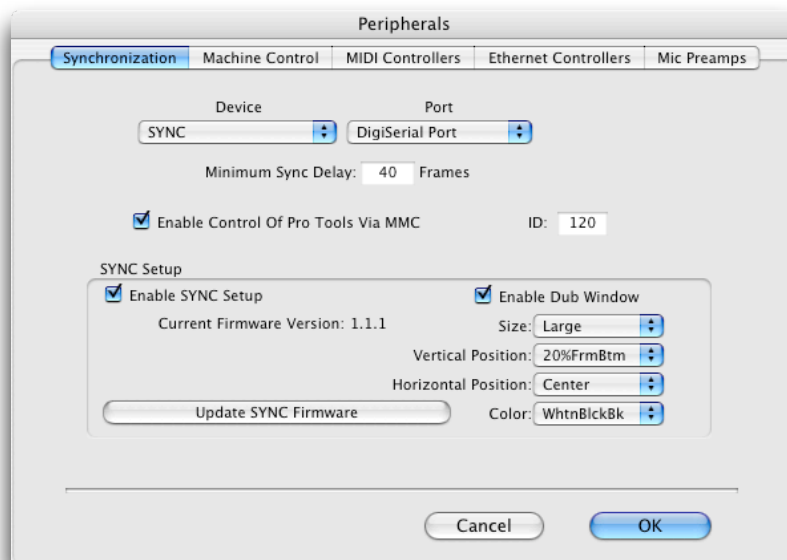
Open the **Pro Tools Preferences** and select the **Synchronization** tab.

Check the Machine Chases Memory Location and the Machine Follows Edit Insertion/Scrub as in the example below.

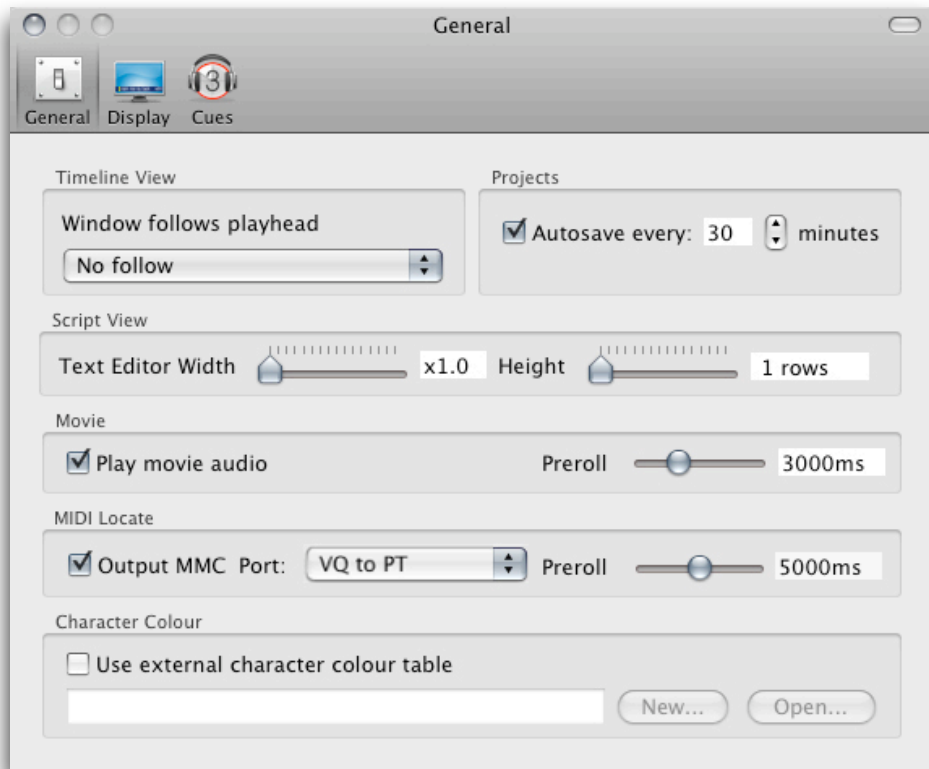


Enabling MMC cueing (MIDI Locate) of Pro Tools

To enable MMC cueing of Pro Tools from VoiceQ you will also need to check the **Enable Control Of Pro Tools Via MMC** option in **Peripherals > Synchronization** in Pro Tools. Change the MMC ID to 120.



In VoiceQ check the Output MMC and select **Preferences > General > MIDI Locate > Output MMC > VQ to PT** to activate the MIDI locate option.



VoiceQ will now chase the incoming MIDI timecode from ProTools. VoiceQ will also scrub the video and scroll text in response to the MIDI machine control. MIDI Beat clock is used for additional synchronization accuracy. The transport controls in VoiceQ can also be used, even when VoiceQ is waiting for external MTC. To have VoiceQ chase incoming MTC from Pro Tools click on the 'Chase External Timecode' button in the transport section or use the Quick Key ⌘J.

Pro Tools 7.3 and 7.4 settings:

This chapter details how to set Pro Tools 7.3 or 7.4 preferences to send the required MIDI information to VoiceQ.

In this example we are using the settings for a single computer configuration and using the **IAC Driver > VQ and PT** port as the destination for all the Pro Tools MIDI information.

For dual computer configurations simply replace **ALL** menu selections of **IAC Driver VQ & PT** with your **Network Session 1** or hardware **MIDI interface port** as the destination for MTC and MMC.

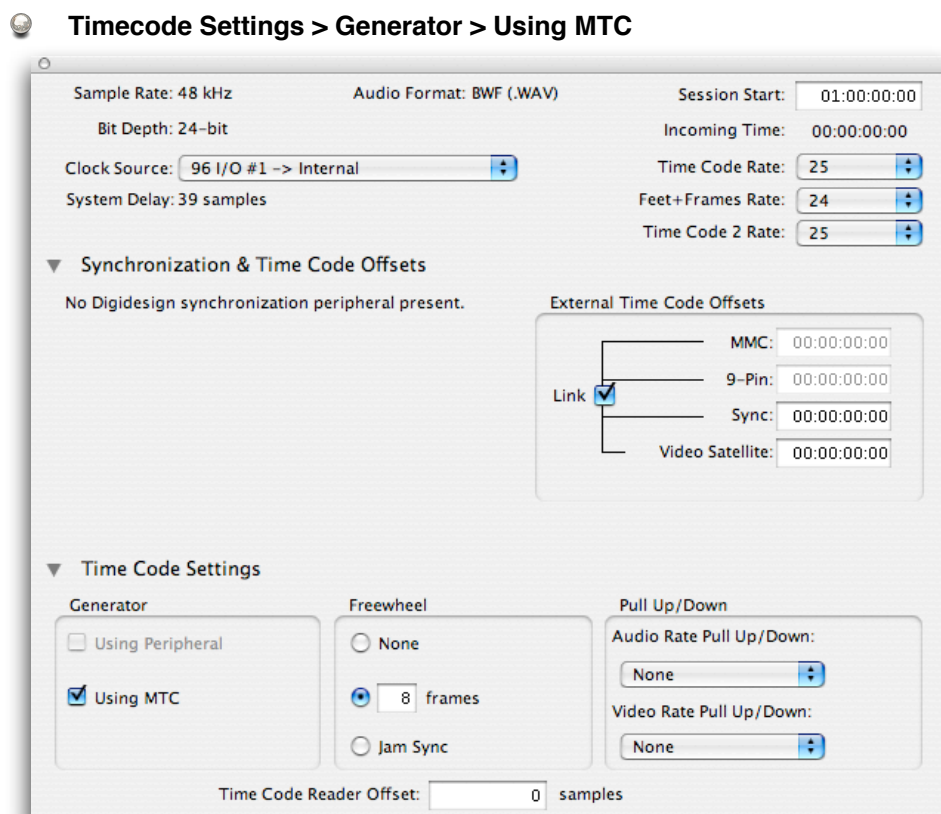
Sync Connection Type MIDI Destination Port

MIDI Interface	Interface MIDI Out port 1
MIDI over network	Network Session 1
MIDI over IAC Bus	IAC Driver > VQ and PT

There are five areas within Pro Tools that need to be configured to have VoiceQ chase correctly. As of Pro Tools version 7.3 onwards these preferences have moved location.

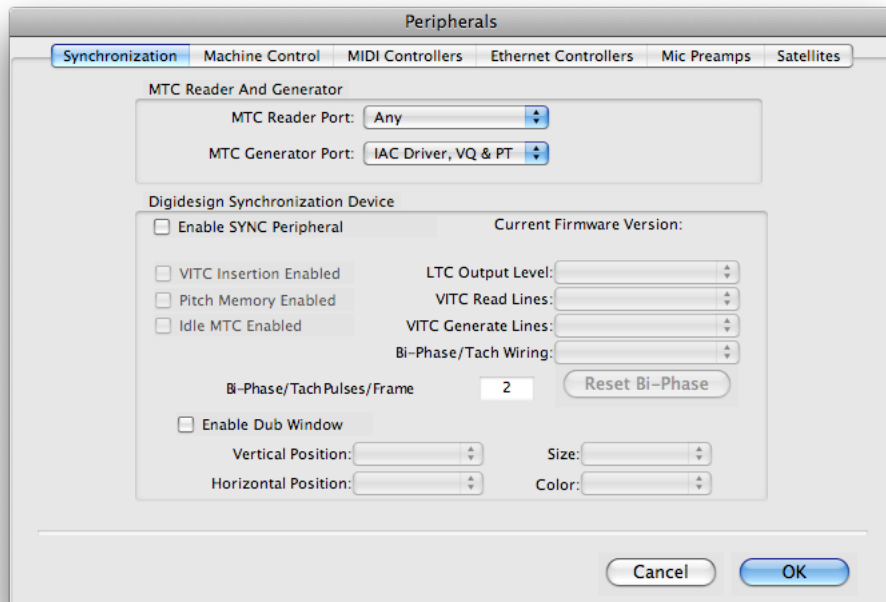
Time Code Settings

In the example below enable Using MTC in the Session setup window.



Go to **Peripherals -> Synchronization -> MTC Generator Port** menu.

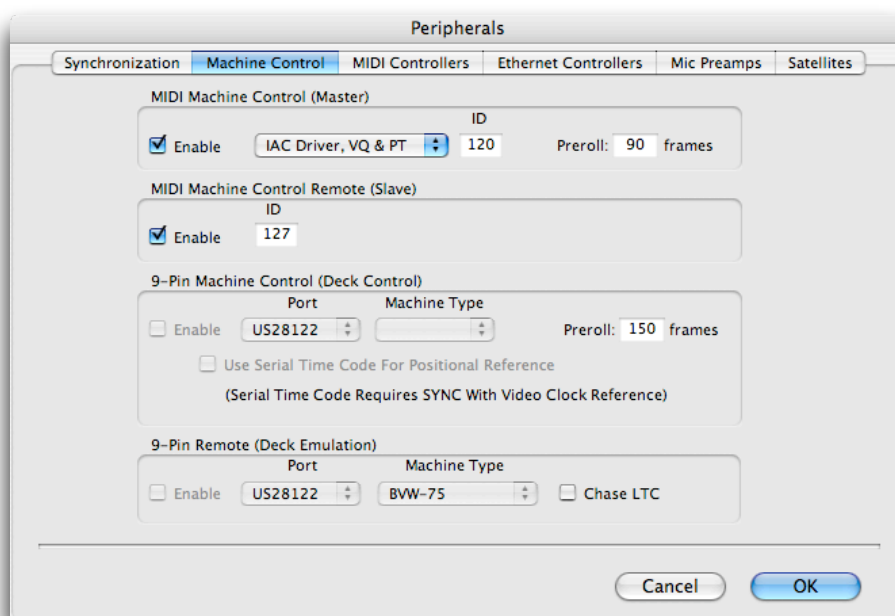
Select the destination port "**IAC Driver, VQ & PT**"



MIDI Machine Control

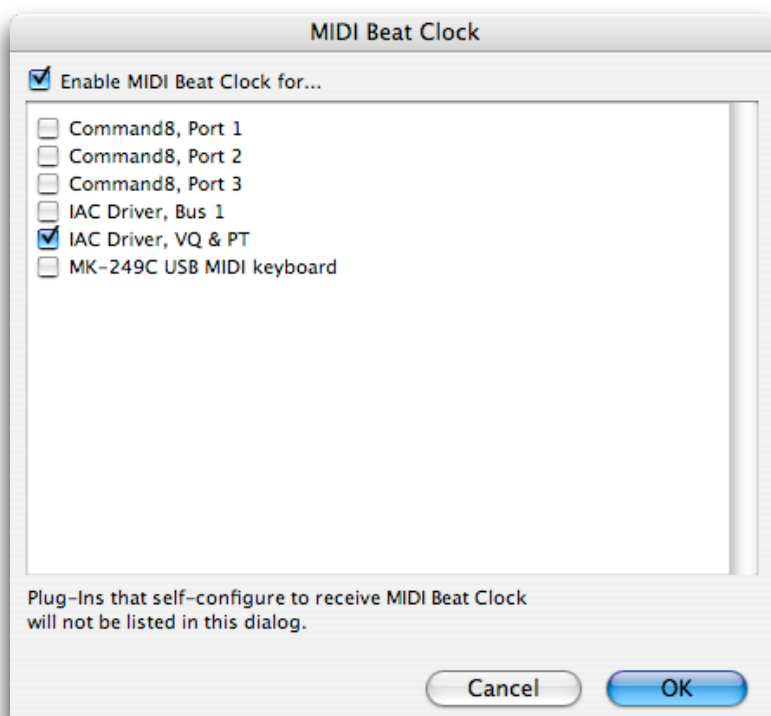
In the Pro Tools / Peripherals window (Machine Control tab) set MIDI Machine Control to:

- Select Enable
- Send To: Select the destination **IAC Driver, VQ & PT**
- Set the MMC Master ID to 120



MIDI Beat Clock

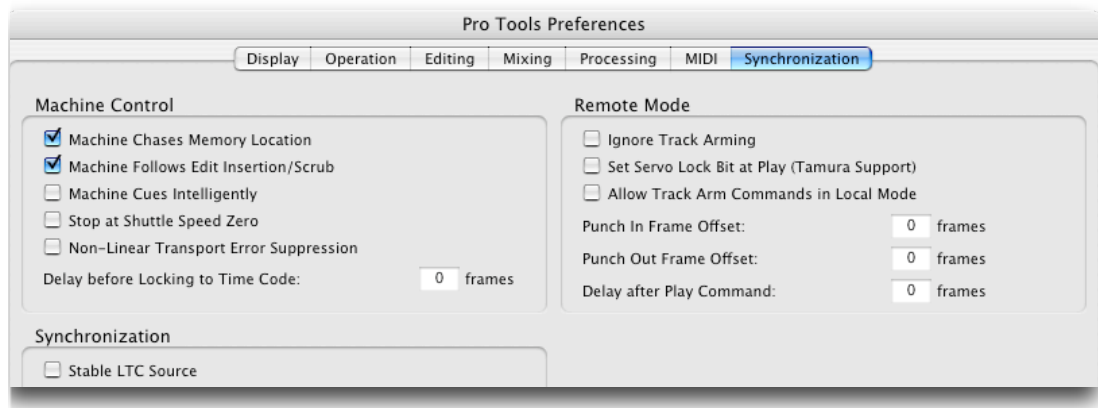
- ☑ In the **Pro Tools Setup > MIDI > Midi Beat Clock** window check: **Enable MIDI Beat Clock for...**
- ☑ Enable the destination port: **IAC Driver, VQ & PT**



Video Scrubbing

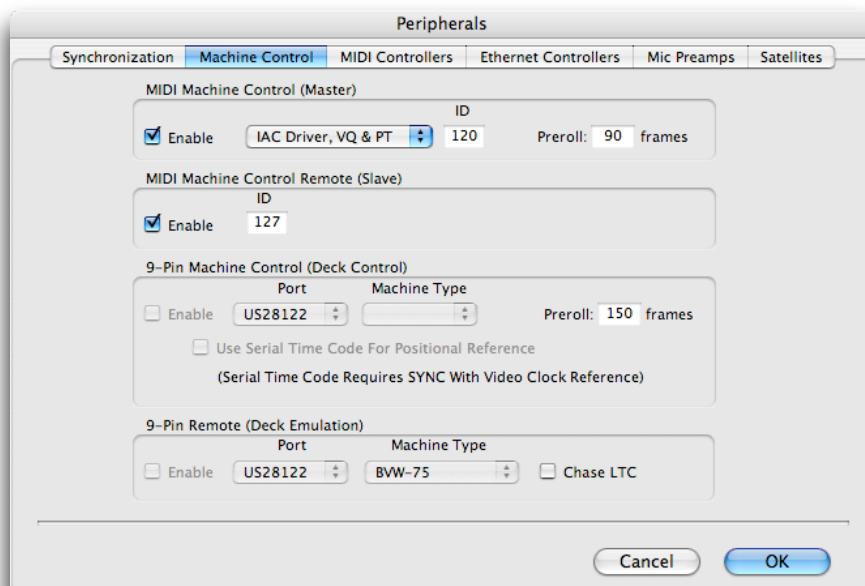
Open the Pro Tools Preferences and select the Synchronization tab

Check the **Machine Chases Memory Location** and the **Machine Follows Edit Insertion/Scrub** as in the example below:

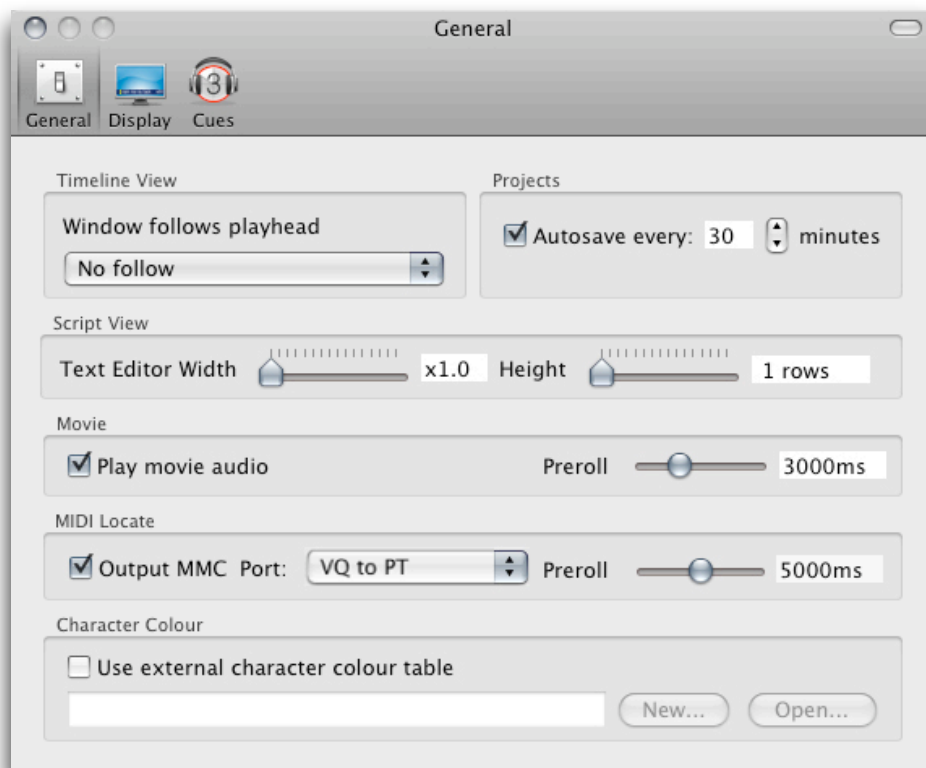


Enabling MMC cueing (MIDI Locate) of Pro Tools

To enable MMC cueing of Pro Tools from VoiceQ you will also need to check the **MIDI Machine Control Remote (Slave)** option in **Peripherals > Machine Control** in Pro Tools. Set the MMC ID to 127.



In VoiceQ check the Output MMC and select **Preferences > General > MIDI Locate > Output MMC > VQ to PT** to activate the MIDI locate option.



VoiceQ will now chase the incoming MIDI timecode from ProTools. VoiceQ will also scrub the video and scroll text in response to the MIDI machine control. MIDI Beat clock is used for additional synchronization accuracy.

The transport controls in VoiceQ can also be used, even when VoiceQ is waiting for external MTC. To have VoiceQ chase incoming MTC from Pro Tools click on the 'Chase External Timecode' button in the transport section or use the Quick Key ⌘J.

General Features

VoiceQ Scrolling Text

The heart of VoiceQ is its patented Scrolling Text cues. The text font, color, scroll speed, trigger position, color and size is adjusted in **Preferences > Cues > Text**.

Beeps with optional visual counts

Traditional audio beep countdown (also called pips) for audio cueing of Voice Talent. Beeps can be set to play on the currently highlighted line only or all lines. The volume, frequency, duration, and timing is adjusted in **Preferences > Cues > Beeps**. Optional visual countdown

provides a 3, 2, 1, Go count on the output display as well as a visual countup 1, 2 3 Go count.

Visual Streamers

Traditional visual streamer (also called a wipe) that shows 2 vertical bands superimposed over the picture. The two bars start at either side of the screen and the voice talent starts when the left hand bar hits the right hand target bar. Streamers are color coded by character.

The width, height, position, color, and duration can be adjusted in **Preferences > Cues > Streamers**.

Preview Lines

Similar to subtitles VoiceQ will display a preview of the dialogue onscreen. You have control over when the next line will appear and how it will be presented to the Actor or Voice Talent.

The width, height, position, color, size, transparency, with/without character name and frequency can be adjusted in **Preferences > Display > Preview Text**.

Scrolling Ruler





Scrolls a ruler onscreen in feet and half feet. The altitude and size can be adjusted in **Preferences > Display > Scrolling Ruler**

Scrolling Waveform



Scrolls the audio waveform of the movie. The altitude, size and transparency can be adjusted in **Preferences > Display > Scrolling Waveform**. This feature is very useful during preparation as it allows you to see the words and the waveform side by side to ensure exact sync.

Timeline Commands

Adjusting the position of words in the timeline is now greatly improved.

-  Hold down control key to move all words before the selected word while dragging
-  Hold down option key to move all words before and after the selected word while dragging
-  Hold down command key to move all words after the selected word while dragging
-  Cut (⌘X), copy (⌘C) and paste (⌘V) whole lines in the timeline




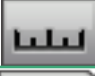
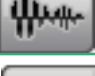




Transport Commands

-  Command plus (⌘+) or minus (⌘-) to locate forward or backward one frame
-  Option command plus (⌥⌘+) or minus (⌥⌘-) to locate forward of backward ten seconds

- Control option command plus (^⌘⌘+) or minus (^⌘⌘-) to locate forward or backward ten seconds
- Hover the pointer over the timeline, hold shift and use the scroll wheel on your mouse to scroll the timeline window left or right
- Control spacebar to play currently selected line with preroll - set preroll time in the **Preferences>General>Movie>Preroll**

Display and Cueing Controls

VoiceQ has a range of display and cueing options:

Feature	Control	Quick Key	Function
Chase External MTC		⌘J	Chase external MIDI timecode. Toggles On and Off
Preview Line		F1	Displays a static preview of the highlighted line onto the display. Toggles: On selected line, On all lines and Off
Show Time-code		F2	Outputs VoiceQ timecode onto the display. Toggles On and Off
Show Scrolling Ruler		F3	Outputs feet and half feet Ruler onto the display. Toggles On and Off
Show Scrolling Waveform		F4	Outputs waveform onto the display. Toggles On and Off
Show Scrolling Text		F5	Outputs VoiceQ scrolling text onto the display. Toggles On and Off
Audible Beep Countdown		F6	Plays audible beep countdown on selected line or all lines. Toggles: On selected line, On all lines and Off
Show Visual Streamer		F7	Outputs visual streamer onto the display. Toggles: On selected line, On all lines and Off
Display on External Monitor		F8	Outputs movie to external monitor. Toggles between internal and external monitor

General Preferences Window

The general preference window allows you to:

- Adjust the scrolling behavior of the timeline view
- Set the Auto save options
- Play/Mute the Movie audio
- Adjust the Preroll value
- Set the MIDI Machine Control of ProTools

Display Preferences Window


- The display preferences window allows you to:
- Display the movie on an internal or external monitor
- Set the size of the QuickTime Movie Preview Window
- Sets the display latency compensation in milliseconds. Use this to compensate for latency introduced in the display chain by devices such as LCD, Plasma displays or Projectors.
- Apply a picture mask to the movie output window to cover often erroneous and distracting onscreen data
- Display a preview of the line and customize appearance and position. Similar to subtitle behavior.
- Apply a Screen Mask over the movie output window until cued. This is often used to cue the Actor on specific lines (common in Germany)
- Display the timecode and adjust the altitude and horizontal positions
- Display the ruler in feet and half feet and adjust the altitude and size
- Display the waveform and adjust the altitude, size, and color transparency

Cues Preferences Window

- The cues preferences window allows you to:
- Display the scrolling text and adjust the font, text color, scroll speed, trigger position, trigger width, trigger color, bar transparency and size
- Play audible beeps on a highlighted line or all lines and adjust the volume, frequency, duration, timing and visual countdown
- Display streamers on a highlighted line or all lines and adjust the altitude, width, height, duration and the color of the streamer bar
- Set the MIDI/GPI event information that will trigger the MIDI streamer. This allows you to trigger streamer events from an external source

Project Setup Window

- The project setup window allows you to:
- Browse and import a QuickTime movie to the project
- Set the frame rate
- Display timecode values as feet and frames
- Apply movie timing compensation to counteract movie file conversion variations
- Set the QuickTime Movie start time (Does not affect timing of the lines)
- Add languages (VoiceQ DUB only)

-  Set the primary language (VoiceQ DUB only)

QuickSpot

A powerful new feature introduced in 1.7 is QuickSpot that provides quick spotting of dialogue lines.

1. Simply select the dialogue line you wish to spot
2. Locate the desired start point for the line in the timeline
3. Press the quick keys (^i) to set the start timecode of the selected line to the current location
4. Located the desired end point for the line and press the quick keys (^o) to capture the current timecode to the selected line's end timecode.
5. Use the slash key (/) to select the next line of dialogue
6. Use the m key (m) to select the previous line.

QuickSpot may be used during playback, allowing you to simply play a scene down and spot each line to its location. You can then “tweak” the timing of the words by grabbing and dragging them to achieve more accurate sync.

Quick Keys Reference Guide

This chapter provides the full list of VoiceQ Quick Keys

Feature	Quick Key	Function
Add line	⌘L	Allows you to manually insert a line at the selected point
Add Scene	⌘=	Allows you to manually insert a scene at the selected point
Advance 1 frame	⌘+	Forward one frame
Advance 1 second	⌘⌘+	Forward one second
Advance 10 seconds	⌘⌘⌘+	Forward ten seconds
Audible Beeps	F6	Play audible beeps countdown on a highlighted line or all lines
Characters Setup...	⌘8	Reveals or hides the Project Characters box either side of the main window
Chase Ext Time-code	⌘J	Enables VoiceQ to chase external MTC. Toggles On and Off
Close	⌘W	Closes the current file but does not quit the program.
Copy	⌘C	Copies highlighted sections of text
Cut	⌘X	Cuts highlighted sections of text
Decrease Scroll Speed	⌘[Decrease the scroll speed
Delete Line	⇧ ⌘L	Deletes a line
Delete Scene	⇧ ⌘Y	Deletes a scene
Drag all words in line	⌘ drag	Dragging a word in the timeline view will affect all words after the one selected in the current line
Drag following words in line	⌘⌘ drag	Dragging a word in the timeline view will affect all words before and after the one selected in the current line
Drag previous words in line	⌘⌘⌘ drag	Dragging a word in the timeline view will affect all words before the one selected in the current line
External Monitor	F8	Outputs movie to internal or external monitor
Go To Timecode	⌘G	Moves playhead to timecode location as entered
High Quality	⌘ 2	Playback QuickTime movie in high quality
Import QuickTime	⇧ ⌘I	Imports QuickTime movie
Increase Scroll Speed	⌘]	Increase the scroll speed

Locate to Start	⌘return	Locates to the start of the movie
New	⌘N	Creates a new VoiceQ Project
Open All Lines	⌘ click	Opens and closes All Lines when Scene is highlighted, including all languages
Open...	⌘O	Opens an existing VoiceQ Project . Also used to imports a text file into VoiceQ.
Paste	⌘V	Inserts cut or copied sections of text
Play QuickTime Audio	⇧ ⌘M	Play QuickTime audio. Toggles On and Off
Play with Pre-roll	^space bar	Plays selected line with a pre-roll value set in preferences
Play/Stop	space bar	Plays and stops movie
Preferences	⌘,	Opens VoiceQ Preferences Window
Preview Line	F1	Displays a static preview of the highlighted line or all lines
Project Setup...	⌘9	Opens Project Settings window
Quickspot line end	^o	Spots the end of a highlighted line to the timeline
Quickspot line start	^i	Spots the start of a highlighted line to the timeline
Redo	⇧ ⌘Z	Redo previous actions
Rewind 1 frame	⌘-	Backward 1 frame
Rewind 1 second	⌘⌘-	Backward 1 second
Rewind 10 seconds	^⌘⌘-	Backward 10 seconds
Save	⌘S	Saves the current file
Save As ...	⇧ ⌘S	Saves a copy of the current file with a new name
Scrolling Ruler	F3	Outputs feet and half feet Ruler onto the display. Toggles On and Off
Scrolling Text	F5	Toggles the text On and Off on the display
Scrolling Waveform	F4	Toggles the scrolling waveform On and Off on the display
Select next line	fwd slash (/)	Selects next line for spotting
Select previous line	m	Selects previous line for spotting
Special Characters	⌘⌘T	Displays the Special Character Palette
Streamers	F7	Toggles the streamers On and Off on the display
Timecode	F2	Outputs VoiceQ timecode onto the display. Toggles On and Off
Undo	⌘Z	Undo previous actions

Support

For all enquiries and technical support contact:

North America Head Office:

KIWA International Ltd

Telephone: 1 800 371 2792

Email General Enquiries: info@voiceq.com

Email Technical Support: support@voiceq.com

Website: voiceq.com

New Zealand and Australasia Head Office:

KIWA International Ltd

PO Box 41136

St Lukes

Auckland

New Zealand

Telephone: +64 9 375 2865

Fax: +64 9 375 2867

Email General Enquiries: info@voiceq.com

Email Technical Support: support@voiceq.com

Website: voiceq.com



David Kite

*Vice President & General Manager, VoiceQ
A Division of KIWA International Ltd
A Member of the KIWA Media Group*