

Smart-X Software Solutions

## **Windows Switcher User guide**

---

## **Table of content:**

### **WELCOME**

---

**FEATURES AND CAPABILITIES**  
**MORE SYSTEM MANAGEMENT TOOLS**

### **REQUIREMENTS**

---

### **LICENSING AND INSTALLATION**

---

**EVALUATION VERSION LIMITATION.**  
**INSTALLATION**  
**LICENSING**

### **USING WINDOWS SWITCHER**

---

**TOOL BAR**  
**SWITCHING WINDOWS**  
**LOAD CONFIGURATIONS**  
**TASK BAR OPTIONS**

Formatted: Not Highlight

## **Welcome**

Welcome to Smart-X.

Thank you for choosing Windows Switcher™, one of the top tools developed by Smart-X Software Solutions expert team in an effort to optimize your everyday work. Windows Switcher helps you manage your system efficiently, effortlessly and productively.

This chapter describes the features and capabilities of Windows Switcher, and lists additional tools in the same field that can help optimize your work environment.

For more tools, click on the link to visit our website at [www.Smart-X.com](http://www.Smart-X.com).

### **This Chapter Contains:**

- Features and Capabilities.
- More System Management tools.

## Features and Capabilities

Here are just some of the benefits our tool has to offer:

Save space and cut the cost of unnecessary monitors in the Computer Operating Room

Does your computer operator team have several monitoring screens which need to be consistently monitored? Instead of purchasing additional monitors and display adapters, simply install Windows Switcher™ for less than 1% of the cost!

Windows Switcher™ enables you to define a set of windows which will be automatically switched and displayed one after another.

Benefits:

- Save more than 99% for each additional monitoring screen.
- Ideal for computer operating room.
- Money back guarantee.

## More System management tools

### SecReport

Easily generate NTFS permissions reports on your network

SecReport allows you to generate complex NTFS security reports on any given directory. The report will include all users who have access to each sub directory (and optionally files) and the type of access permission.

Benefits:

- Get a clue who can access which data on your public folders
- Generate reports from the context menu.
- Provide annual security reports to managers to comply with SOX standards.
- **30 Days money back guaranty!**

Formatted: Not Highlight

## **Duplicate SID Monitor**

**Monitors your network for duplicate SIDs computers and easily resolves it from your own workstation.**

Using computer images for OS deployment? Technicians forgot to run SYSPREP / NEWSID? You probably have hundreds of duplicate SID computers in your network!

Duplicate SID computers is a major security risk and might cause all kinds of difficulties when working with third party products such as Anti Virus, Deployment systems and other system products.

Duplicate SID Monitor (DSM) is a revolutionary product which constantly monitors your network to find computers with duplicate SIDs. The information is stored locally and enables administrators to query for duplicate SID computers and resolve it remotely with a single click.

DSM Benefits:

- Easily and quickly repairs malfunctions caused by years of incorrect deployment procedures
- Tightens security and fix one of the most common security threats in enterprise networks.
- Instantly provides a real view of duplicate SID computer on your network.
- Easily distribute new SIDs to remote computers with a single click.
- 30 Days money back guaranty!

## **Working with Windows Switcher**

This chapter provides explicit instructions on how to apply SecRepor

After reading the content carefully and following the prescribed step you will find that SecReport is simple to operate.

### **This Chapter Contains:**

I: Requirements.

II: Installation and Licensing.

III: Using Windows Switcher™

## **Requirements**

Frame Work: dot net frame work 2 SP1.

Operating system: Windows 2003, 2008, XP, vista.  
Windows server 2000.



## Licensing and installation

### Evaluation version limitation.

Formatted: Not Highlight

The product you have downloaded to your pc is an evaluation version. The Windows Switcher™ evaluation version is time limited- (as detailed in the EULA).

### Installation

It is recommended to install the program on the station on which you need to display multiple screens.

To install Windows Switcher from a downloaded file:

1. Double click the setup.exe file.
2. Read the program license conditions carefully.
3. Follow the Setup program instructions displayed on the screen until you complete the installation.

A desktop icon of the Windows Switcher will be placed on the desktop and in the start menu.

## Licensing

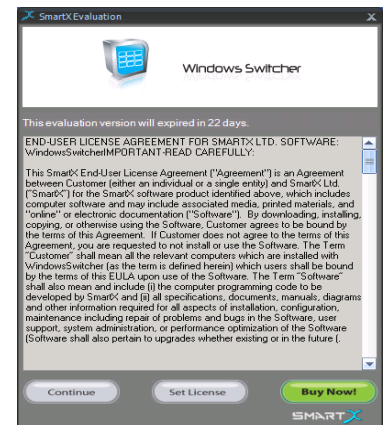
Windows Switcher™ is licensed per workstation.

Once the application is launched, you will see a license window from which you can either open the program or add the license file.

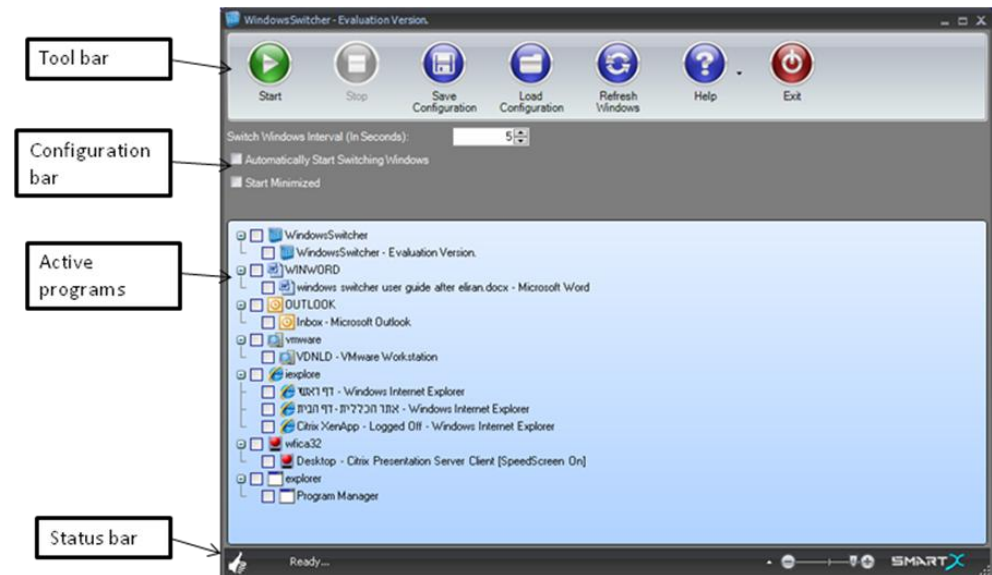
- For the continuing using the unregistered version of the application click '**Continue**'.
- To add the purchased product's certificate file click '**Set License**'.

Browse to choose the license file, and complete the process.

- The '**Buy Now**' button will open the product page at the Smart-X web site.





## Using Windows Switcher



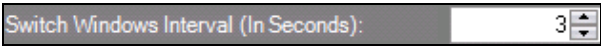
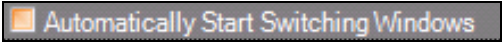

### Tool bar

Icon	Name	Function
	Start	Starts switching the chosen screens
	Stop	Stops the switching process
	Save configurations	Saves configurations
	Load configurations	Loads configurations
	Refresh Windows	Updates Active window display.

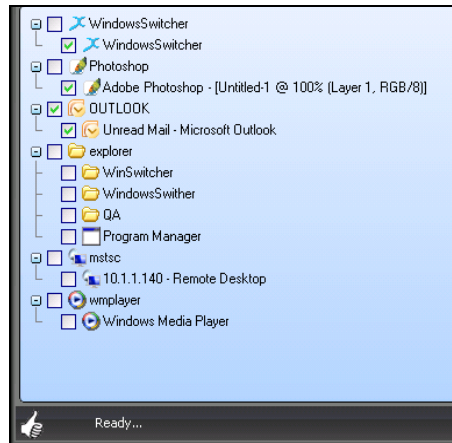
Icon	Name	Function
	Help	Opens sub menu containing: About, Legal info, Check new versions.
	Exit	Exits the program



## Switching windows

### 1. Define the settings parameters:

Parameter	Settings
	Click the upper triangle to increase the switching timer. Click the lower triangle to lower the timer. (minimum 3 seconds)
	Click to operate the switcher automatically when logging on to the station.
	Click to start the program at a minimized state.

2. Choose the windows you want to display by clicking the specific window appearing on the 'Active programs' list.





3. Click on 'Save configurations'  to save your settings.
4. The configuration is saved as an XML file, browse to choose the location for the configuration file and
5. Click on 'Start'  to start the windows switching.


**Note:** The path to the configurations file is saved by the application and will be used by it in every application launch.


## Load configurations




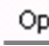
To edit saved configurations simply:

1. Press on the 'load configuration' button .
2. Browse to the saved xml file and click on 'Open'.
3. Change the settings in the console window.
4. To save settings:
  - Click on 'save configuration' .
  - Click on the existing xml file in the browse window and then click on 'Save'

## Task bar options

- After you run the Windows Switcher™ program, an icon will be placed in the notification area. 
- A right click on the Windows Switcher icon will open a menu.
- Click on the desired option to:

Icon	Name	Function
 Exit	Exit	Removes the icon from the notification area and closes the

		application
 Stop  Start	Stop / Start	Stops/ starts switching windows
 Refresh	Refresh	Refreshes the console to display only active programs
 Options	Options	Opens the Windows Switcher console to change settings.